

GOVERNMENT CORNER RESTORATION FORM

FILED

TOWNSHIP 22 S RANGE 05W SEC. 32 PLSS # 240100

Date: 10/30/2013 By: Jc

This survey consists of:

DOUGLAS COUNTY OREGON

DATE SEPT 30, 2013

Map: _____

Narrative: _____

Corner Rpt: CS 67/40-12

Corner Designation

DOUGLAS COUNTY
SURVEYOR

1/4 S 32
ONLY

- ___ Condition Report
- ___ Not Found
- Renewed
- ___ Unrecorded
- ___ Surveyed In
- ___ Referenced Out

Previous Renewals 1960, 1982-84 BLM RESURVEY
Monument(s) Found: (Condition and Source)

MONUMENT DETAIL

FROM THE 1960 RENEWAL A 1" X 1" X 3/8" T-IRON
NOW A 1 X 1 INCH HAINE "T" IRON (MISSING BRASS
I.D. WASHER) IS FIRMLY PROTRUDING 4 INCHES
ABOVE GROUND.

N/A

Accessories Found

NO CLEAR EVIDENCE REMAINS OF O.B.T'S OR THEIR STUMPS; AREA WAS LOGGED
AND BURNED.

NO CLEAR EVIDENCE REMAINS OF 1982-84 BLM BEARING TREES (SEE ABOVE)

TWO STUMPS WITH APPARENT HEALED DOUBLE BLAZES FACING THE CORNER
MONUMENT. BLAZES ARE OPENED BUT NO SCRIBING IS FOUND. FACES APPEAR
TO HAVE NEVER BEEN MARKED. NO RECORD IS FOUND FOR ORIGIN.

(THESE 2 STUMPS WILL BECOME NEW ACCESSORIES; SEE THERE FOR BEARING AND DISTANCE)

C.S. File 67/40-12

RENEWAL

Monument Set (Procedure and Description)

MONUMENT DETAIL

N/A

N/A

New Accessories

THE TWO, PREVIOUSLY NOTED, FOUND BLAZED STUMPS OF UNKNOWN ORIGIN:
A 13 INCH DIAM, 3 FOOT TALL DOUGLAS FIR STUMP WITH A PARTIALLY OPENED DOUBLE BLAZE;
BEARS N 37 1/2 ° E, 13 1/4 FEET DISTANT.

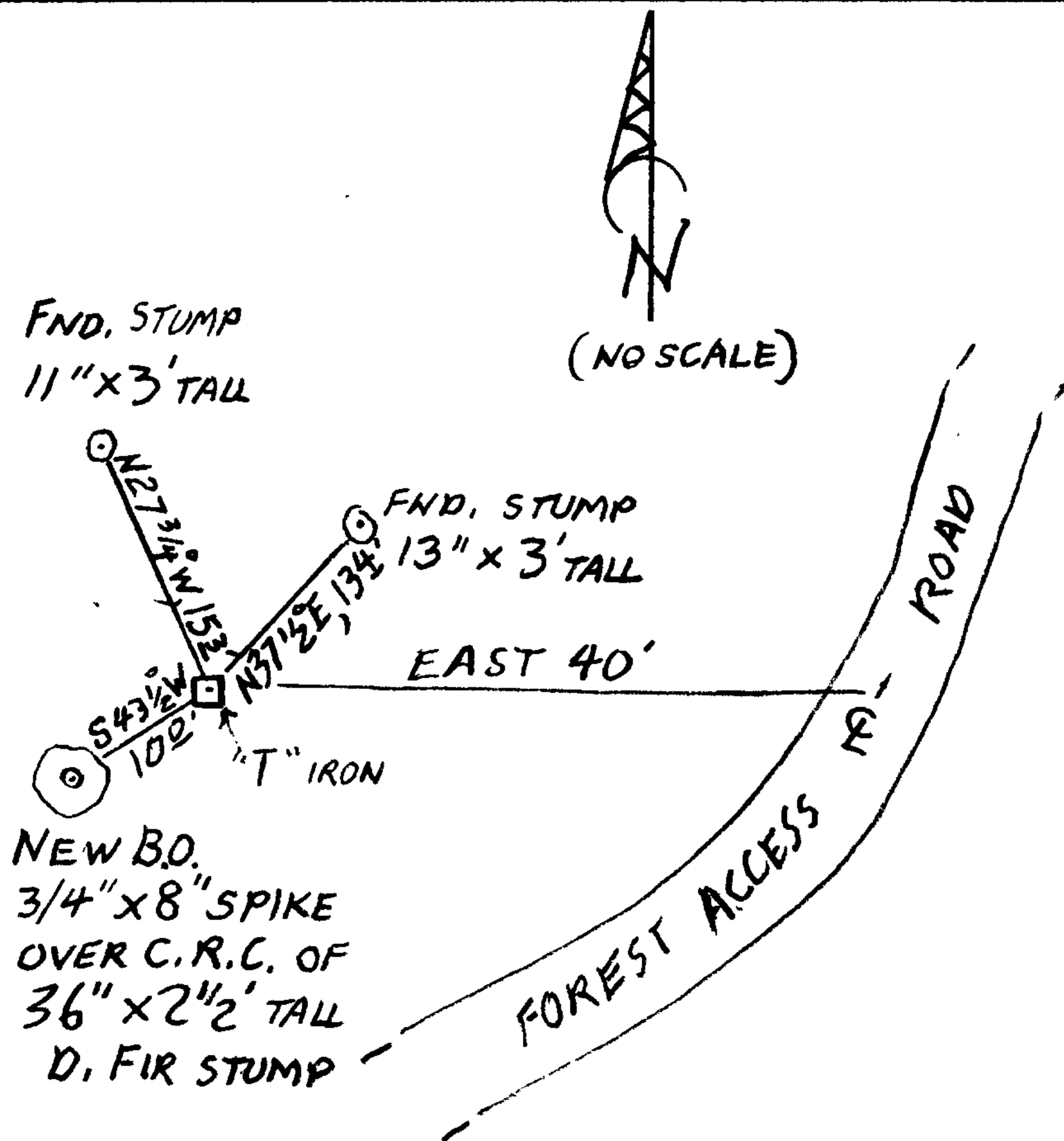
AN 11 INCH DIAM, 3 FOOT TALL DOUGLAS FIR STUMP WITH A PARTIALLY OPENED DOUBLE BLAZE;
BEARS N 27 3/4 ° W, 15 1/2 FEET DISTANT.

AN 8 INCH LONG GALVANIZED IRON SPIKE, 3/4 OF AN INCH IN DIAM. AT ITS TOP IS
DRIVEN INTO THE TOP OF, AND PLUMB OVER THE C.R.C. OF, A 36 INCH DIAM 2 1/2 FOOT TALL
DOUGLAS FIR STUMP WHICH BEARS S 43 1/2 ° W, 10 ° FEET DISTANT.

A GREEN AND WHITE METAL FENCE POST PROTRUDING 3 FEET ABOVE GROUND; BEARS N 15 ° E, 1 FOOT DISTANT.
ALL LIVE TREES IN AREA ARE TOO SMALL TO MARK.

Sketch of Monument, Accessories, and General Area

Location & Comments



MONUMENT IS ON STEEP NW
SLOPE JUST OFF THE TOP OF A HIGH
NE RUNNING RIDGE IN YOUNG
FIR REPROD WITH OLD FIR
FOREST ON SE SIDE OF RIDGE.

Comp. Decline. 15 1/2 ° E
Agency R.C.S.O.
Party Chief STEPHEN JOHN FLAUSE
Note keeper Stephen John Flause
Witnesses MIKE S. KOCH

Surveyor's Seal

REGISTERED
PROFESSIONAL
LAND SURVEYOR

Stephan W. Smith

OREGON
JULY 25, 1990
RANDALL W. SMITH
2408

Renewal 6-30-14