

GOVERNMENT CORNER RESTORATION FORM

FILED

TOWNSHIP 32S RANGE 07W SEC. 7 PLSS # _____

Date: 10-16-2013 By: Jc

This survey consists of: _____

DOUGLAS COUNTY OREGON

DATE SEPT. 27, 2013

Map: _____

Narrative: _____

Corner Rpt: CS 67/40-11

Corner Designation

DOUGLAS COUNTY
SURVEYOR

WC			
T32S			
R	S12	S7	R
8			7
W	S13	S18	W

- Condition Report
- Not Found
- Renewed
- Unrecorded
- Surveyed In
- Referenced Out

Previous Renewals 1883, 1973
Monument(s) Found: (Condition and Source)

MONUMENT DETAIL

U.S. DEPT. OF INTERIOR

WC

T32S

R8W R7W

S12 | S7

S13 | S18

1973

BUR. OF LAND MANAGEMENT

1973 WITNESS CORNER MONUMENT:
A 3 1/4 INCH DIAMETER BRASS CAP (MARKED AS AT RIGHT)
ON A 2 INCH I.D. IRON PIPE SET PLUMB, WITH TOP OF
BRASS CAP JUST BELOW GROUND SURFACE.

Accessories Found

THE TWO 1973 BEARING TREES:
A FIR 5" DIA. NOW A 10 INCH DIAMETER DOUGLAS FIR WITH A FULLY HEALED HIGH-LOW BLAZE; BEARS
S11°E, 34.2 FEET DISTANT (AS PER RECORD).
A FIR 7" DIA. NOW A 14 INCH DIA. DOUGLAS FIR WITH A FULLY HEALED HIGH-LOW BLAZE; BEARS
S52 3/4°W, 12.5 FEET DISTANT (AS PER RECORD).

C.S. File 67/40-11

Monument Set (Procedure and Description)

MONUMENT DETAIL

N/A

N/A

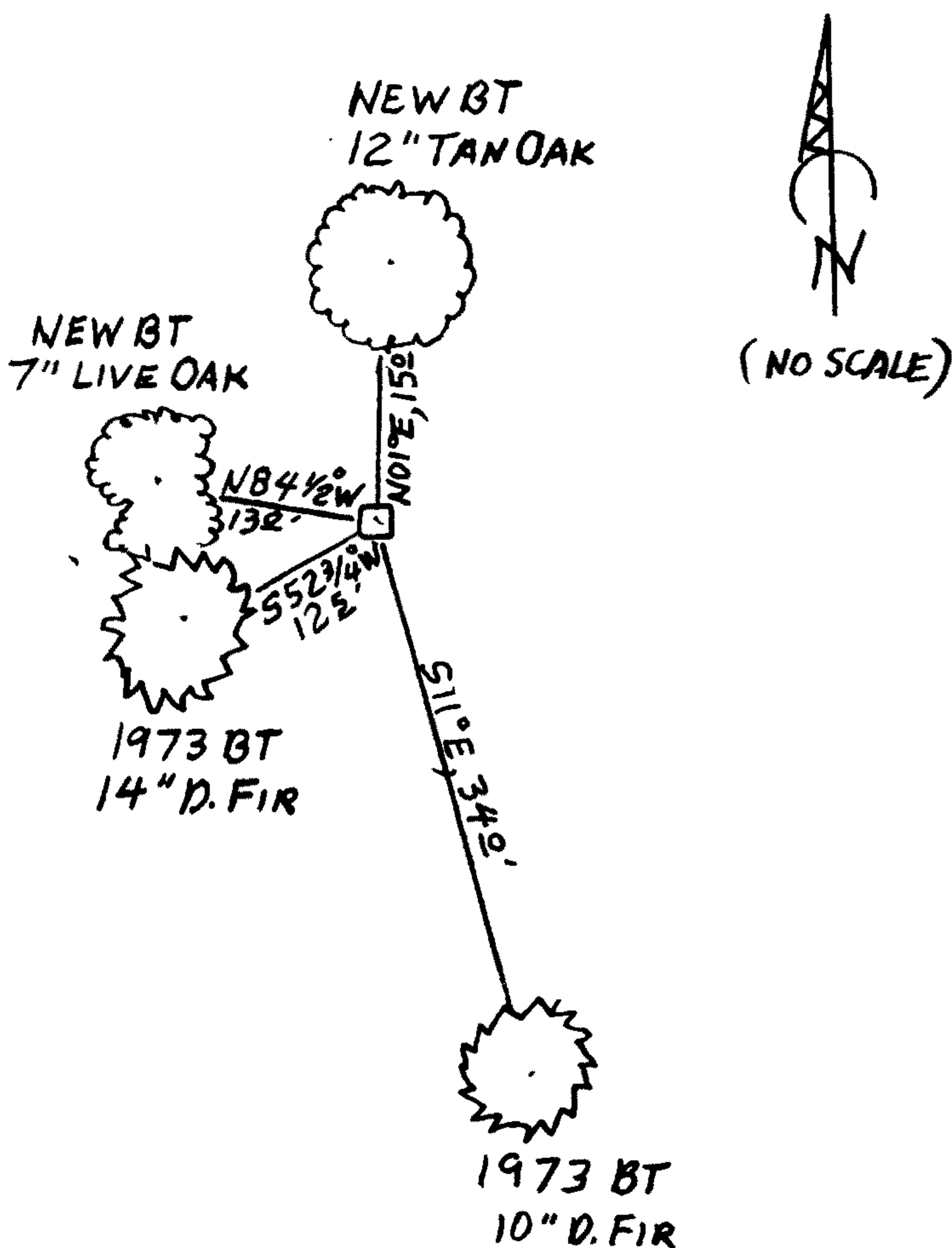
New Accessories

A 12 INCH DIAM. TAN OAK SCRIBED "WCS18CS" "BT" ON A DOUBLE BLAZE; BEARS N01°E, 15° FEET DISTANT

A DOUBLE TRUNK LIVE OAK, THE NORTHEASTERLY 7 INCH DIAMETER TRUNK OF WHICH IS SCRIBED "X" "CSBT" ON A HIGH-LOW BLAZE. THE TWO TRUNKS APPEAR TO BE SEPERATE TREES 3 FEET APPART BUT GROW FROM A COMMON ROOT CROWN. THE CENTER OF THE ROOT CROWN BEARS N84 1/2° W, 13° FEET DISTANT.

Sketch of Monument, Accessories, and General Area

Location & Comments



MONUMENT IS ON STEEP EAST SLOPE IN MIXED FOREST OF FIR, OAK AND MADRONE WITH UNDERSTORY SMALL TREES AND SHRUBS BURNED AWAY IN RECENT FIRE. MONUMENT IS APPROX. 80 FEET WEST FROM THE CENTERLINE OF COW CREEK ROAD. MONUMENT IS APPROX. 60 FEET ABOVE ROAD ELEVATION,

Comp. Decline. 15 1/2° E
Agency D.C.S.O.
Party Chief STEPHEN JOHN FLAUSE
Note keeper Stephen John Flause
Witnesses MIKE S. KOCH

Surveyor's Seal

REGISTERED PROFESSIONAL LAND SURVEYOR

OREGON JULY 25, 1990 RANDALL W. SMITH 2468

Handwritten signature of Randall W. Smith

Renewal 6-30-2014