

GOVERNMENT CORNER RESTORATION FORM

FILED

TOWNSHIP 30S RANGE 06W SEC. 13 PLSS # 700440

Date: 10-16-2013 By: JC
This survey consists of:

DOUGLAS COUNTY OREGON

DATE SEPT 19, 2013

Map: _____

Corner Designation

Narrative: _____
Corner Rpt: CS 67/40-8

R6W R5W

DOUGLAS COUNTY
SURVEYOR

1/4S13 |
ONLY

Previous Renewals 1946
Monument(s) Found: (Condition and Source)

- Condition Report
- Not Found
- Renewed
- Unrecorded
- Surveyed In
- Referenced Out

THE 1946 CORNER MONUMENT:
A 3/4" IRON PIPE NOW A 3/4 INCH I.D. IRON PIPE SET
P.LUMB PROTRUDING 3 INCHES ABOVE GROUND.

N/A

MONUMENT DETAIL

Accessories Found

POSSIBLE EVIDENCE OF ONE O.B.T.
A B. OAK 18 INCH DIA. NOW A SHALLOW ROOT-HOLE DEPRESSION; BEARS S 48° W, 59± FEET (M/L)
AS PER RECORD.

TWO 1946 BEARING TREES:
A 26" B. OAK NOW A 36 INCH DIAM. BLACK OAK WITH A FULLY HEALED SINGLE BLAZE; BEARS N 14 1/4° E,
229 FEET DISTANT (AS PER RECORD).
A 23" W. OAK NOW A 27 INCH DIAM. WHITE OAK WITH A PARTLY HEALED SINGLE BLAZE (BEES INSIDE
LD NOT CHECK FOR SCRIBING); BEARS S 88 1/4° W, 118° FEET DISTANT (RECORD S 88° 20' W, 116± FT.).

Monument Set (Procedure and Description)

MONUMENT DETAIL

N/A

N/A

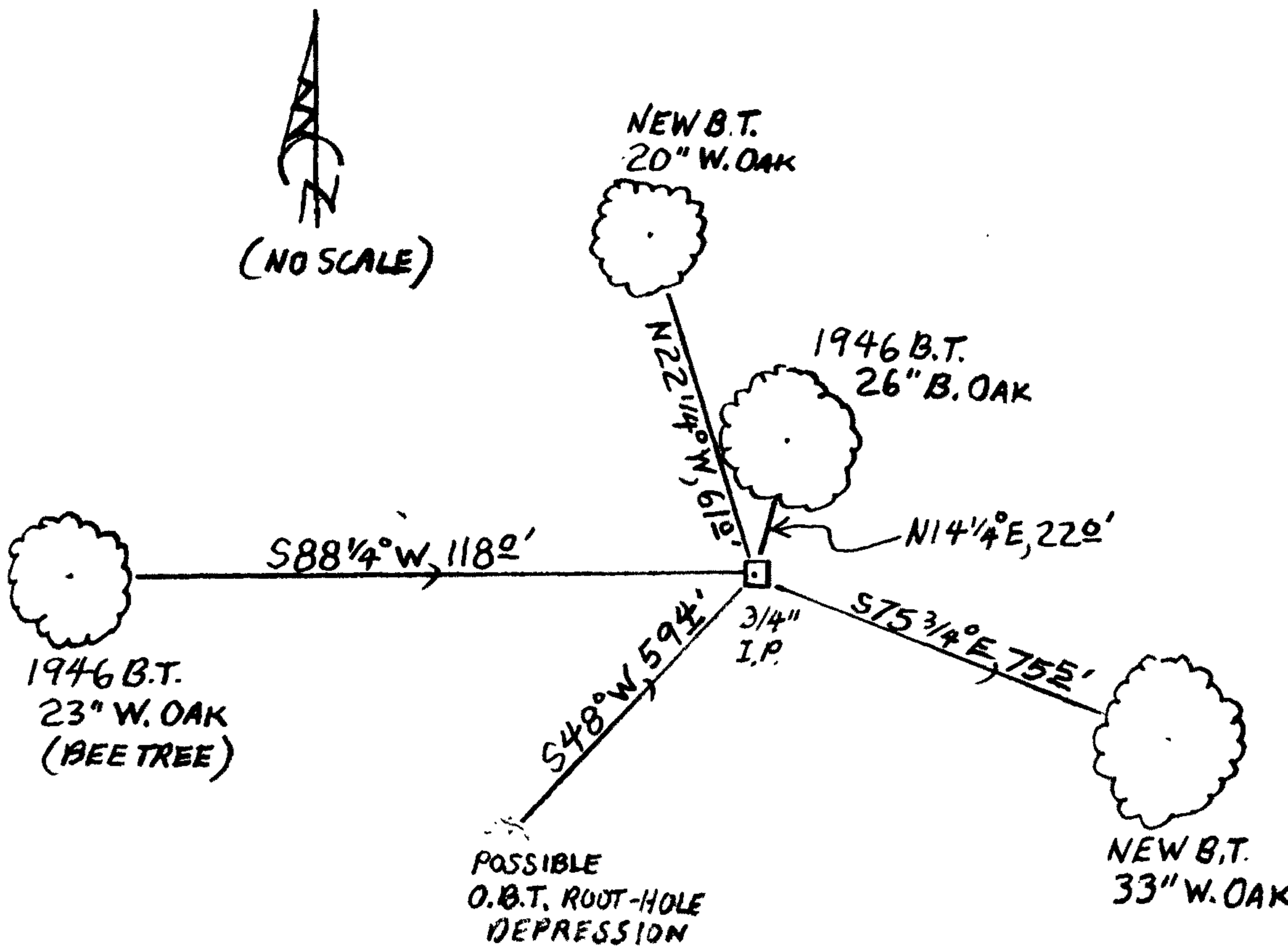
New Accessories

A 33 INCH DIAM. WHITE OAK SCRIBED "1/4 S13" "CSBT" ON A DOUBLE BLAZE; BEARS S75 3/4° E, 75 1/2 FEET DISTANT.

A 20 INCH DIAM. WHITE OAK SCRIBED "1/4 S13 CS" "BT" ON A DOUBLE BLAZE; BEARS N22 1/4° W, 61° FEET DISTANT.

Sketch of Monument, Accessories, and General Area

Location & Comments



MONUMENT IS ON TOP OF HIGH RIDGE IN OPEN PASTURE LAND WITH SCATTERED OAK AND MADRONE.

Comp. Decline. 15 1/2° E
Agency D.C.S.O.
Party Chief STEPHEN JOHN FLAUSE
Note keeper Stephen John Flause
Witnesses MIKE S. KOCH

Surveyor's Seal

REGISTERED PROFESSIONAL LAND SURVEYOR

Randall W. Smith

OREGON
JULY 25, 1990
RANDALL W. SMITH
2469

RENEWAL 6-30-2014