

GOVERNMENT CORNER RESTORATION FORM

FILED

TOWNSHIP 30S RANGE 06W SEC. 23 PLSS # 04502D

Date: 9/23/2013 By: J
This survey consists of:

DOUGLAS COUNTY OREGON

DATE SEPT. 13, 2013

Map: _____

Corner Designation

Narrative: _____

Corner Rpt: CS 67/40-6

DOUGLAS COUNTY
SURVEYOR

NW
DLC 45

- _____ Condition Report
- _____ Not Found
- Renewed
- _____ Unrecorded
- _____ Surveyed In
- _____ Referenced Out

Previous Renewals 1939
Monument(s) Found: _____ (Condition and Source)

MONUMENT DETAIL

IN THE EDGE OF A ROOT-CROWN OF AN OAK (SEE ACCESSORIES FOUND) A 3/4 INCH I.D. IRON PIPE SET PROTRUDING 3 INCHES ABOVE GROUND AND LEANING SLIGHTLY NE.

N/A

Accessories Found

NO EVIDENCE REMAINS OF O.B.T.'S (SEE 1939 RENEWAL)

TWO 1939 BEARING TREES.

A W. OAK 14" DIA. NOW A 27 INCH DIAMETER WHITE OAK WITH A FULLY HEALED SINGLE BLAZE; BEARS S86°E, 26^B FEET DISTANT (RECORD S86°E, 26^B FT. IS A GOOD FACE MEASUREMENT).

A B. OAK 14" DIA. NOW A 35 INCH DIAM. BLACK OAK WITH A FULLY HEALED SINGLE BLAZE BEARS S28^B1/2°E, 60^B FEET DISTANT (RECORD S27^B1/2°E, 59^B FEET; DISTANCE IS A GOOD FACE MEASUREMENT).

AND THE 8" B. OAK WHICH THE 1939 MONUMENT WAS DESCRIBED AS "AT OR UNDER" IS NOW A 22 INCH DIAM. BLACK OAK WITH NO VISIBLE BLAZE OR SCRIBE EVIDENCE, THE C. R. C. OF WHICH IS NOW S80°W, 1^B FEET DISTANT.

RENEWAL

Monument Set (Procedure and Description)

MONUMENT DETAIL

N/A

N/A

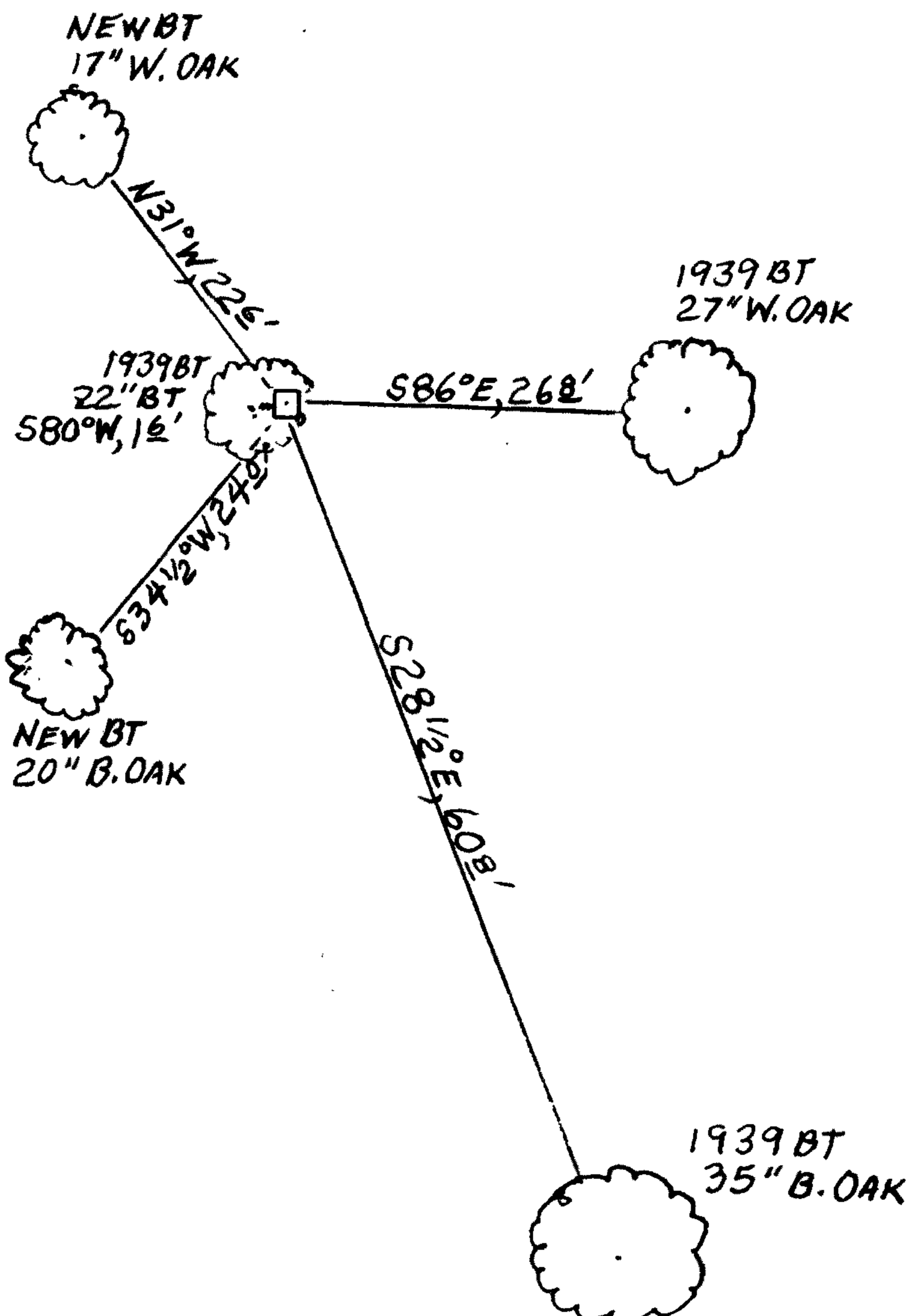
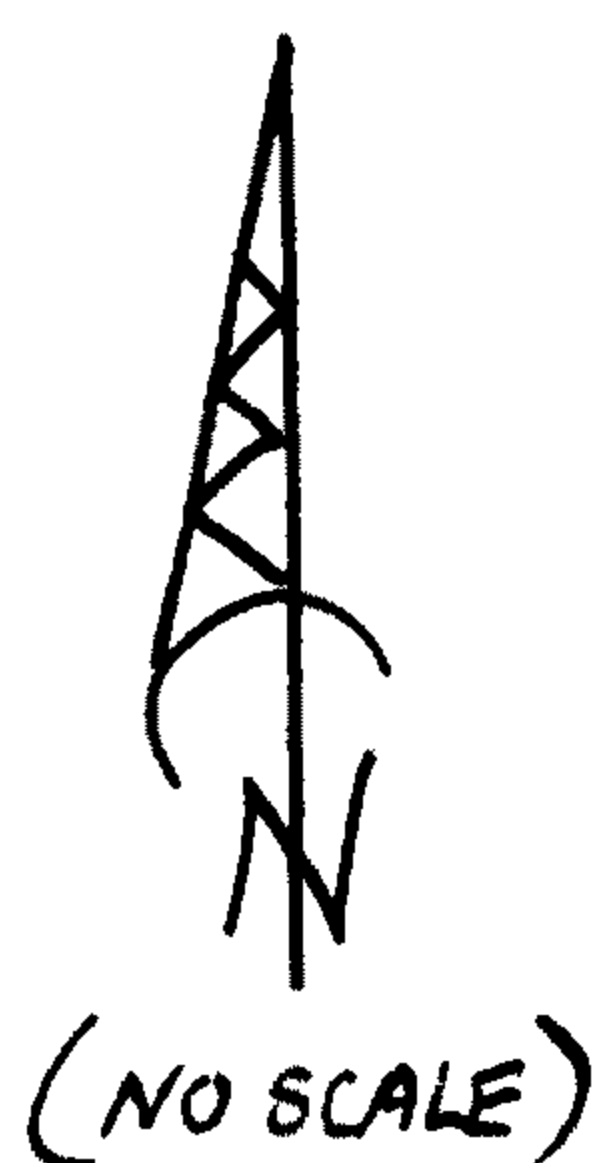
New Accessories

A 20 INCH DIAM. BLACK OAK SCRIBED "NW DLC 45" "CS BT" ON A DOUBLE BLAZE; BEARS S 34 1/2 ° W, 24 ° FEET DISTANT (TO MAIN C.A.E. BUT ONE LARGE ROOT EXTENDS TOWARD CORNER).

A 17 INCH DIAM. WHITE OAK SCRIBED "NW DLC 45 CS" "BT" ON A DOUBLE BLAZE; BEARS N 31 ° W, 22 ° FEET DISTANT.

Sketch of Monument, Accessories, and General Area

Location & Comments



MONUMENT IS IN WESTERLY CUT-BANK OF DIRT ROAD (OLD NICKEL MINE ROAD) ON WEST SIDE OF A SMALL DRAW RUNNING SOUTHEASTERLY. MONUMENT IS IN OPEN OAK WOODLAND.

Comp. Decline. 15 1/2 ° E
Agency D. C. S. O.
Party Chief STEPHEN JOHN FLAUSE
Note keeper Stephen John Flause
Witnesses MIKE S. KOCH

Surveyor's Seal

REGISTERED PROFESSIONAL LAND SURVEYOR

Randall W. Smith

OREGON
JULY 25, 1990
RANDALL W. SMITH
2488

Renewed 6-30-2019