

GOVERNMENT CORNER RESTORATION FORM

FILED

TOWNSHIP 29S RANGE 05W SEC. 32 PLSS # 300100

Date: 9-18-2013 By: X  
This survey consists of:

DOUGLAS COUNTY OREGON

DATE AUG. 23, 2013

Map: \_\_\_\_\_

Narrative: \_\_\_\_\_

Corner Rpt: CS 67/38-55

Corner Designation

DOUGLAS COUNTY SURVEYOR

T29S  
S32 | S33  
S04 | S05 R5W

- \_\_\_\_\_ Condition Report
- \_\_\_\_\_ Not Found
- Renewed
- \_\_\_\_\_ Unrecorded
- \_\_\_\_\_ Surveyed In
- \_\_\_\_\_ Referenced Out

T30S

Previous Renewals 1917, 1962  
Monument(s) Found: \_\_\_\_\_ (Condition and Source)

MONUMENT DETAIL

FROM THE 1917 RENEWAL A 3/4" X 24" IRON PIPE NOW A 3/4 INCH I.D. IRON PIPE SET APPROX 14 INCHES UNDERGROUND (AS DESCRIBED).

COUNTY SURVEYORS OFFICE

FROM THE 1962 RENEWAL A 2 1/2 INCH DIAMETER BRASS CAP (MARKED AS AT RIGHT) ON A 1 INCH I.D. IRON PIPE WITH BASE FIRMLY AND PLUMBLY SET BUT WITH TOP 15 INCHES BENT 1+ FEET ~~SW~~ NW FROM PLUMB (ALL MEASUREMENTS FROM THIS MONUMENT ARE FROM FOUND PLUMB BASE OF MONUMENT). THIS MONUMENT CALLED A WITNESS CORNER IN 1962 (ACTUALLY A REFERENCE MONUMENT TO THE SECTION CORNER) BEARS N 89° E, 192.0 (RECORD EAST, 192.0) FROM THE 1917 SECTION CORNER MONUMENT.

T29S R5W

W. C. 192' W. TO

S32 | S33  
S5 | S4

T30S

1962

Accessories Found

AS MEASURED FROM 1917 SECTION CORNER MONUMENT 2°  
EVIDENCE OF ONE O.B.T: AN 8" OAK, NOW A SHALLOW ROOT-HOLE BEARS S 67° E, 204.5 FEET DISTANT (AS PER RECORD).

EVIDENCE OF THE 2 RENEWAL BEARING TREES: A 6" W. OAK NOW A 37 INCH DIAM. WHITE OAK WITH NO VISIBLE BLAZE EVIDENCE; BEARS S 44° E, 216.5 FEET DISTANT (RECORD S 43 1/2° E, 216.5 FEET). A 6" W. OAK NOW A 37 INCH DIAM. WHITE OAK WITH A POSSIBLE SINGLE BLAZE SCAR (FACING I.P. MONUMENT); BEARS N 56° E, 287° FEET DISTANT (AS PER RECORD).

AS MEASURED FROM THE 1962 BC/IP REFERENCE MONUMENT.  
THE CURRENT FLOW-LINE OF A FIELD DRAINAGE DITCH BEARS EAST, 12 FEET (RECORD EAST, 10').  
A NEW B.T- 24" W. OAK NOW A 37 INCH DIAM. WHITE OAK WITH A POSSIBLE DOUBLE BLAZE SCAR (FACING BC/IP MONUMENT); BEARS N 16 1/2° E, 163.5 FEET DISTANT (AS PER RECORD). THIS IS THE SAME TREE AS THE ABOVE NOTED 6" W. OAK NORTHEAST FROM THE SECTION CORNER.

C.S. File CS 67/38-55

RENEWAL

Monument Set (Procedure and Description)

MONUMENT DETAIL

N/A

SECTION CORNER MONUMENT IS LEFT AS FOUND BURIED 14 INCHES BELOW GROUND.

THE PLUMB BASE POSITION OF THE FOUND BC/IP REFERENCE MONUMENT (A.K.A. WITNESS CORNER) IS REFERENCED OUT AND THE MONUMENT IS REMOVED FROM GROUND (PIPE IS 32 INCHES LONG). BC/IP MONUMENT IS STRAIGHTENED (AS MUCH AS POSSIBLE WITH BRASS CAP PLUM TO PIPE BASE) AND RESET IN GROUND AT THE REFERENCED OUT POSITION. THE MONUMENT IS NOW FIRMLY SET PROTRUDING 3 INCHES ABOVE GROUND.

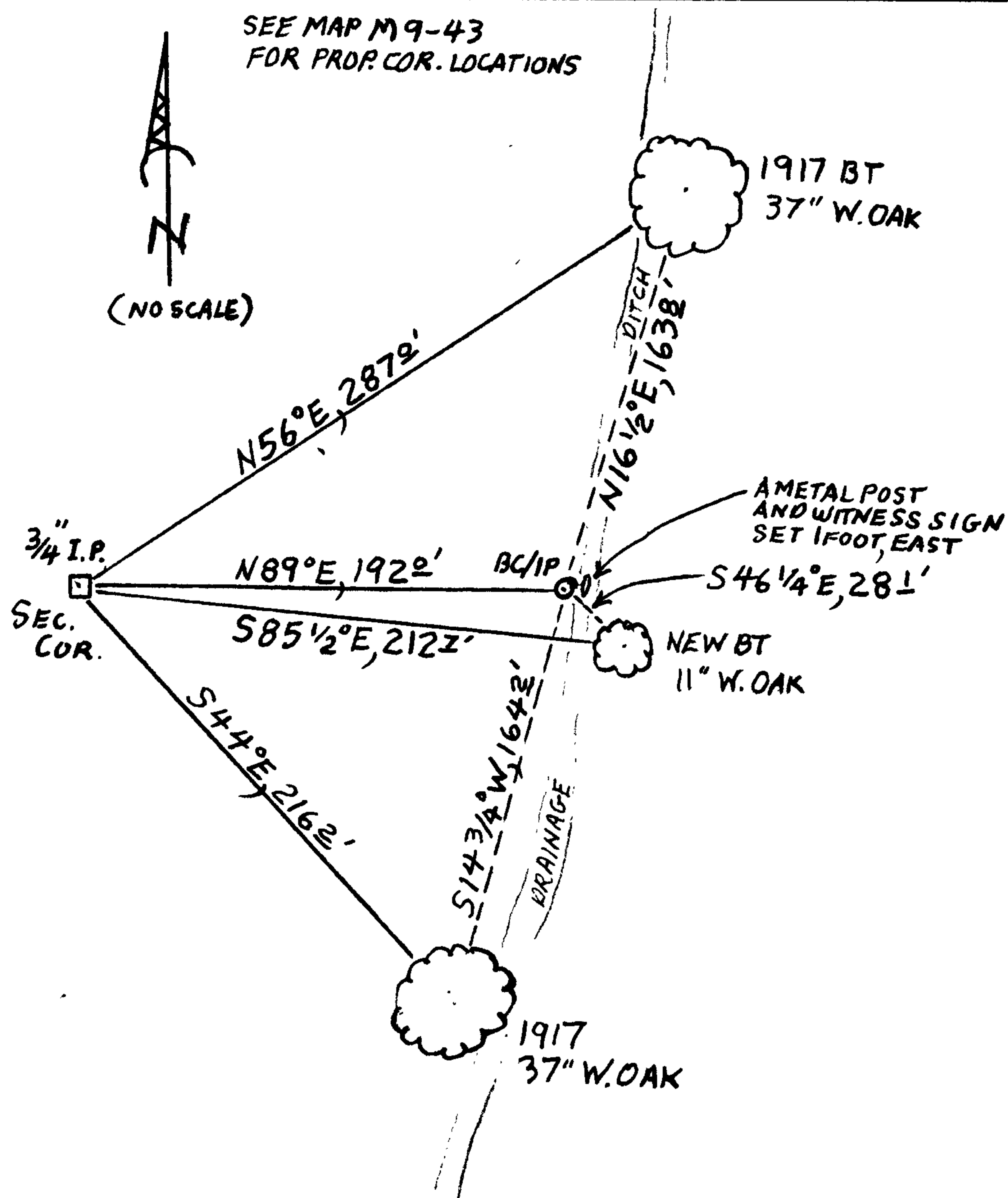
New Accessories

AS MEASURED FROM 1917 SECTION CORNER IRON PIPE MONUMENT: TWO PROPERTY CORNER MONUMENTS FROM A 1947 SURVEY, FILED IN DCSD RECORDS AS MAP M9-43, TIED DIRECTLY TO SECTION CORNER. A 3/4 x 3/4 INCH ANGLE IRON (LENGTH UNKNOWN) WITH TOP SLIGHTLY BENT AND 1/2 INCH BELOW GROUND; BEARS S 89 3/4° E, 181 2 FEET DISTANT (AS PER RECORD). A 3/4 x 3/4 INCH ANGLE IRON SET 3 INCHES BELOW GROUND; BEARS N 89 3/4° W, 259 1/2 FEET DISTANT (AS PER RECORD). ONE NEW BEARING TREE; AN 11 INCH WHITE OAK SCRIBED "T30SR5WS4" "CSBT"; BEARS S 85 1/2° E, 212 2 FEET DISTANT.

AS MEASURED FROM 1962 REFERENCE MONUMENT BC/IP: THREE PROPERTY CORNER MONUMENT FROM SURVEY M9-43. THE ABOVE NOTED SE ANGLE IRON BEARS S 68 3/4° W, 10 8 FEET DISTANT. A 3/4 x 3/4 INCH ANGLE IRON, 5 INCHES BELOW GROUND; BEARS N 12° E, 201 6 FEET DISTANT. A 3/4 x 3/4 INCH ANGLE IRON, 6 INCHES BELOW GROUND; BEARS S 17° W, 212 6 FEET DISTANT. (PROP. COR. RELATE TO SEC. COR. AS DESCRIBED.) NEW 11 INCH W. OAK (DESCRIBED FOR SEC. COR.) BEARS S 46 1/4° E, 28 1/2 FEET DISTANT. THE 37 INCH DIAM WHITE OAK (NOTED AS THE SE 6" W. OAK IN THE 1917 RENEWAL); BEARS S 14 3/4° W, 164 2 FEET DISTANT.

Sketch of Monument, Accessories, and General Area

Location & Comments



SECTION CORNER IS BURIED IN FLAT PASTURE, REFERENCE BC/IP IS IN WEST FACE OF A N/S NORTH-SOUTH RUNNING DRAINAGE DITCH DIKE.

Comp. Decline. 15 1/2° E  
Agency DCSD  
Party Chief STEPHEN JOHN FLAUSE  
Note keeper Stephen John Flause  
Witnesses MIKE S. KOCH

Surveyor's Seal

REGISTERED PROFESSIONAL LAND SURVEYOR

*Randall W. Smith*

OREGON  
JULY 25, 1990  
RANDALL W. SMITH  
2400

Renewal 6-30-2014