

GOVERNMENT CORNER RESTORATION FORM

FILED

TOWNSHIP 30S RANGE 05W SEC. 05 PLSS # 037030

Date: 8/20/2013 By: X  
This survey consists of:

DOUGLAS COUNTY OREGON

DATE AUG 15, 2013

Map: \_\_\_\_\_

Corner Designation

Narrative: \_\_\_\_\_  
Corner Rpt: CS 67/38-54

SW  
DLC 37

DOUGLAS COUNTY  
SURVEYOR

Previous Renewals 1890, 1963  
Monument(s) Found: \_\_\_\_\_ (Condition and Source)

- \_\_\_\_\_ Condition Report
- \_\_\_\_\_ Not Found
- Renewed
- \_\_\_\_\_ Unrecorded
- \_\_\_\_\_ Surveyed In
- \_\_\_\_\_ Referenced Out

A 3/4 INCH I.D. IRON PIPE (OF UNKNOWN ORIGIN)  
IS FIRMLY AND PLUMBLY SET APPROX. 3 INCHES BELOW  
GROUND.

MONUMENT DETAIL

FROM THE 1963 RENEWAL A 2 1/2 INCH DIAM. BRASS  
CAP MARKED (AS AT RIGHT) ON A 1 INCH I.D. IRON  
PIPE PROTRUDING 12 INCHES ABOVE GROUND. THIS  
MONUMENT IS FIRMLY SET BUT LEANING NWLY  
0.5 FEET FROM PLUMB WITH THE B.C. CENTERED  
OVER THE ABOVE NOTED 3/4 INCH IRON PIPE.

COUNTY SURVEYORS OFFICE

T30S

SW  
DLC 37

R5W  
1963

Accessories Found

NO EVIDENCE REMAINS OF O.B.T.

1890 B.T. WAS SEEN BY PROPERTY OWNER AT RECORD LOCATION BUT HAS SINCE  
FALLEN AND BEEN REMOVED, NO EVIDENCE REMAINS.

THE TWO 1963 RENEWAL BEARING TREES REMAIN.  
AN R. FIR (NO SIZE SPECIFIED) NOW A 29 INCH DIAM. DOUGLAS FIR WITH A FULLY HEALED  
DOUBLE BLAZE; BEARS N 88° E, 57.5 FEET DISTANT (AS PER RECORD).  
A 12" MAPLE NOW A 19 INCH DIAM. MAPLE WITH A PARTIALLY HEALED DOUBLE BLAZE (FACES  
NOW ROTTED AWAY); BEARS S 54° E, 4.5 FEET DISTANT (AS PER RECORD). THIS TREE MAY  
BE CUT DOWN SOON.

C.S. File 67/38-54

N/A

N/A

New Accessories

3 NEW BEARING TREES.

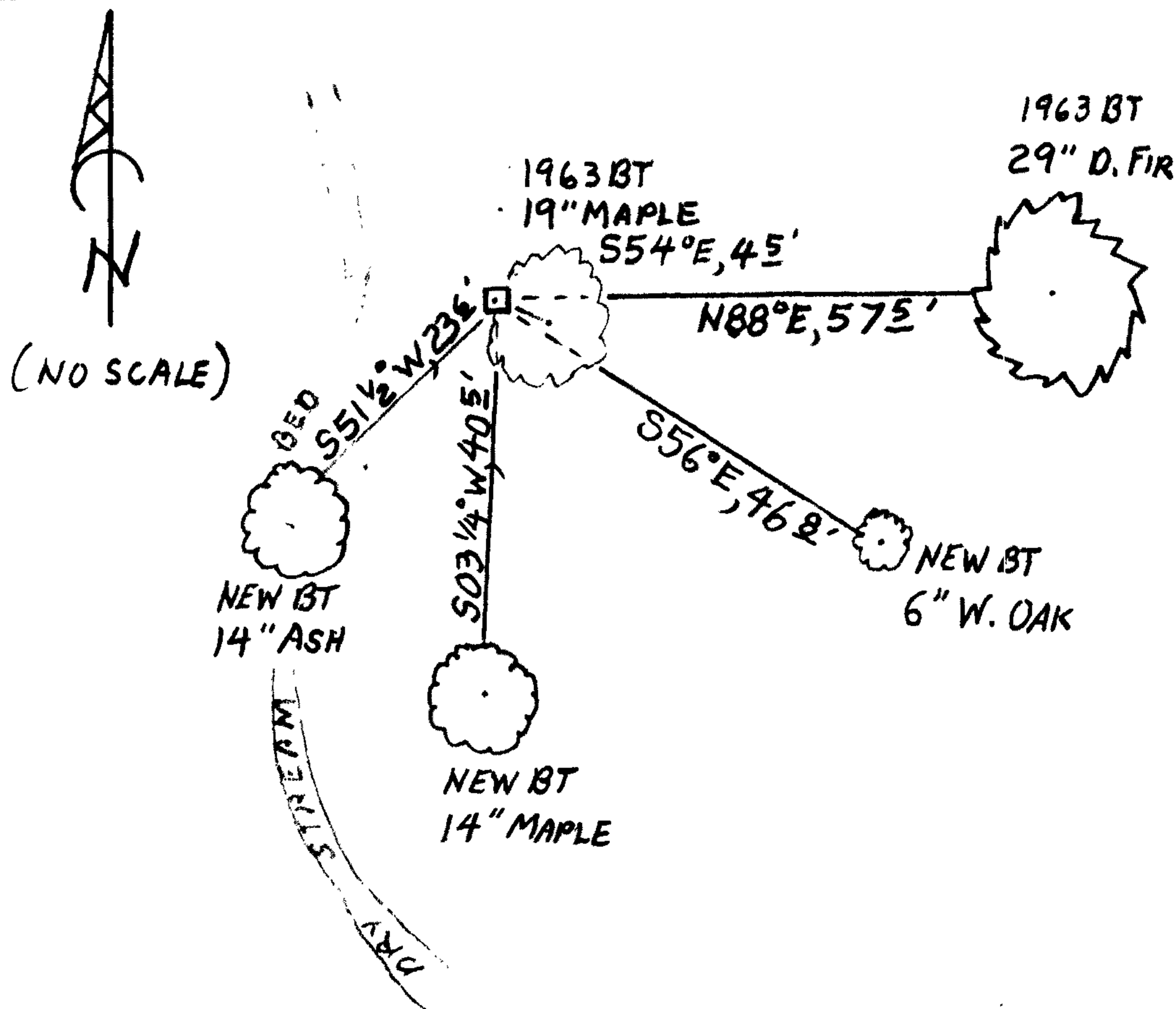
A 6 INCH DIAM. WHITE OAK SCRIBED "X" "CS BT" ON A HIGH-LOW DOUBLE BLAZE; BEARS S56°E, 46<sup>8</sup> FEET DISTANT.

A DOUBLE TRUNK MAPLE MEASURING 14 INCHES IN DIAM. 3 FEET ABOVE GROUND AND SCRIBED "DLC CS BT" ON A LOW SINGLE BLAZE BEARS S03°4'W, 40<sup>5</sup> FEET DISTANT.

A 14 INCH DIAM. ASH SCRIBED "SW DLC 37 CS" "BT" ON A DOUBLE BLAZE; BEARS S51°2'W, 23<sup>6</sup> FEET DISTANT.

Sketch of Monument, Accessories, and General Area

Location & Comments



B.C. MONUMENT ON FLAT FLOODPLAIN OF A SMALL CREEK RUNNING NNW'LY IN AN OPEN WOODS OF PONDEROSA PINE, MAPLE, MARRONE, OAK AND FIR. MONUMENT IS AT A FENCE CORNER WITH A WOODEN FENCE RUNNING APPROX. N17°W AND A WIRE FENCE RUNNING EAST.

Comp. Decline. 15°2'E  
Agency DCSO  
Party Chief STEPHEN JOHN FLAISE  
Note keeper Stephen John Flaish  
Witnesses MIKE S. KOCH

Surveyor's Seal

