

GOVERNMENT CORNER RESTORATION FORM

FILED

TOWNSHIP 30S RANGE 05W SEC. 06 PLSS # 039020

Date: 8/20/2013 By: SC

This survey consists of:

DOUGLAS COUNTY OREGON

DATE AUG 13, 2013

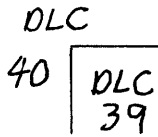
Map: _____

Narrative: _____

Corner Designation

Corner Rpt: CS 67/38-53

DOUGLAS COUNTY SURVEYOR



Previous Renewals 1934
Monument(s) Found: _____ (Condition and Source)

- _____ Condition Report
- _____ Not Found
- Renewed
- _____ Unrecorded
- _____ Surveyed In
- _____ Referenced Out

FROM THE 1934 RENEWAL, A STONE 8x9x15 INCHES IS SET PLUMBLY IN A VERTICAL POSITION APPROX. 15 INCHES BELOW GROUND (VERY OLD N-S RUNNING FENCE WIRE ALSO FOUND AT THIS DEPTH). NO MARKS ARE FOUND ON STONE BUT ITS UPPERMOST SURFACE APPEARS SOMEWHAT SPALLED;

N/A

MONUMENT DETAIL

Accessories Found

NO EVIDENCE REMAINS OF DLC 39 O.B.T. NEAR THE POSITION OF THE DLC 40 O.B.T IS EVIDENCE OF A VERY OLD, LARGE, TREE UPROOT HOLE.

FROM THE 1934 RENEWAL A USGS BENCHMARK WHICH IS A 3 1/4 INCH DIAMETER BRASS CAP, STAMPED "642 B 1903" SET IN THE TOP OF A TRUNCATED PYRAMID SHAPED CONCRETE POST, PROTRUDING APPROX 15 INCHES ABOVE GROUND (SEE DCSO CONTROL MONUMENT RECORDS FOR COMPLETE DESCRIPTION); BEARS N01°E, 135 1/2 FEET DISTANT (RECORD NORTH, 135 1/2 FEET).

RENEWAL

Monument Set (Procedure and Description)

MONUMENT DETAIL

THE TOP CENTER OF THE FOUND STONE MONUMENT IS REFERENCED OUT. THE STONE IS REMOVED FROM THE GROUND AND AT THE REFERENCED POSITION IS PLACED A 2 3/8 INCH DIAM. BRASS CAP (MARKED AS AT RIGHT) ON A 1 INCH I. D. X 32 INCH LONG IRON PIPE. TOP OF B.C. PROTRUDES 1 INCH ABOVE GROUND. THE FOUND 1934 STONE IS PLACED ON THE NORTH EDGE OF THE B.C. MONUMENT WITH ITS TOP JUST BELOW THE GROUND SURFACE.

DOUGLAS COUNTY SURVEYOR

T30S R5W

DLC

40 | DLC
39

2013

New Accessories

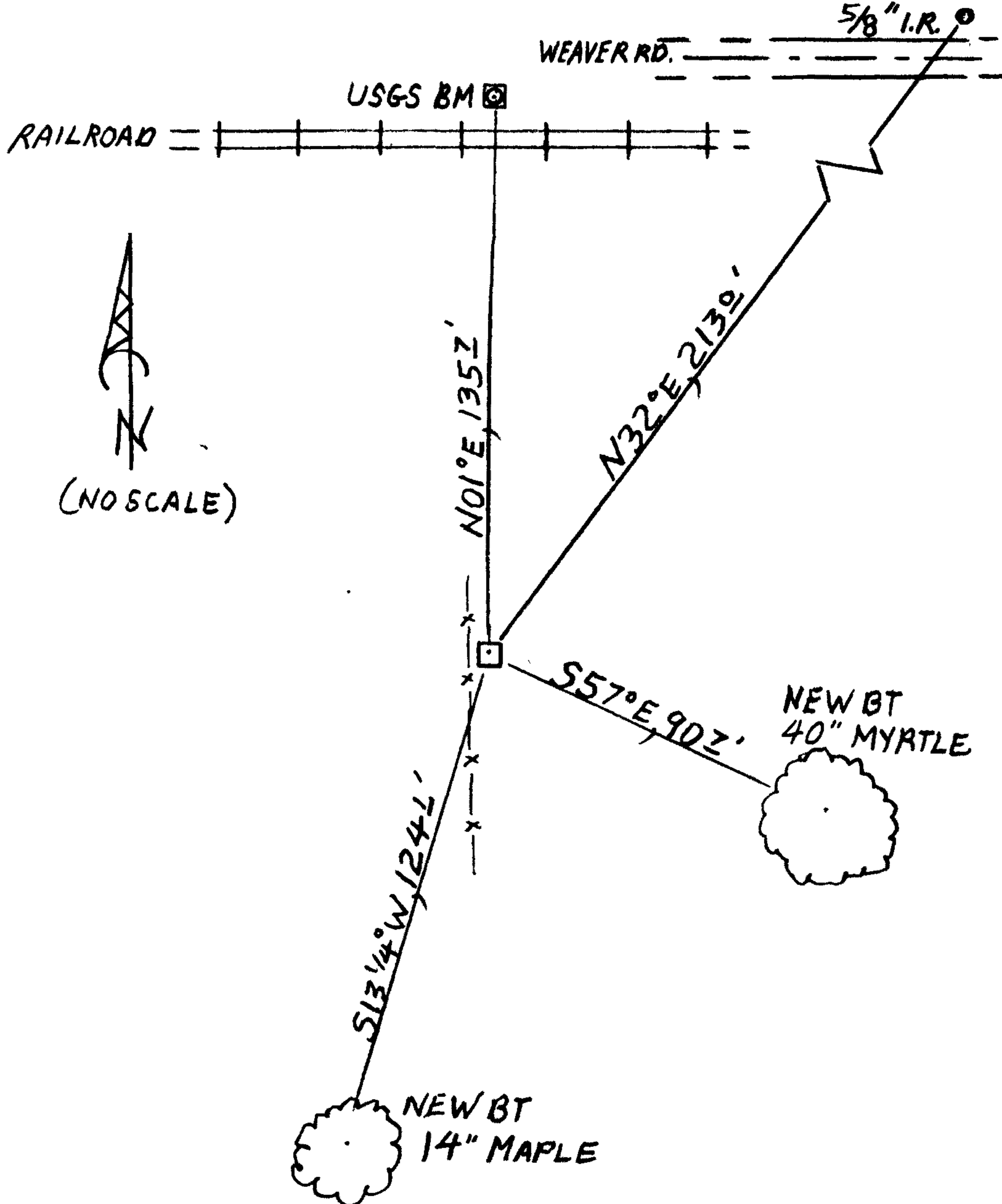
A 5/8 INCH DIAM. IRON ROD PROTRUDING 4 INCHES ABOVE GROUND, DESCRIBED AS THE SOUTH-WEST CORNER OF PARCEL 2 IN A SURVEY FILED IN D.C.S.O. RECORDS AS M 58-14 ; BEARS N 32° E, 213 0 FEET DISTANT.

A 40 INCH DIAM. MYRTLE, NOT SCRIBED OR BLAZED (THIS IS THE ONLY VERY LARGE SINGLE TRUNK MYRTLE IN THE VICINITY OF THE CORNER); BEARS S 57° E, 90 2 FEET DISTANT.

A 14 INCH DIAM. MAPLE SCRIBED "INT. SE. DLC 40CS" "BT" ON A DOUBLE BLAZE; BEARS S 13 1/4° W, 124 1 FEET DISTANT.

Sketch of Monument, Accessories, and General Area

Location & Comments



MONUMENT IS ON M/L FLAT PASTURE-LAND WITH SCATTERED MYRTLE, MAPLE, OAK AND ELDER. MONUMENT IS ~ 1 FOOT EAST OF A BROKEN DOWN N-S RUNNING WIRE FENCE.

Comp. Decline. 15 1/2° E
Agency DC50
Party Chief STEPHEN JOHN FLAUSE
Note keeper Stephen John Flause
Witnesses MIKE S. KOCH

Surveyor's Seal

REGISTERED PROFESSIONAL LAND SURVEYOR

Handwritten signature of Randall W. Smith

OREGON
JULY 25, 1990
RANDALL W. SMITH
2488

RENEWAL 6-30-2014