

GOVERNMENT CORNER RESTORATION FORM

FILED

TOWNSHIP 23S RANGE 05W SEC. 4 PLSS # 300640

Date: 8-20-2013 By: JC

This survey consists of:

DOUGLAS COUNTY OREGON

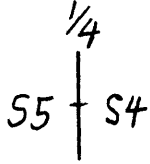
DATE JULY 23, 2013

Map: _____

Narrative: _____

Corner Rpt: CS 67/38-48

Corner Designation



DOUGLAS COUNTY SURVEYOR

Previous Renewals 1885, 1954, 1969, 1982
Monument(s) Found: _____ (Condition and Source)

- Condition Report
- Not Found
- Renewed
- Unrecorded
- Surveyed In
- Referenced Out

1885 STONE GONE

1954 MONUMENT A 3/4" X 2 1/2" X 2.0" IRON BAR AND THE 1969 MONUMENT NOW A 1 INCH I.D. X 32 INCH LONG IRON PIPE MISSING THE BRASS CAP, AND BENT 90° AT ITS MIDDLE, ARE LOOSE ON GROUND SURFACE APPROX. 12 FEET SOUTHWEST OF THE INDICATED CORNER POSITION.

N/A

MONUMENT DETAIL

Accessories Found

SOME ROTTEN OAK ROOT REMNANTS NEAR SOUTHWEST O.B.T. AND 1885 RENEWAL B.T. LOCATIONS BUT NO SOUND EVIDENCE REMAINS.

FROM THE 1969 RENEWAL A 3/4" I. ROD, NOW A 3/4 INCH DIAM. IRON ROD, FIRMLY AND PLUMBLY SET 1 INCH BELOW GROUND; BEARS S 87° 1/2' E, 14 1/2 FEET DISTANT (AGREES WITH 1982 RECORD BEARING AND 1969 RECORD DISTANCE).

FROM THE 1982 BLM RESURVEY THE TWO NEW REFERENCES. AN ASH 16" DIA. NOW A 24 INCH DIAM. ASH WITH A FULLY HEALED SINGLE BLAZE; BEARS N 05° W, 16 1/2 FEET DISTANT (RECORD N 15° E, 16 1/2 FEET).

A REFERENCE MONUMENT NOW A 3 1/4 INCH DIAM. ALUMINUM CAP (MARKED AS BELOW) ON A 2 1/2 INCH DIAM. ALUMINUM PIPE, FIRMLY AND PLUMBLY SET PROTRUDING 3 INCHES ABOVE GROUND;

U.S. DEPARTMENT OF INTERIOR

1/4 S4 RM

1982

CADASTRAL SURVEY
BUR. OF LAND MANAGEMENT

C.S. File 67/38-48

RENEWAL

Monument Set (Procedure and Description)

MONUMENT DETAIL

A POSITION FOR THE B.C. MONUMENT IS DETERMINED USING THE RECORD DISTANCE MEASUREMENTS TO THE FOUND REFERENCES. AT THIS POSITION IS SET A 2 1/2 INCH DIAM. BRASS CAP (MARKED AS AT RIGHT) ON A 1 INCH I. D. 32 INCH LONG IRON PIPE APPROX. 14 INCHES BELOW THE GROUND. THE FOUND IRON BAR FROM THE 1954 RENEWAL IS SET ON THE SOUTH EDGE OF THE B.C. MONUMENT APPROX. 15 INCHES BELOW GROUND.

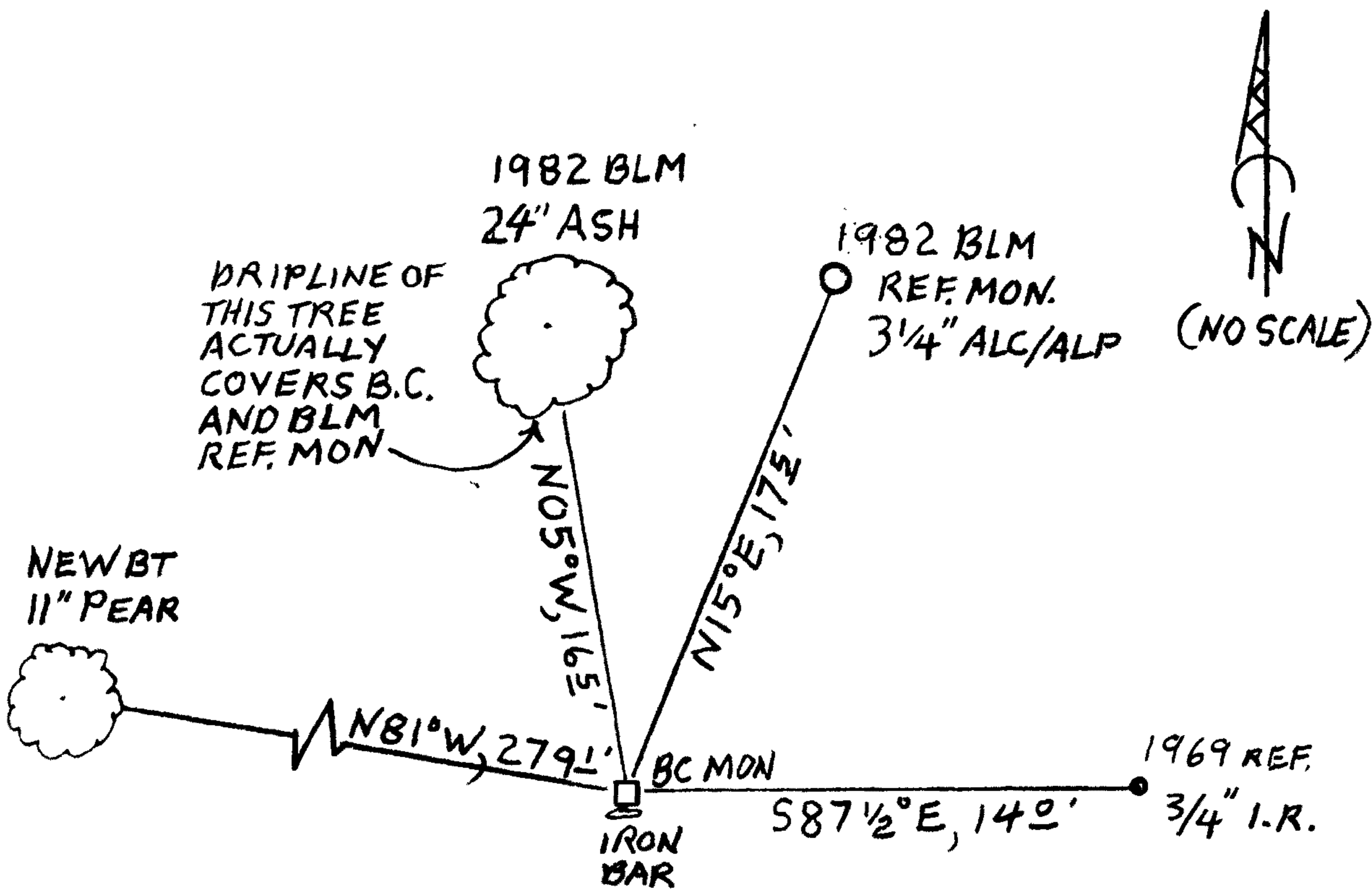
DOUGLAS COUNTY SURVEYOR
T23S R5W
1/4
55 | 54
2013

New Accessories

AN 11 INCH DIAMETER PEAR SCRIBED "CSBT" ON A LOW SINGLE BLAZE; BEARS N81°W, 279' FEET DISTANT

Sketch of Monument, Accessories, and General Area

Location & Comments



MONUMENT IS IN LARGE MOSTLY FLAT COW PASTURE WITH SCATTERED ASH AND FRUIT TREES.

Comp. Decline. 15 1/2° E
Agency D.C.S.D.
Party Chief STEPHEN JOHN FLAUSE
Note keeper Stephen John Flause
Witnesses MIKE S. KOCH

Surveyor's Seal

REGISTERED PROFESSIONAL LAND SURVEYOR

Handwritten signature of Randall W. Smith

OREGON
JULY 25, 1990
RANDALL W. SMITH
2488

Renewed 6-30-2014