

GOVERNMENT CORNER RESTORATION FORM

FILED

TOWNSHIP 22S RANGE 05W SEC. 33 PLSS # 400140

Date: 7/29/2013 By: JC
This survey consists of:

DOUGLAS COUNTY OREGON

DATE JULY 22, 2013

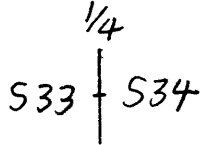
Map: _____

Narrative: _____

Corner Rpt: CS 67/38-45

Corner Designation

DOUGLAS COUNTY
SURVEYOR



- _____ Condition Report
- _____ Not Found
- Renewed
- _____ Unrecorded
- _____ Surveyed In
- _____ Referenced Out

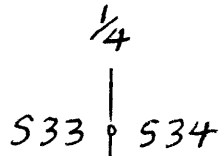
Previous Renewals 1900, 1965, 1982-1984
Monument(s) Found: (Condition and Source)

MONUMENT DETAIL

FROM THE 1982-84 BLM SURVEY, A 3 1/4 INCH DIAMETER ALUMINUM CAP (MARKED AS AT RIGHT) ON A 2 1/2 INCH I.D. ALUMINUM PIPE IS FIRMLY AND PLUMBLY SET PROTRUDING 6 INCHES ABOVE GROUND.

U.S. DEPARTMENT OF INTERIOR
T22S R5W

FROM THE 1965 RENEWAL (ORIGIN UNKNOWN) A METAL PLUGGED 1 1/2 INCH O.D. IRON PIPE IS SET PROTRUDING 2 INCHES ABOVE GROUND A LOW 6 AND 0 1/5 FEET OFF THE SE EDGE OF THE BLM BC 1 P. ABOVE DESCRIBED MONUMENT



1983
CADASTRAL SURVEY
BUR. OF LAND MANAGEMENT

Accessories Found

NO EVIDENCE OF NE ORIGINAL BEARING TREE. POSSIBLE ROOT-HOLE OF SOUTHEAST O. B.T. FOUND NEAR RECORD BEARING AND DISTANCE.

FROM THE 1900 RENEWAL A W. OAK 12" DIA. NOW A 21 INCH DIAMETER WHITE OAK WITH A PREVIOUSLY OPENED BUT NOW COMPLETELY ROTTED AWAY BLAZE; BEARS N 41 1/4° E, 51 5/8 FEET DISTANT (RECORD N 45° E, 49 5/8 FEET, MEAS. DISTANCE AGREES WITH BLM RECORD).

FROM THE 1965 RENEWAL THE ONE NEW B.T. A 15" D. FIR, NOW AN 18 INCH DIAM. 2 FOOT TALL ROTTED DOUGLAS FIR STUMP WITH NO BLAZE OR SCRIBE EVIDENCE FOUND; BEARS S 22° W, 27 1/4 FEET DISTANT (AS PER RECORD).

FROM THE 1982-1984 BLM RENEWAL THE 2 NEW B.T.S. A FIR 9" DIA. NOW A 14 INCH DIAM. DOUGLAS FIR WITH A FULLY HEALED SINGLE BLAZE; BEARS N 66 3/4° E, 13 3/8 FEET DISTANT (RECORD N 65 1/4° E, 13 3/8 FT.) A FIR 6" DIA. NOW AN 18 INCH DIAM. DOUGLAS FIR WITH A FULLY HEALED SINGLE BLAZE; BEARS S 28 1/2° W, 3 3/8 FEET DISTANT (RECORD S 30 1/4° W, 3 3/8 FT.)

C.S. File 67/38-45

Monument Set (Procedure and Description)

MONUMENT DETAIL

N/A

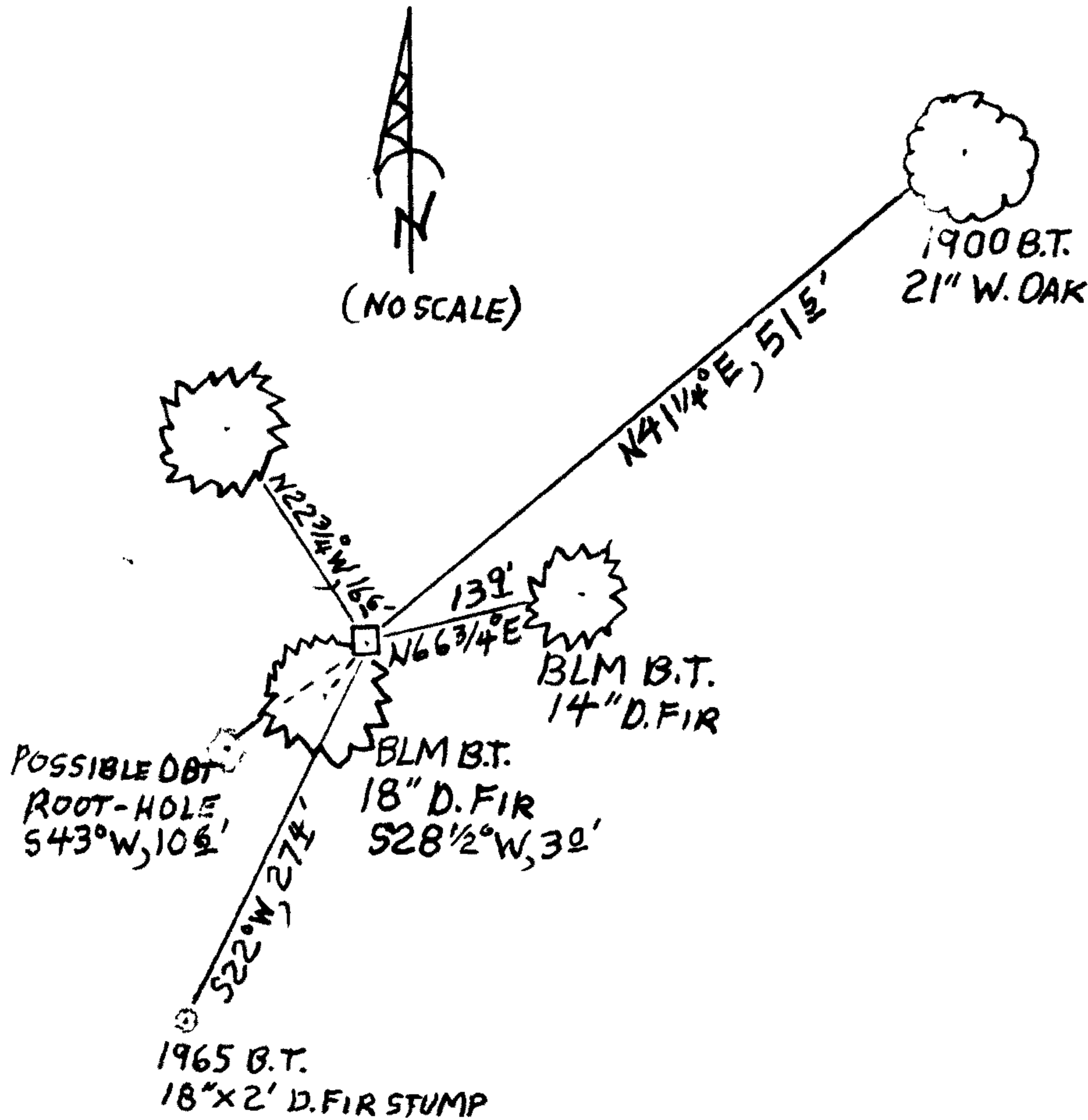
N/A

New Accessories

A 20 INCH DIAMETER DOUGLAS FIR SCRIBED "1/4 533 CS" "BT" ON A DOUBLE BLAZE; BEARS N22 3/4° W, 16 1/2 FEET DISTANT.

Sketch of Monument, Accessories, and General Area

Location & Comments



MONUMENT IS 2 FEET SOUTH OF AN E-W WIRE FENCE ON A BROAD FLAT SHELF IN AN OLD REPROD FIR FOREST WITH SOME MAPLE AND OAK.

Comp. Decline. 15 1/2° E
Agency RCGSO
Party Chief STEPHEN JOHN FLAUSE
Note keeper Stephen John Flause
Witnesses MIKE S. KOCH

Surveyor's Seal

REGISTERED PROFESSIONAL LAND SURVEYOR

Randall W. Smith

OREGON
JULY 25, 1990
RANDALL W. SMITH
2400

RENEWAL 6-30-2014