

GOVERNMENT CORNER RESTORATION FORM

FILED

TOWNSHIP 22 S RANGE 04 W SEC. 17 PLSS # 200440

Date: 6/17/2013 By: JC

This survey consists of:

DOUGLAS COUNTY OREGON

DATE JUNE 14, 2013

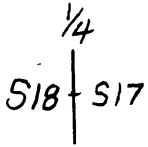
Map: _____

Narrative: _____

Corner Rpt: CS 67/38-31

Corner Designation

DOUGLAS COUNTY SURVEYOR



Previous Renewals THEIL (UNRECORDED), 1957, 1964, 1977
Monument(s) Found: (Condition and Source)

- _____ Condition Report
- _____ Not Found
- Renewed
- _____ Unrecorded
- _____ Surveyed In
- _____ Referenced Out

MONUMENT DETAIL

N/A

FROM THE 1957 RENEWAL A 3/4 INCH I.D. IRON PIPE (FROM UNRECORDED THEIL RENEWAL) IS BENT AND LEANING 0.8 FEET E.N.E. FROM PLUMB WITH ITS TOP APPROX. 3 INCHES BELOW GROUND. THIS MONUMENT'S PLUMB BASE IS ON EAST EDGE OF FOUND 5/8 INCH I.R. (SEE BELOW).

FROM THE 1964 RENEWAL THE BROKEN-OFF FOOT FLANGE OF A BRASS CAP/IRON PIPE MONUMENT IS BURIED APPROX. 15 INCHES BELOW GROUND (NO OTHER PART OF THIS MONUMENT EVIDENT AFTER WIDE SEARCH). THIS MONUMENT IS ON NORTH EDGE OF FOUND 5/8 INCH I.R. (SEE BELOW)

FROM 1977 RENEWAL A 5/8 INCH DIAM. IRON ROD IS FIRMLY AND PLUMBLY SET APPROX. 6 INCHES BELOW GROUND.

Accessories Found

NO EVIDENCE OF ORIGINAL B.T.'S

NO EVIDENCE OF UNRECORDED THEIL B.T.'S NOTED IN 1957 RENEWAL

NO EVIDENCE OF 1957 NEW RENEWAL BEARING TREE.

TWO 1964 RENEWAL BEARING TREES. (BOTH ERRONEOUSLY CALLED B. OAKS)

A 14" B. OAK NOW A 20 INCH DIAM. WHITE OAK WITH A FULLY HEALED DOUBLE BLAZE; BEARS S55°W, 131.8 FEET DISTANT (AS PER RECORD).

AN 8" B. OAK NOW A 14 INCH DIAM. WHITE OAK WITH A FULLY HEALED DOUBLE BLAZE; BEARS S22°E, 138.8 FEET DISTANT (AS PER RECORD).

RENEWAL

Monument Set (Procedure and Description)

MONUMENT DETAIL

MONUMENT IS IN GOOD CONDITION AND B.C. MONUMENT WOULD BE MORE VULNERABLE TO DISTURBANCE AT THIS LOCATION. WE LEAVE 5/8 I.R. AS FOUND.

N/A

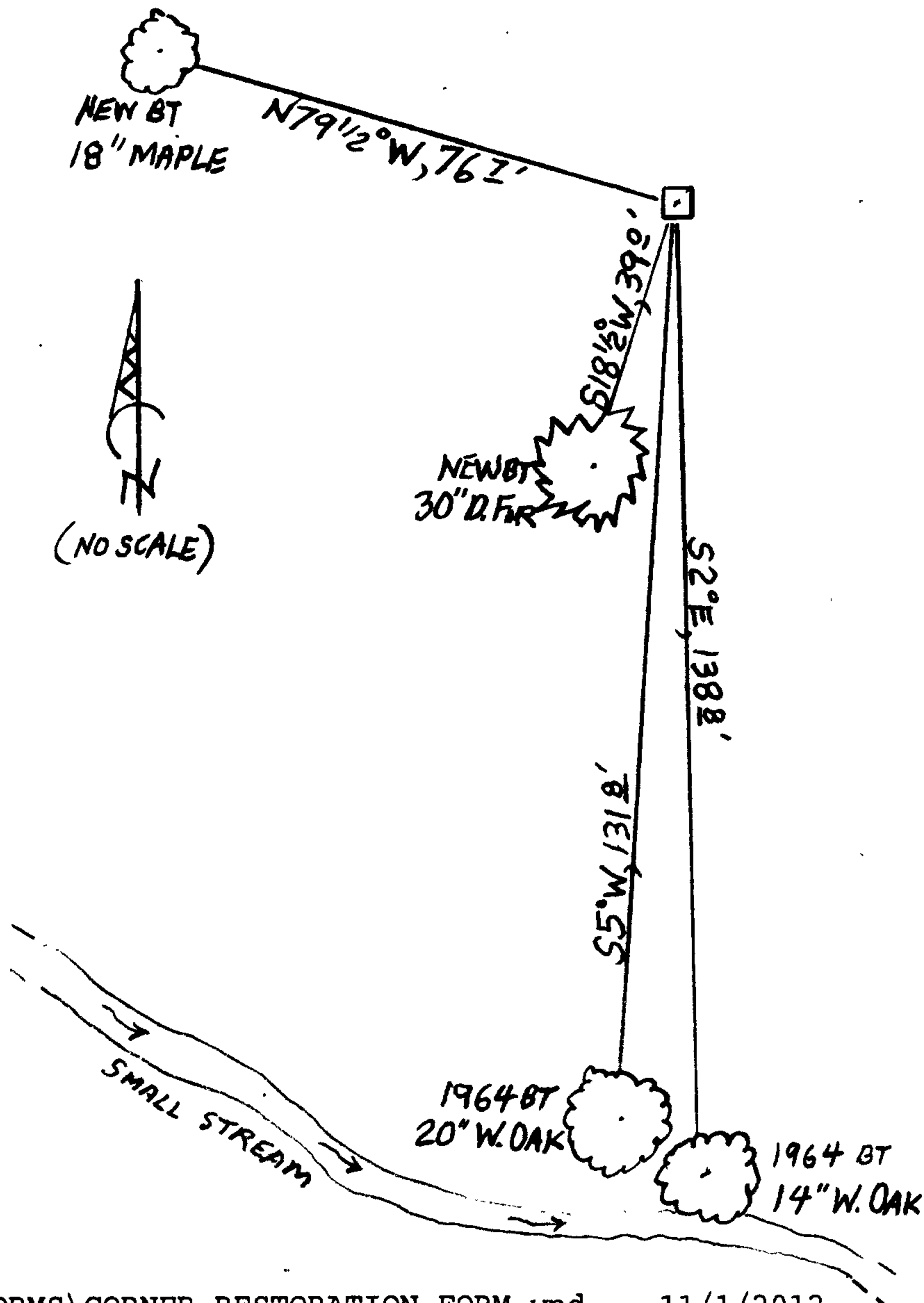
New Accessories

A 30 INCH DIAM. DOUGLAS FIR SCRIBED "1/4 S18CS" "BT" ON A DOUBLE BLAZE; BEARS S18 1/2° W, 39° FEET DISTANT.

AN 18 INCH DIAM. MAPLE SCRIBED "CS 1/4 S18" "BT" ON A DOUBLE BLAZE; BEARS N 79 1/2° W, 76 1/2 FEET DISTANT.

Sketch of Monument, Accessories, and General Area

Location & Comments



MONUMENT IS ON FLAT OPEN GROUND SMALL STANDS OF OAK, MAPLE AND SOME FIR INTERSPERSE AREA.

MONUMENT IS APPROX. 175 FT. WESTERLY FROM TH I-5 MEDIAN AND APPROX. 145 FT. NORTH OF A SMALL STREAM COURSEING EASTERLY.

Comp. Decline. 15 1/2° E
Agency D.C. S.O.
Party Chief STEPHEN JOHN FLAUSE
Note keeper Stephen John Flause
Witnesses MIKE S. KOCH

Surveyor's Seal

REGISTERED PROFESSIONAL LAND SURVEYOR

Signature of Randall W. Smith

OREGON
JULY 25, 1990
RANDALL W. SMITH
2400

Renewal 6-30-14