

RENEWAL

Monument Set (Procedure and Description)

MONUMENT DETAIL

CORNER SET BY SURVEY M 165-36

DOUGLAS COUNTY SURVEYOR

T 21 S

R 12 W

S 26

1/4

S 35

2013

A 2 1/2 INCH DIAM. BRASS CAP (MARKED AS AT RIGHT) ON A 1 INCH I.D. BY 30 INCH LONG IRON PIPE IS SET PLUMB IN GROUND AND PROTRUDING 4 INCHES ABOVE SURFACE. (NOTE FOR MONUMENT IS FILLED MOSTLY WITH NON-NATIVE GRAVEL TO STABILIZE SOFT GROUND CONDITIONS.)

New Accessories

A 33 INCH DIAMETER DOUGLAS FIR SCRIBED "1/4 S 35 CS" "BT" ON A DOUBLE BLAZE; BEARS S 39 3/4 E, 262 FEET DISTANT.

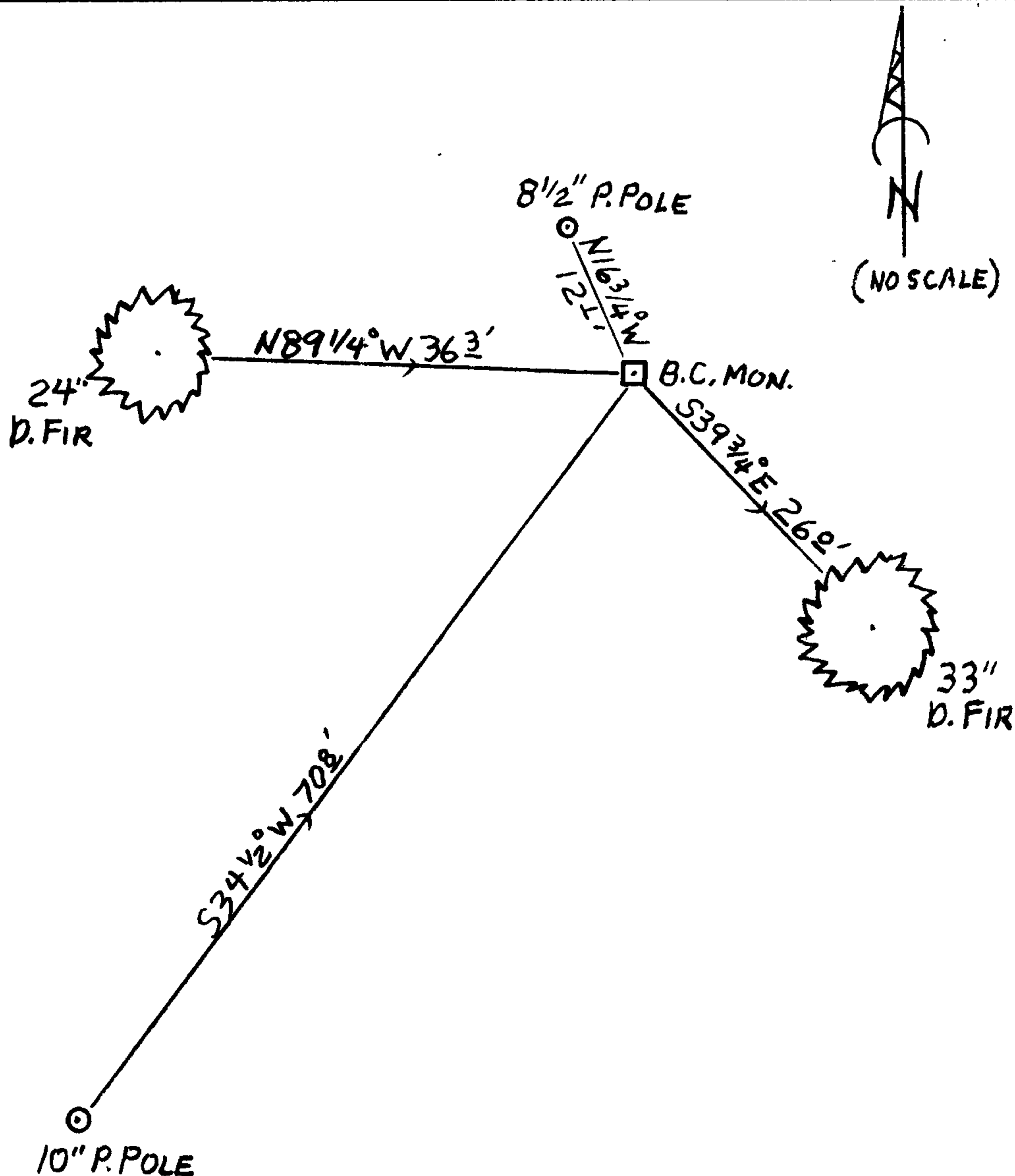
A 10 INCH DIAM. POWER POLE MARKED "AE 263"; BEARS S 34 1/2 W, 708 FEET DISTANT. 24

A 24 INCH DIAM. DOUGLAS FIR SCRIBED "1/4 S 26 CS" "BT" ON A DOUBLE BLAZE; BEARS N 89 1/4 W, 363 FEET DISTANT.

AN 8 1/2 INCH DIAM. POWER POLE MARKED "AE 263"; BEARS N 16 3/4 W, 12 1/2 FEET DISTANT. 23

Sketch of Monument, Accessories, and General Area

Location & Comments



B.C. MONUMENT IS AT MOST EASTERLY SUMMIT OF MAIN E-W'LY RUNNING SPINE RIDGE OF BOLON ISLAND. A LOWER AND SMALLER RIDGE RUNS NORTHEAST FROM THIS LOCATION. RIDGE IS COVERED WITH OPEN WOODS COMPOSED OF ALDER, FIR AND CEDAR.

Comp. Decline. 15 3/4 E

Agency DCSO

Party Chief STEPHEN JOHN FLAUSE

Note keeper Stephen John Flause

Witnesses MIKE S. KOCH

Surveyor's Seal

REGISTERED PROFESSIONAL LAND SURVEYOR

Handwritten signature of Randall W. Smith

OREGON
JULY 25, 1980
RANDALL W. SMITH
2488