

GOVERNMENT CORNER RESTORATION FORM

FILED

TOWNSHIP 26 S RANGE 05 W SEC. 23 PLSS # 523300

Date: 5/6/2013 By: JC

This survey consists of:

DOUGLAS COUNTY OREGON

DATE APRIL 15, 2013

Map: _____

Narrative: _____

Corner Designation.

Corner Rpt: CS 67/38-24

DOUGLAS COUNTY
SURVEYOR

WITNESS TO M.C. S23
S26

- Condition Report
- Not Found
- Renewed
- Unrecorded
- Surveyed In
- Referenced Out

Previous Renewals 1958
Monument(s) Found: (Condition and Source)

MONUMENT DETAIL

A 2 1/2 INCH DIAM. BRASS CAP (MARKED AS AT RIGHT) ON A 1 INCH I.D. IRON PIPE FIRMLY SET APPROXIMATELY 7 INCHES BELOW GROUND BUT LEANING ENE APPROX. 0.5 FEET FROM PLUMB. THIS MONUMENT WAS SET AS A WITNESS TO THE TRUE M.C. POSITION 70 FEET WEST.

COUNTY SURVEYORS OFFICE
T26S R5W
WIT. COR.
70 FT.
WEST TO
M.C. S23
S26
1958

(WITNESS B.C. ACCESSORIES BELOW ARE MEASURED FROM MONUMENTS PLUMB POSITION).

Accessories Found

NO EVIDENCE OF ORIGINAL M.C. BEARING TREES REMAINS.

EVIDENCE OF TWO 1958 B.T.'S REFERENCING THE WITNESS MONUMENT.
A 17" W. OAK NOW A 20 INCH DIAM. WHITE OAK (THE TOP OF WHICH IS BROKEN OUT BUT TREE IS ALIVE AND GROWING) SHOWING POSSIBLE EVIDENCE OF A LARGE HEALED BLAZE, BEARS S64 1/2° E, 56 2 FEET DISTANT. (HAS 1958 B.T. TAG)
AN 8" W. OAK NOW A SMALL BUT DISTINCT ROOT-HOLE DEPRESSION; BEARS N20° E, 37 6 FEET DISTANT.

RENEWAL

Monument Set (Procedure and Description)

MONUMENT DETAIL

N/A

MONUMENT IS RETURNED TO PLUMB POSITION AND NOW IS APPROXIMATELY 6 INCHES BELOW GROUND LEVEL.

New Accessories

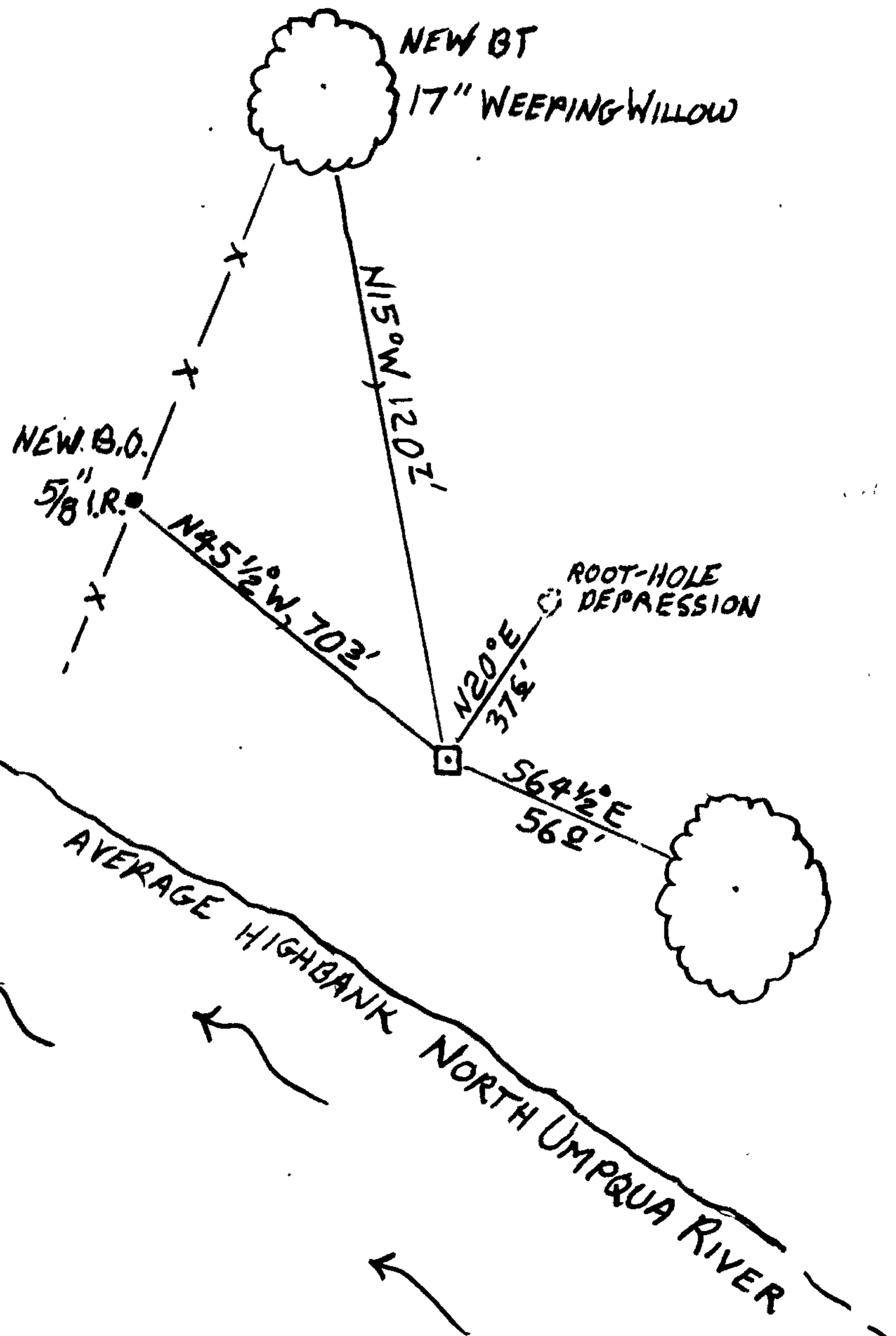
A 17 INCH DIA. WEeping WILLOW WHICH IS NOT BLAZED OR SCRIBED (THIS IS ONLY W. WILLOW IN LOCAL AREA); BEARS N15°W, 120[±] FEET DISTANT (DUE TO ODD ROOT GROWN DISTANCE MEASUREMENT FALLS ON SE FACE OF TRUNK).

A 5/8 INCH DIAM. IRON ROD FIRMLY AND PLUMBLY SET PROTRUDING 6 INCHES ABOVE GROUND (IN FENCE-LINE DIVIDING LOTS 13 AND 14 OF ECHO BEND ESTATES SBD); BEARS N45¹/₂°W, 70[±] FEET DISTANT.

NO SUITABLE TREES TO NE OR SW

Sketch of Monument, Accessories, and General Area

Location & Comments



BC MONUMENT IS 40-50 FEET BACK FROM RIVER HIGH BANK IN A SANDY FLOOD-PLAIN; AT EDGE OF RESIDENTIAL AREA IN OPEN WOODLAND WITH OAK AND COTTONWOOD TREES.

Comp. Decline. 15¹/₂°E
Agency D.C.S.O.
Party Chief STEPHEN JOHN FLAUSE
Note keeper Stephen John Flause
Witnesses MIKE S. KOCH

Surveyor's Seal

REGISTERED PROFESSIONAL LAND SURVEYOR

Randall W. Smith

OREGON
JULY 25, 1990
RANDALL W. SMITH
2400

RENEWAL 6-30-2014