

GOVERNMENT CORNER RESTORATION FORM

FILED

TOWNSHIP 26 S RANGE 05 W SEC. 14 PLSS # 039080

Date: 5/6/2013 By: X  
This survey consists of:

DOUGLAS COUNTY OREGON

DATE APRIL 11, 2013

Map: \_\_\_\_\_

Corner Designation

Narrative: \_\_\_\_\_  
Corner Rpt: CSC 67/38-22

DOUGLAS COUNTY  
SURVEYOR

NE INT L

DLC  
39

Previous Renewals 1954  
Monument(s) Found: \_\_\_\_\_ (Condition and Source)

- \_\_\_\_\_ Condition Report
- \_\_\_\_\_ Not Found
- Renewed
- \_\_\_\_\_ Unrecorded
- \_\_\_\_\_ Surveyed In
- \_\_\_\_\_ Referenced Out

MONUMENT DETAIL

COUNTY SURVEYORS

T26S R5W

NE INT  
COR

CL 39

1954  
OFFICE

NO EVIDENCE OF ORIGINAL MONUMENT.

FROM THE 1954 RENEWAL A 2 1/2 INCH DIAM. BRASS CAP (MARKED AS AT RIGHT) ON A 1 INCH I.D. IRON PIPE WHICH IS BENT AND LEANING APPROX. 1 3/4 FEET N.W. LY FROM ITS PLUMB POSITION. THIS MONUMENT PROTRUDES APPROX. 14 INCHES ABOVE A ROUGH, LOW 2 FOOT DIAM. MOUND OF STONE.

(ACCESSORIES BELOW ARE MEASURED FROM FOUND MONUMENT'S PLUMB POSITION. WHICH WAS DETERMINED BY UNCOVERING AND BENT BASE OF THE 1 INCH I.D. BY 32 INCH LONG IRON PIPE.)

(ALL THE FOLLOWING MEASURED BEARINGS ARE TRUE AND ARE BASED ON RECORD (FROM DC 50 MAP RM. 1-14) BETWEEN NE INT. L AND NE EXT. L OF DLC 39.)  
Accessories Found

TWO 1954 RENEWAL BEARING TREES.  
A 6" W. OAK NOW A 15 INCH DIAM. WHITE OAK WITH BLAZES NO LONGER VISIBLE; BEARS S 87 3/4° E, 713 3/4 FEET DISTANT (AS PER RECORD).

A 14" W. OAK NOW A 31 INCH DIAM. WHITE OAK WITH A FULLY HEALED DOUBLE BLAZE; BEARS S 26 1/4° E, 747 1/2 FEET DISTANT (AS PER RECORD).

RENEWAL

Monument Set (Procedure and Description)

MONUMENT DETAIL

THE PLUMB POSITION OF THE FOUND 1954 B.C. MONUMENT IS REFERENCED OUT, THE MONUMENT IS REMOVED AND IN ITS PLACE IS SET A NEW B.C. MONUMENT; A 2 1/2 INCH DIAM. BRASS CAP (MARKED AS AT RIGHT) ON A 1 INCH I.P. X 30 INCH LONG IRON PIPE PLUMBLY POSITIONED APPROX. 6 INCHES BELOW THE GROUND SURFACE. THE LOW STONE MOUND IS REPLACED DIRECTLY OVER THE MONUMENT POSITION.

DOUGLAS COUNTY SURVEYOR

T 26 S R 5 W

NE INT L

DLC

39

2013

New Accessories

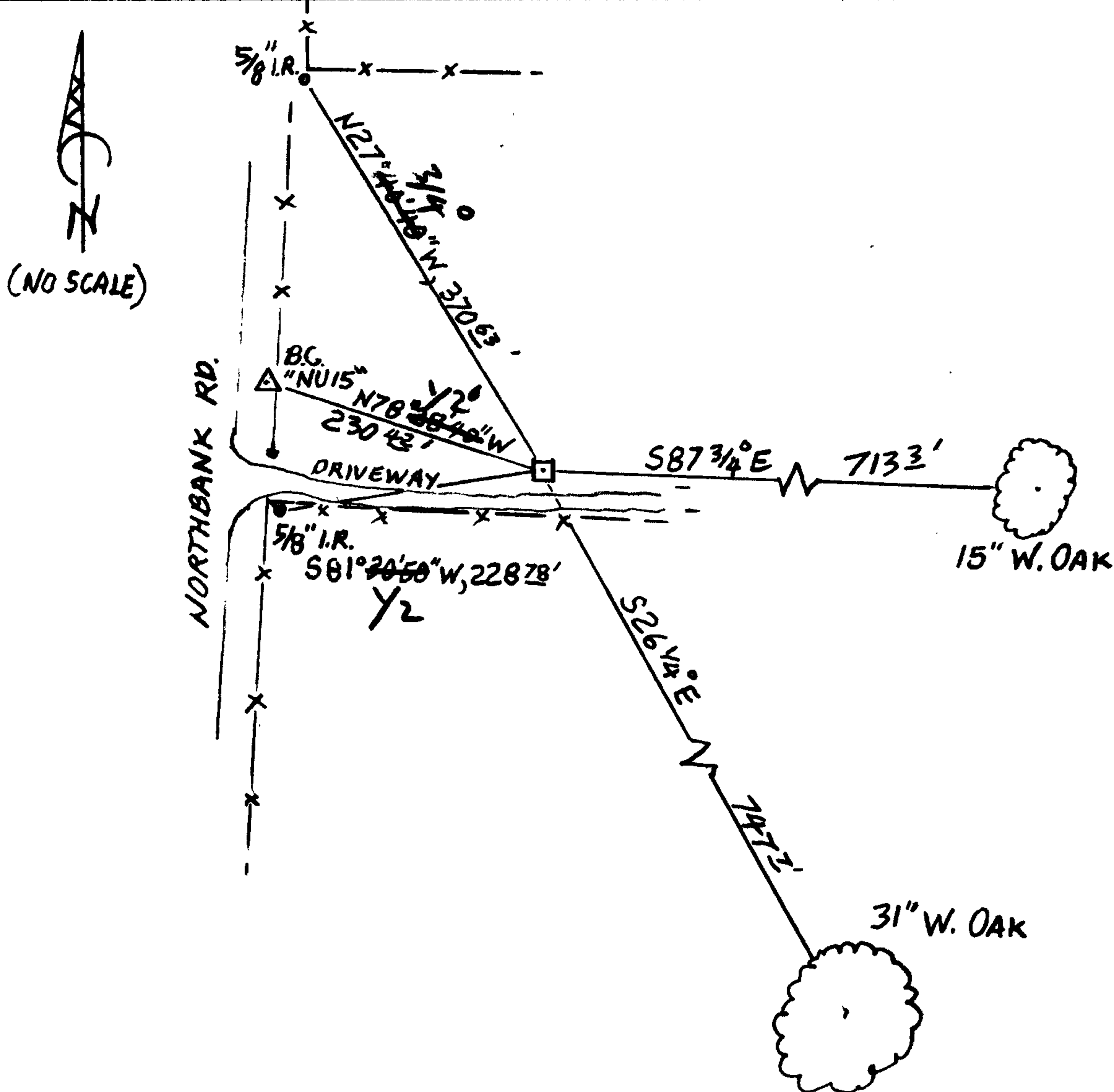
A 5/8 INCH DIAM. IRON ROD, FIRMLY AND PLUMBLY SET PROTRUDING 4 INCHES ABOVE GROUND (1 FOOT SOUTH OF AN E-W. FENCE LINE AND 7 1/2 FEET EAST OF CORNER OF FENCES RUNNING SSW AND EAST); BEARS S 81° 30' 50" W, 228 7/8 FEET DISTANT.

A 2 7/8 INCH DIAM. DCSD BRASS CAP STAMPED "NU 15 1972" SET FLUSH IN TOP OF AN 8 INCH DIAM. CONCRETE FILLED, CONCRETE BELL TILE, FIRMLY AND PLUMBLY SET PROTRUDING 4 INCHES ABOVE GROUND (2 1/2 FEET WEST OF A NNE RUNNING FENCE); BEARS N 78° 28' 40" W, 230 4/8 FEET DISTANT.

A 5/8 INCH DIAM. IRON ROD, FIRMLY AND PLUMBLY SET PROTRUDING 10 INCHES ABOVE GROUND (AT CORNER OF FENCES RUNNING NORTH AND EAST); BEARS N 27° 40' 40" W, 370 6/8 FEET DISTANT.

Sketch of Monument, Accessories, and General Area

Location & Comments



MONUMENT IS IN FLAT OPEN PASTURE 20 FT. NORTH OF GRAVEL DRIVEWAY FOR #724 NORTHBANK RD. MONUMENT IS APPROX. 250 FT EAST FROM E OF NORTHBANK RD.

Comp. Decline. 15 1/2° E  
Agency DCSD  
Party Chief STEPHEN JOHN FLAUSE  
Note keeper Stephen John Flause  
Witnesses MIKE S. KOCH

Surveyor's Seal

REGISTERED PROFESSIONAL LAND SURVEYOR

OREGON JULY 25, 1990 RANDALL W. SMITH 2489

Renewal 6-30-2014