

GOVERNMENT CORNER RESTORATION FORM

FILED

TOWNSHIP 31 S RANGE 05 W SEC. 3 PLSS # 400600

Date: 3-27-2013 By: X  
This survey consists of:

DOUGLAS COUNTY OREGON

DATE FEB. 21, 2013

Map: \_\_\_\_\_

Narrative: \_\_\_\_\_

Corner Designation

Corner Rpt: CS 67/38-21

S4 | S3  
S9 | S10

DOUGLAS COUNTY  
SURVEYOR

Previous Renewals 1930, 1957, 1960, 1966  
Monument(s) Found: (Condition and Source)

- Condition Report
- Not Found
- Renewed
- Unrecorded
- Surveyed In
- Referenced Out

FROM THE 1966 BLM CORRECTIVE RESURVEY  
A 3 1/8 INCH DIAMETER BRASS CAP (MARKED AS AT RIGHT)  
ON A 2 1/2 INCH O. D. IRON PIPE FIRMLY AND PLUMBLY  
SET PROTRUDING 2 INCHES FROM A ROUGH MOUND OF  
STONE MEASURING APPROXIMATELY 30 INCHES IN DIA-  
METER AND 1/2 FOOT TALL.  
1957 MONUMENT NOT EVIDENT.

MONUMENT DETAIL

U. S. DEPT OF THE INTERIOR  
T315 R5W

S4 | S3  
S9 | S10

1966

BUR. OF LAND MANAGEMENT

Accessories Found

EVIDENCE OF THREE 1930 RENEWAL B.T.S.  
A 24" FIR NOW A 39 INCH DIAMETER DOUGLAS FIR WITH A FULLY HEALED DOUBLE BLAZE; BEARS  
S72°W, 375 FEET DISTANT (BEARING AGREES WITH 1966 B.L.M. RECORD, DISTANCE AGREES WITH  
1957 RECORD).  
AN 18" FIR NOW A 36 INCH DIAMETER DOUGLAS FIR WITH A FULLY HEALED DOUBLE BLAZE; BEARS  
N28°W, 390 FEET DISTANT (RECORD N31°W, 39.0 FT.)  
A 12" FIR NOW A ROOT-HOLE WITH A 16 INCH DIAMETER FALLEN BURNED AND OUT OF POSITION FIR  
(NO BLAZE SEEN) FOUND NEARBY. THE ROOT-HOLE BEARS N10°E, 66 1/2 FEET DISTANT (AS PER RECORD).

1957 TOWER REFERENCE NOT CHECKED; THERE ARE NOW MANY TOWERS ON RIDGE TOP.

EVIDENCE OF TWO 1966 RENEWAL B.T.S.  
A 6" D. FIR NOW A 14 INCH DIAMETER 16 INCH TALL ROTTEN FIR STUMP WITH A HEALED  
LOW BLAZE (BLAZE OPENED TO SHOW SCRIBING "BT"); BEARS N21°E, 470 FEET DISTANT  
(RECORD N21°E, 48.0 FT.)  
A 4" LIVE OAK NOW A ROTTEN AND BROKEN 3 INCH DIAMETER 1 FOOT TALL OAK STUMP  
WITH REMNANTS OF A PARTIALLY HEALED BLAZE SHOWING THE SCRIBING "BT"; BEARS  
S66 1/2°E, 290 FEET DISTANT (RECORD S69°E, 320 FT.). BROKEN-OFF 5 INCH DIAMETER TRUNK HAS A  
PARTIALLY HEALED BLAZE SHOWING THE SCRIBING "R" WS10CS".

N/A

N/A

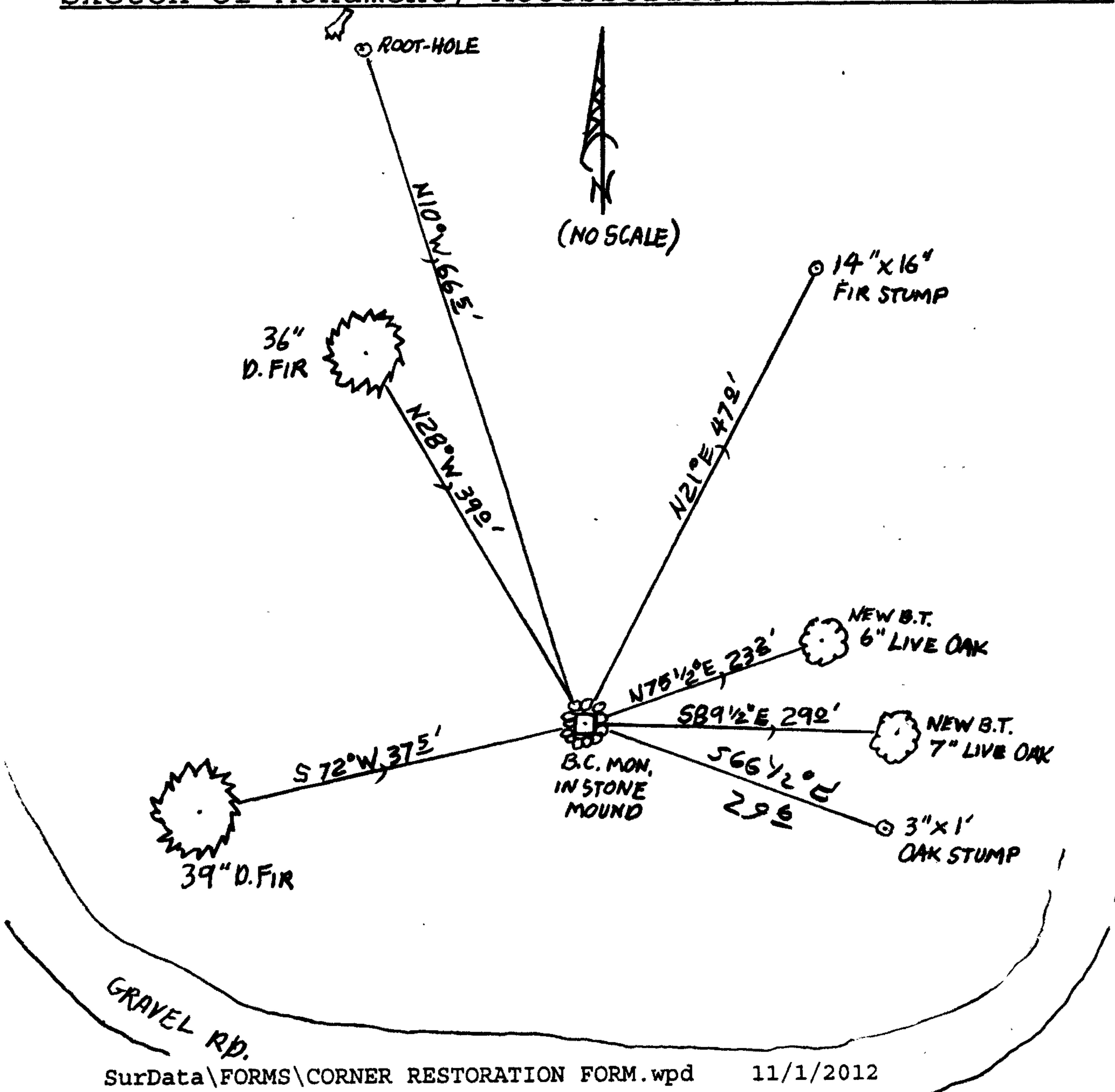
New Accessories

A 6 INCH DIAMETER LIVE OAK SCRIBED "X" "CSBT" ON A HIGH-LOW BLAZE; BEARS N75°2'E, 232 FEET DISTANT.

A 7 INCH DIAMETER LIVE OAK SCRIBED "X CS" "BT" ON A HIGH-LOW BLAZE; BEARS S89°1/2'E, 292 FEET DISTANT.

Sketch of Monument, Accessories, and General Area

Location & Comments



MONUMENT IS ON MORE OR LESS FLAT GROUND AT TOP OF HIGH SOUTHERLY RUNNING RIDGE. RIDGE IS NEAR SUMMIT OF, AND ON SOUTH FLANK OF CANYON MOUNTAIN. AREA HAS SCATTERED FIRS AND LIVE OAK WITH LOW DENSE BRUSH.

Comp. Decline. 15 1/2° E  
Agency D.C.S.O.  
Party Chief STEPHEN JOHN FLAUSE  
Note keeper Stephen John Flause  
Witnesses MIKE S. KOCH

Surveyor's Seal

REGISTERED PROFESSIONAL LAND SURVEYOR

*Handwritten signature of Randall W. Smith*

OREGON  
JULY 25, 1990  
RANDALL W. SMITH  
2409

RENEWAL 6-30-2018