

FILED

GOVERNMENT CORNER RESTORATION FORM

Date: 2/13/2013 By: JC

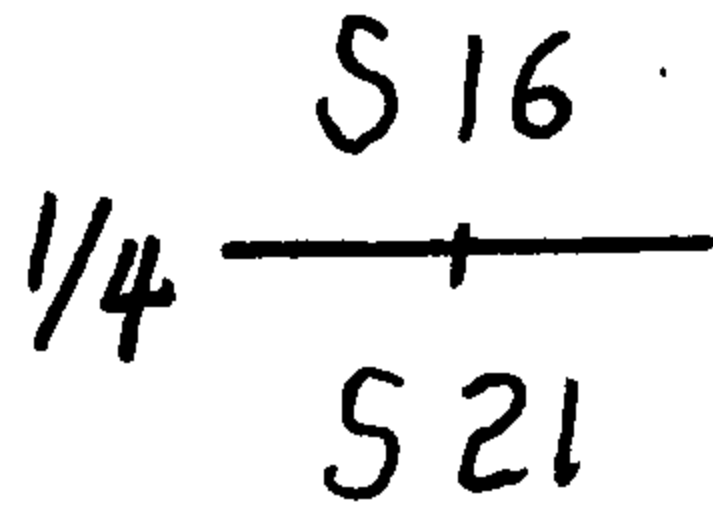
Township 22S Range 06W Sec. 16

County DOUGLAS This survey consists of:

State OREGON Date FEB. 7, 2013

No. 340400 Narrative: _____
Corner Rpt: CS 67/38-7

Corner Designation



DOUGLAS COUNTY

- Condition Report Only
- Not Found
- Renewed
- Unrecorded
- Surveyed In
- Referenced Out

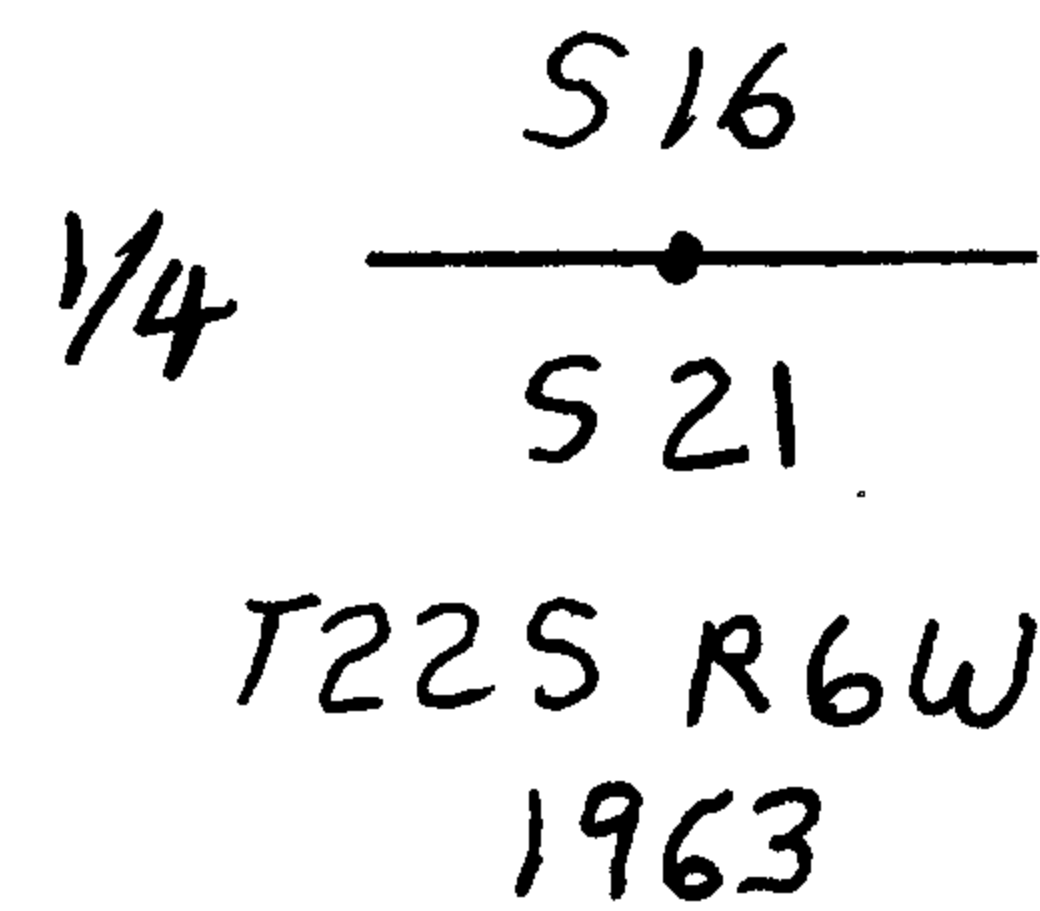
Previous Renewals 1963, 1974, 1976

MONUMENT DETAIL

Monument(s) Found: (Condition and Source)

U.S. CANASTRAL SURVEY

FROM THE 1963 BLM RESURVEY, A 3 1/4 INCH DIA-METER BRASS CAP (MARKED AS AT RIGHT) ON A 2 INCH I. D. IRON PIPE WHICH IS FIRMLY SET BUT LEANS APPROXIMATELY 0 1/2 FEET NORTHWEST-ERLY FROM PLUMB AND PROTRUDES 4 INCHES ABOVE GROUND.



BUREAU OF LAND MANAGEMENT

Accessories Found:

(MEASUREMENTS BELOW ARE FROM PLUMB B.C. POSITION)

WE OPEN LARGE STUMPS IN VICINITY OF B.C. MONUMENT SEARCHING FOR O.B.T. EVIDENCE; NONE IS FOUND.

EVIDENCE OF ONE 1963 RENEWAL BEARING TREE FOUND. A FIR 39" DIA. NOW A ROTTED 37 INCH DIAMETER, 3 FOOT TALL FIR STUMP WITH POSSIBLE ROTTED EDGES OF BLAZE SCAR; BEARS N55 1/2 ° E, 30 FEET DISTANT (AS PER RECORD).

EVIDENCE OF THE TWO 1974 RENEWAL BEARING TREES FOUND. A 10" D. FIR NOW A ROOT DEPRESSION; BEARS N30 ° W, 69 1/2 FEET DISTANT (AS PER RECORD). A 12" D. FIR NOW A ROOT-HOLE WITH ROTTED FIR STUMP FRAGMENTS; BEARS N21 ° E, 65 1/2 FEET DISTANT (AS PER RECORD).

EVIDENCE OF THE TWO 1976 RENEWAL BEARING TREES FOUND. A 16" D. FIR NOW A 24 INCH DIAMETER, 1 1/2 FOOT TALL DOUGLAS FIR STUMP WITH A FULLY HEALED LOWER BLAZE (WE OPEN AND FIND SCRIBING "BT"); BEARS N03 ° W, 65 1/2 FEET DISTANT (AS PER RECORD). A 15" D. FIR NOW A 23 INCH DIAMETER, 3 FOOT TALL DOUGLAS FIR STUMP WITH A FULLY HEALED LOWER BLAZE (WE OPEN AND FIND SCRIBING "CS BT"); BEARS N33 ° W, 94 1/2 FEET DISTANT (AS PER RECORD).

C.S. File No 67/38-7

RENEWAL

Monument Detail

Monument Set (Procedure and Description)

FOUND B.C. MONUMENT IS RETURNED TO PLUMB POSITION AND NOW IS FIRMLY SET PROTRUDING 1 INCH ABOVE GROUND.

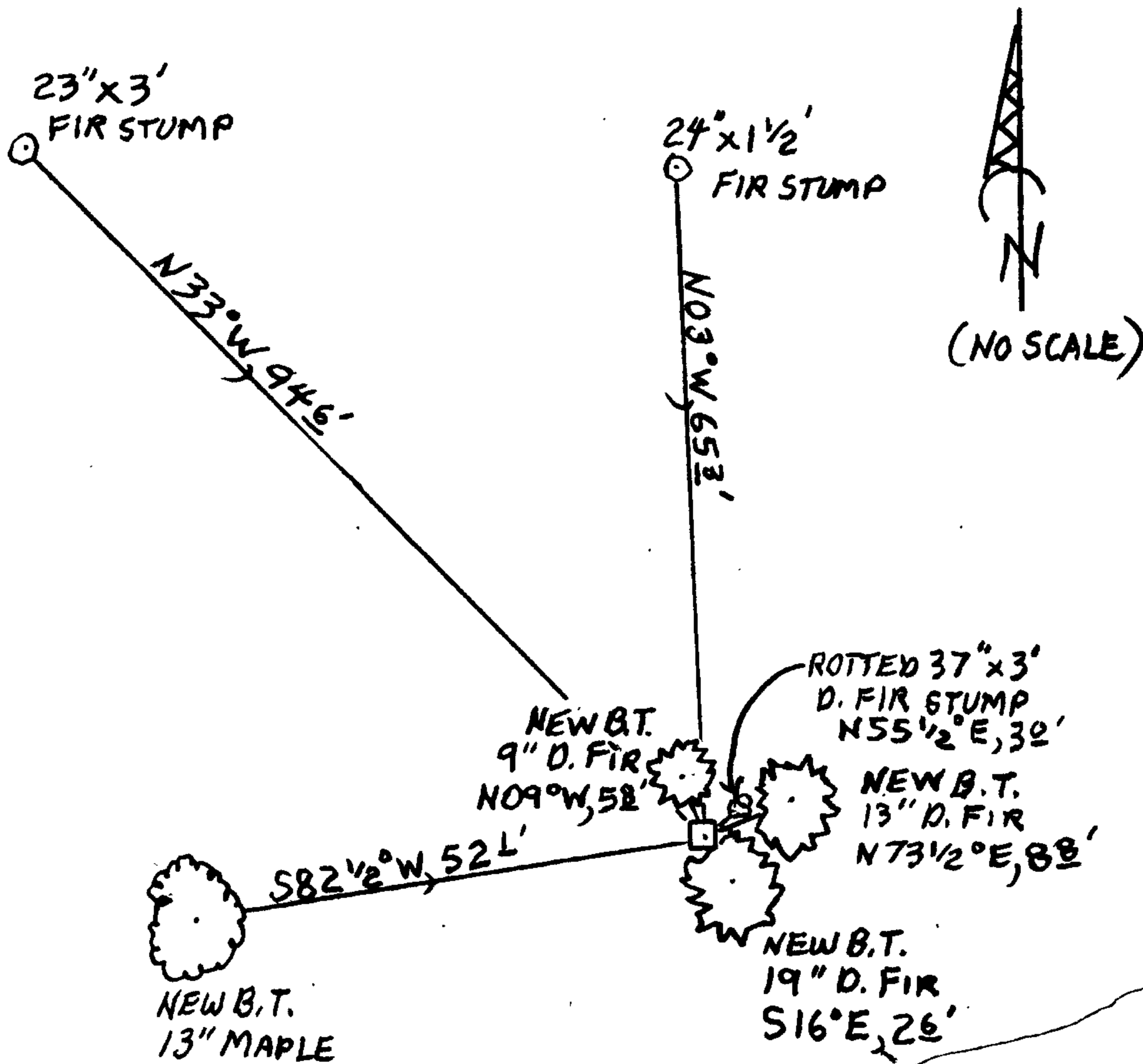
N/A

New Accessories

- A 13 INCH DIAMETER DOUGLAS FIR SCRIBED "1/4 S16 CS" "BT" ON A DOUBLE BLAZE; BEARS N73 1/2 E, 8 FEET DISTANT.
A 19 INCH DIAMETER DOUGLAS FIR SCRIBED "1/4 S21 CS" "BT" ON A DOUBLE BLAZE; BEARS S16 E, 2 FEET DISTANT.
A DOUBLE TRUNKED MAPLE SCRIBED ON THE 13 INCH DIAMETER (LARGER) TRUNK "1/4 S21 CS" "BT" ON A DOUBLE BLAZE; BEARS S82 1/2 W, 52 FEET DISTANT.
A 9 INCH DIAMETER DOUGLAS FIR SCRIBED "1/4 S16 CS" "BT" ON A DOUBLE BLAZE; BEARS N09 W, 5 FEET DISTANT.

Sketch of Monument, Accessories, and General Area

SKETCH ONLY SHOWS INTACT STUMPS AND NEW B.T.S



Location & Comments

MONUMENT IS ON MODERATE NORTH SLOPE AT TOE OF ROAD-FILL IN OLDER REPROD. D. FIR FOREST WITH SOME OAK, MAPLE AND CEDAR.

Comp. Declin. 15 1/2 E
Agency D.C.S.O.
Party Chief STEPHEN JOHN FLAUSE
Notekeeper Stephen John Flause
Witnesses MIKE S. KOCH

Address

Surveyor's Seal
REGISTERED PROFESSIONAL LAND SURVEYOR

Handwritten signature of Randall W. Smith

OREGON
JULY 25, 1990
RANDALL W. SMITH
2488

RENEWAL 6-30-2019