

GOVERNMENT CORNER RESTORATION FORM

FILED

TOWNSHIP 30 S RANGE 05 W SEC. 27 PLSS # 400200

Date: 1-23-2013 By: JC

DOUGLAS COUNTY OREGON

DATE JAN. 10, 2013

This survey consists of:

Map: \_\_\_\_\_

Narrative: \_\_\_\_\_

Corner Rpt: 67/38-1

Corner Designation

DOUGLAS COUNTY SURVEYOR

528 | 527  
533 | 534

Previous Renewals 1900, 1912, 1937, 1959, 1963, 1971  
Monument(s) Found: \_\_\_\_\_ (Condition and Source)

- \_\_\_\_\_ Condition Report
- \_\_\_\_\_ Not Found
- Renewed
- \_\_\_\_\_ Unrecorded
- \_\_\_\_\_ Surveyed In
- \_\_\_\_\_ Referenced Out

A BLM BRASS CAP MONUMENT SET IN 1967

POSSIBLY BY \_\_\_\_\_ THIS MONUMENT IS A 3 1/4 INCH DIAM. BRASS CAP (MARKED AS AT ABOVE RIGHT) ON A 2 INCH I.D. IRON PIPE, FIRMLY AND PLUMBLY SET PROTRUDING APPROX 6 INCHES ABOVE GROUND.

MONUMENT DETAIL

US DEPT OF THE INTERIOR  
T305 R5W

528 | 527  
533 | 534  
1967

BUR. OF LAND MANAGEMENT

ON THE NORTH EDGE OF THE FOUND BLM MONUMENT AND LEANING SLIGHTLY SOUTH IS A DCSD BRASS CAP MONUMENT FROM THE 1971 RENEWAL. THIS MONUMENT IS A 2 1/2 INCH DIAM. BRASS CAP (MARKED AS AT LOWER RIGHT) ON A 1 INCH I.D. IRON PIPE, FIRMLY SET PROTRUDING APPROX 15 INCHES ABOVE GROUND.

COUNTY SURVEYORS OFFICE

T305 R5W  
528 | 527  
533 | 534

A 2 INCH O.D. IRON PIPE (TOP WELL FLARED FROM BEING DRIVEN) IS FIRMLY SET PROTRUDING APPROX. 14 INCHES ABOVE GROUND AND SSE, 0.2 FEET FROM FOUND BLM MONUMENT. SIZE AND DESCRIPTION MATCH 1937 MONUMENT.  
Accessories Found

(ACCESSORIES ARE MEASURED FROM FOUND BLM BRASS CAP) 1971

NO GOOD EVIDENCE OF 1854 B.T.S BUT POSSIBLE ROOT-HOLE OF SW. BEARING TREE.

EVIDENCE OF THREE 1900 B.T.S.

A B. OAK 8" DIA. NOW A 42 INCH DIAMETER BLACK OAK (ALIVE, 8 FOOT STUMP REGREW 3 LARGE LIMBS) WITH A FULLY HEALED DOUBLE BLAZE; BEARS N18°E, 16 2/3 FEET DISTANT (AGREES WITH 1959 REC)

A FIR 8" DIA. NOW A ROOT-HOLE WITH FIR REMNANTS; BEARS N57°W, 32 2/3 FEET DISTANT (AS PER RECORD)

A LAUREL 6" DIA. NOW A 12 INCH DIAMETER MADRONE WITH A POSSIBLE HEALED BLAZE; BEARS S80 1/2°W, 36 2/3 FEET DISTANT (AS PER RECORD). THIS TREE IS DEAD AND WILL BE REMOVED SOON.

EVIDENCE OF TWO 1937 BEARING TREES FOUND.

A 14" FIR NOW A DEAD 28 INCH DIAMETER DOUGLAS FIR, WITH A FULLY HEALED DOUBLE BLAZE; BEARS N3 1/2°W, 58 1/2 FEET DISTANT (RECORD N1°W, 58 1/2 FT.).

A 14" FIR NOW A 33 INCH DIAMETER DOUGLAS FIR, WITH A FULLY HEALED DOUBLE BLAZE; BEARS S1 1/2°W, 43 2/3 FEET DISTANT (RECORD S4°W, 43 2/3 FT.).

EVIDENCE OF THE 1959 RENEWAL BEARING TREE A 13" CEDAR NOW A 28 INCH DIAMETER INCENSE CEDAR WITH A FULLY HEALED DOUBLE BLAZE; BEARS S56 1/2°E, 54 1/2 FEET DISTANT (RECORD S55°E, 54 1/2 FT.).

EVIDENCE OF THE 1963 RENEWAL BEARING TREE A 6" LAUREL NOW A DEAD 12 INCH DIAMETER MADRONE WITH A NEAR FULLY HEALED SINGLE BLAZE (FACE ROTTEN BEHIND OPENING); BEARS S81°W, 37 2/3 FEET DISTANT (AS PER RECORD) TREE WILL BE REMOVED SOON.

BLM CADASTRAL SURVEYOR LYNN RESICKENLY UNDER 1957 + 1967 SPECIAL INSTRUCTIONS, REMONUMENTATION GROUP # 350 + 614, SEE 1971 BLM SURVEY OF SECTION 35 NARRATIVE

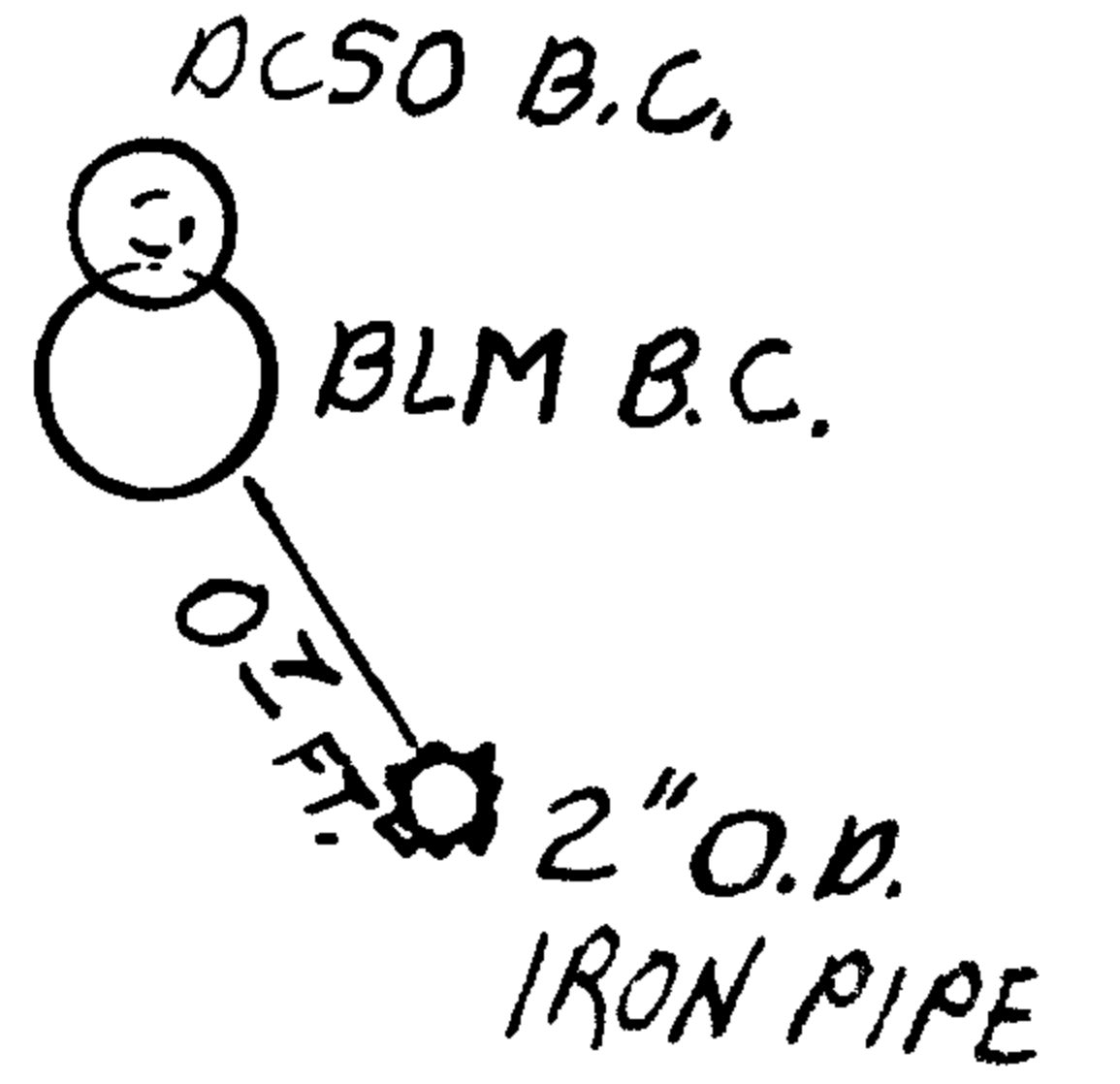
C.S. File 67/38-1

RENEWAL

Monument Set (Procedure and Description)

MONUMENT DETAIL

BLM CAP POSITION HAS BEEN USED IN ALL SURVEYS OF LAST 40+ YEARS.



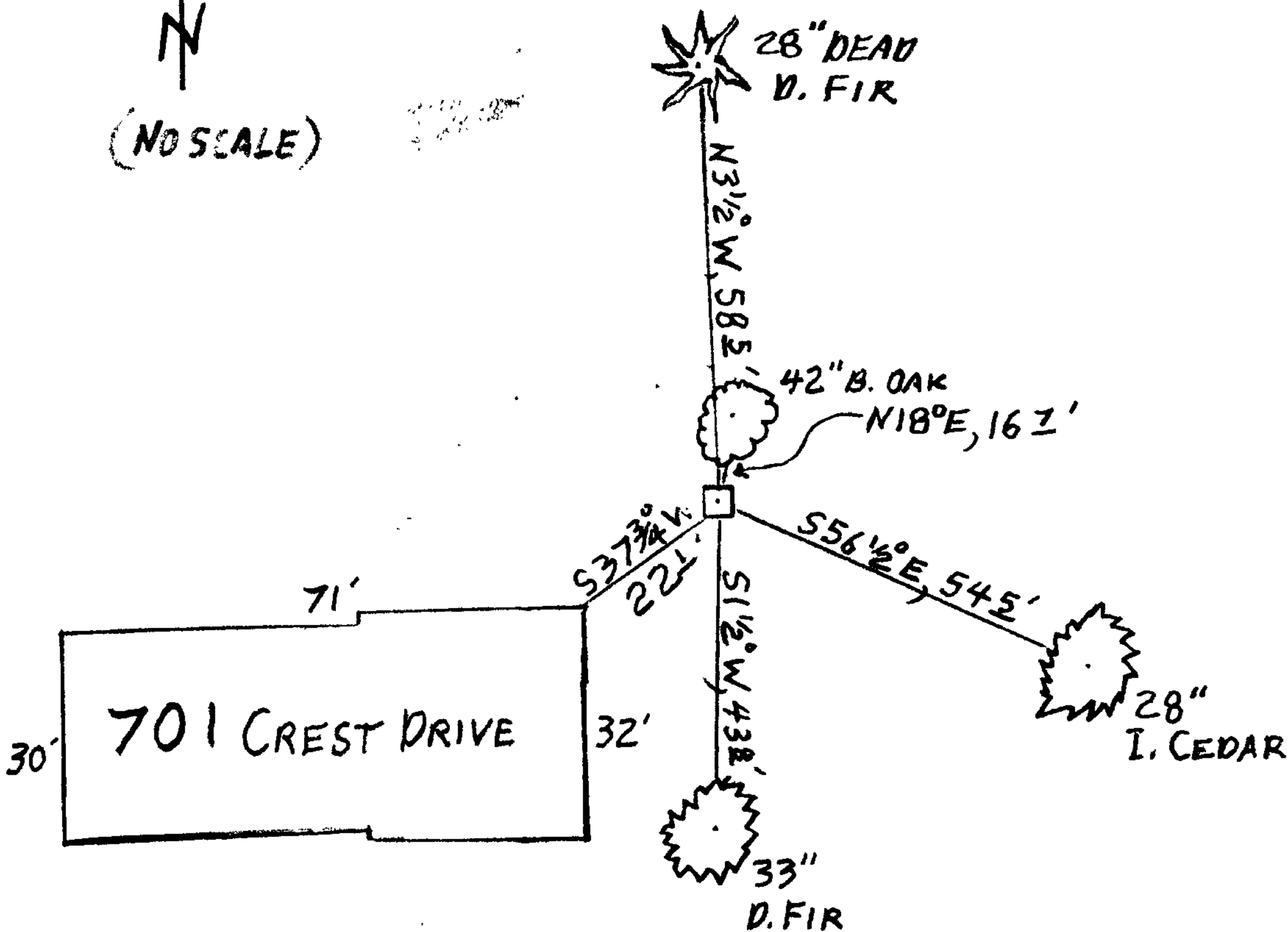
New Accessories

ALL FOUND B.T.S ARE RETAGGED WITH ALUMINUM B.T TAGS, IF NEEDED (EXCEPT THE 2 MARRONE)

THE CORNER OF THE CONCRETE BLOCK FOUNDATION WALL WHICH FORMS THE NORTHEAST CORNER OF THE HOUSE AT 701 CREST DRIVE, CANYONVILLE; BEARS S 37 3/4° W, 22 ± FEET DISTANT.

Sketch of Monument, Accessories, and General Area

Location & Comments



MONUMENT IS ON WOODED BENCH AT NORTH EDGE OF RESIDENTIAL AREA. FOREST IS OAK, MARRONE, FIR AND CEDAR.

Comp. Decline. 15 1/2° E  
 Agency DCSO  
 Party Chief STEPHEN JOHN FLAUSE  
 Note keeper Stephen John Flause  
 Witnesses MIKE S. KOCH

Surveyor's Seal

REGISTERED  
 PROFESSIONAL  
 LAND SURVEYOR

OREGON  
 JULY 25, 1990  
 RANDALL W. SMITH  
 2488

ROWNA 630-19