

GOVERNMENT CORNER RESTORATION FORM

FILED

Date: 11-5-2012 By: JC

Township 30S Range 05W Sec. 28

County DOUGLAS This survey consists of

State OREGON

Date OCT. 12, 2012

No. 050030

Map: _____
Narrative: _____
Corner Rpt: CS 67/36-30

Corner Designation

SW
DLC 50

DOUGLAS COUNTY

Condition Report Only

Not Found

Renewed

Unrecorded

Surveyed In

Referenced Out

Previous Renewals 1920, 1951, 1966, 1989

Monument(s) Found: (Condition and Source)

1966

NO EVIDENCE OF 1920, 1951 AND 1963 CORNER MONUMENTS FOUND.

FROM THE 1989 RENEWAL WE FIND A 3 INCH DIAMETER BRASS CAP (MARKED AS AT RIGHT) ON A 2 INCH I.D. IRON PIPE FIRMLY AND PLUMBLY SET PROTRUDING 3 INCHES ABOVE A ROUGH, LOW, APPROX. 2 FOOT DIAMETER MOUND OF STONE.

MONUMENT DETAIL

L 5 2391

T. 30S. R. 5W.

S.W. | DLC
COR. | 50

1989

Accessories Found:

ALL ACCESSORIES IN NE QUADRANT HAVE BEEN DESTROYED DURING RV PARK EXCAVATION WORK.

NO EVIDENCE REMAINS OF O.B.T OR 1920, 1951 AND 1966 BEARING TREES.

FOUND EVIDENCE OF TWO 1989 RENEWAL B.T.S

AN 11" CEDAR NOW A 13 INCH DIAMETER INCENSE CEDAR WITH A FULLY HEALED DOUBLE BLAZE; BEARS S23°E, 239 FEET DISTANT (RECORD S27°E, 239 FEET).

A 7" W. OAK (MISIDENTIFIED) NOW AN 8 INCH DIAMETER ASH WITH A PARTIALLY HEALED DOUBLE BLAZE STILL HAVING THE SCRIBING "DLC" LEGIBLE; BEARS N52 1/2°W, 492 FEET DISTANT (RECORD N53 1/2°W, 492 IS TO TREE CENTER AT UPPER BLAZE HEIGHT).

C.S. File No 67/36-30

Monument Set (Procedure and Description)

Monument Detail

N/A

N/A

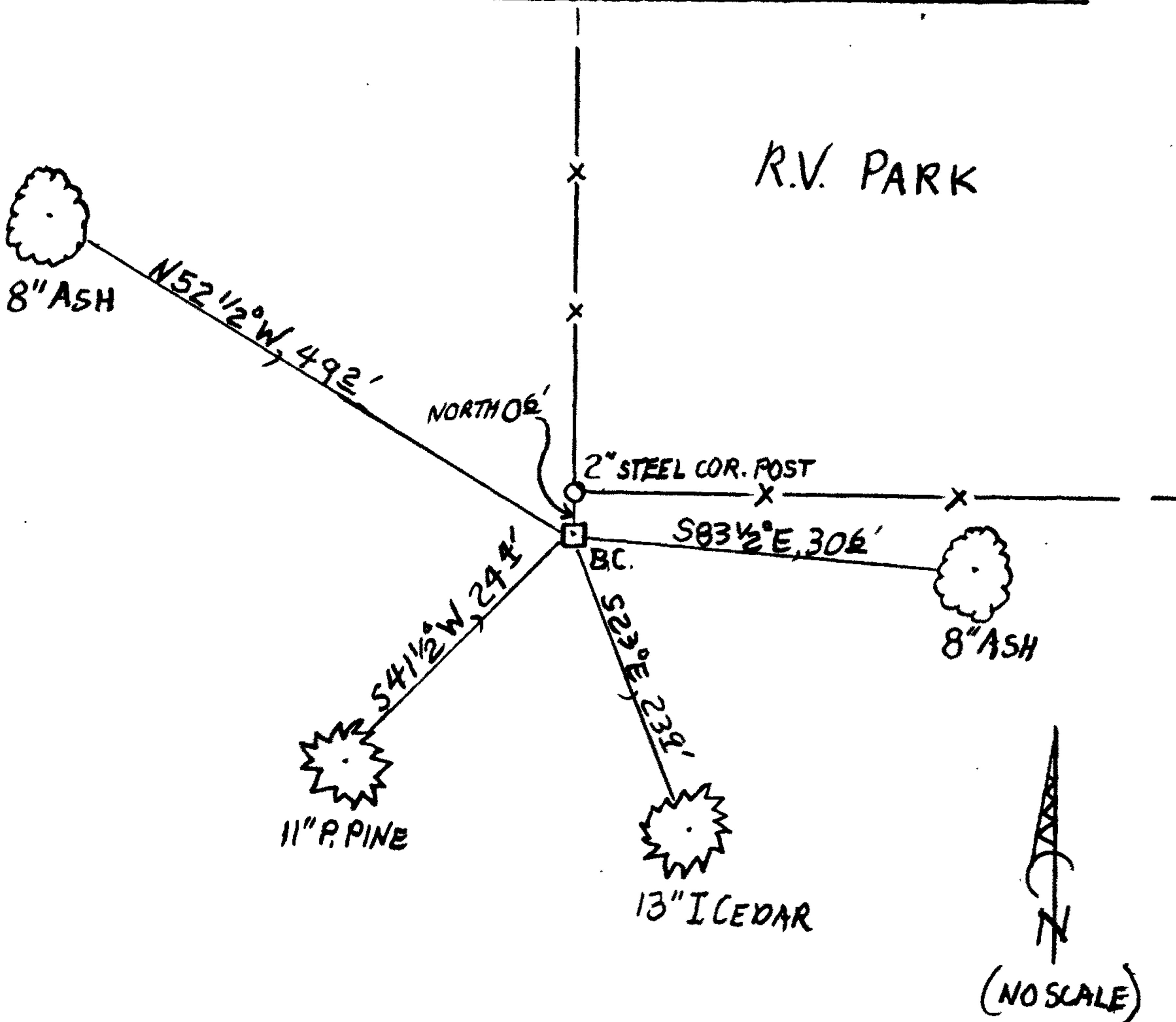
New Accessories

A 2 INCH I.D. STEEL FENCE CORNER POST FOR A CHAIN-LINK FENCE RUNNING NORTH AND EAST; BEARS NORTH, 0⁶ FEET DISTANT.

AN 8 INCH DIAMETER ASH SCRIBED "SW DLC 50 CS" "BT" ON A DOUBLE BLAZE; BEARS S 83 1/2° E, 30⁶ FEET DISTANT.

AN 11 INCH DIAMETER PONDEROSA PINE SCRIBED "SW DLC 50 CS" "BT" ON A DOUBLE BLAZE; BEARS S 41 1/2° W, 29⁴ FEET DISTANT.

Sketch of Monument, Accessories, and General Area



Location & Comments

MONUMENT IS IN FAT CREEK FLOOD-PLAIN GROUND APPROX 150 FEET EAST FROM A SEASONAL CREEK IN A MIXED WOODLAND OF ASH OAK PINE AND CEDAR.

Comp. Declin. 15 1/2° E
Agency DCSD
Party Chief STEPHEN JOHN FLAUSE
Notekeeper Stephen John Flause
Witnesses MIKE S. KOCH

Address

Surveyor's Seal

REGISTERED PROFESSIONAL LAND SURVEYOR

Renewal 6-30-2013

OREGON
JULY 25, 1990
RANDALL W. SMITH
2488