

GOVERNMENT CORNER RESTORATION FORM

Date: 10/15/2012 By: JC

Township 30S Range 05W Sec. 22

County DOUGLAS This survey consists of:

State OR Date OCT 4, 2012

No. 052078 Narrative: Corner Rpt: CS 67/36-29

Corner Designation

NW
DLC 52

DOUGLAS COUNTY

SURVEYOR
Condition Report Only

- Not Found
- Renewed
- Unrecorded
- Surveyed In
- Referenced Out

Previous Renewals 1923, 1963

Monument(s) Found: (Condition and Source)

N/A

FROM THE 1923 RENEWAL A 3/8 X 2 1/2 INCH STEEL SPRING FIRMLY AND PLUMBLY SET WITH TOP APPROX. LEVEL WITH GROUND SURFACE.

Accessories Found:

EVIDENCE OF THE ORIGINAL BEARING TREE FOUND. A LARGE INDISTINCT ROOT HOLE; BEARS APPROX S78°E, 2158 FEET DISTANT (AS PER RECORD).

EVIDENCE OF THE TWO 1923 RENEWAL B.T.'S FOUND
A 12" W. OAK NOW A 13 INCH DIAMETER FALLEN (OUT OF ORIGINAL POSITION) AND ROTTEN WHITE OAK WITH A PREVIOUSLY OPENED AND NOW ROTTEN AWAY LOWER BLAZE, LIES NEAR A ROOT HOLE WHICH BEARS S76 1/4°E, 72° FEET DISTANT (AS PER RECORD).
A 12" W OAK NOW A 13 INCH DIAMETER FALLEN AND ROTTEN WHITE OAK WITH THE REVERSE SCRIBING "NW DLC 52 CS" FOUND UPON OPENING A HEALED UPPER BLAZE. THE BASE OF THIS OAK (ROOT HOLE NO LONGER EVIDENT) BEARS S48 3/4°E, 83 1/2 FEET DISTANT (AS PER RECORD).

1963 BEARING TREE ARE SAME AS 1923 B.T.S. WE FIND NOTED FENCE CORNER (WITH FENCES RUNNING N-S AND E) BEARS N55°E 69 FEET (RECORD N65°E, 5.0 FT.)

RENEWAL

Monument Set (Procedure and Description)

Monument Detail

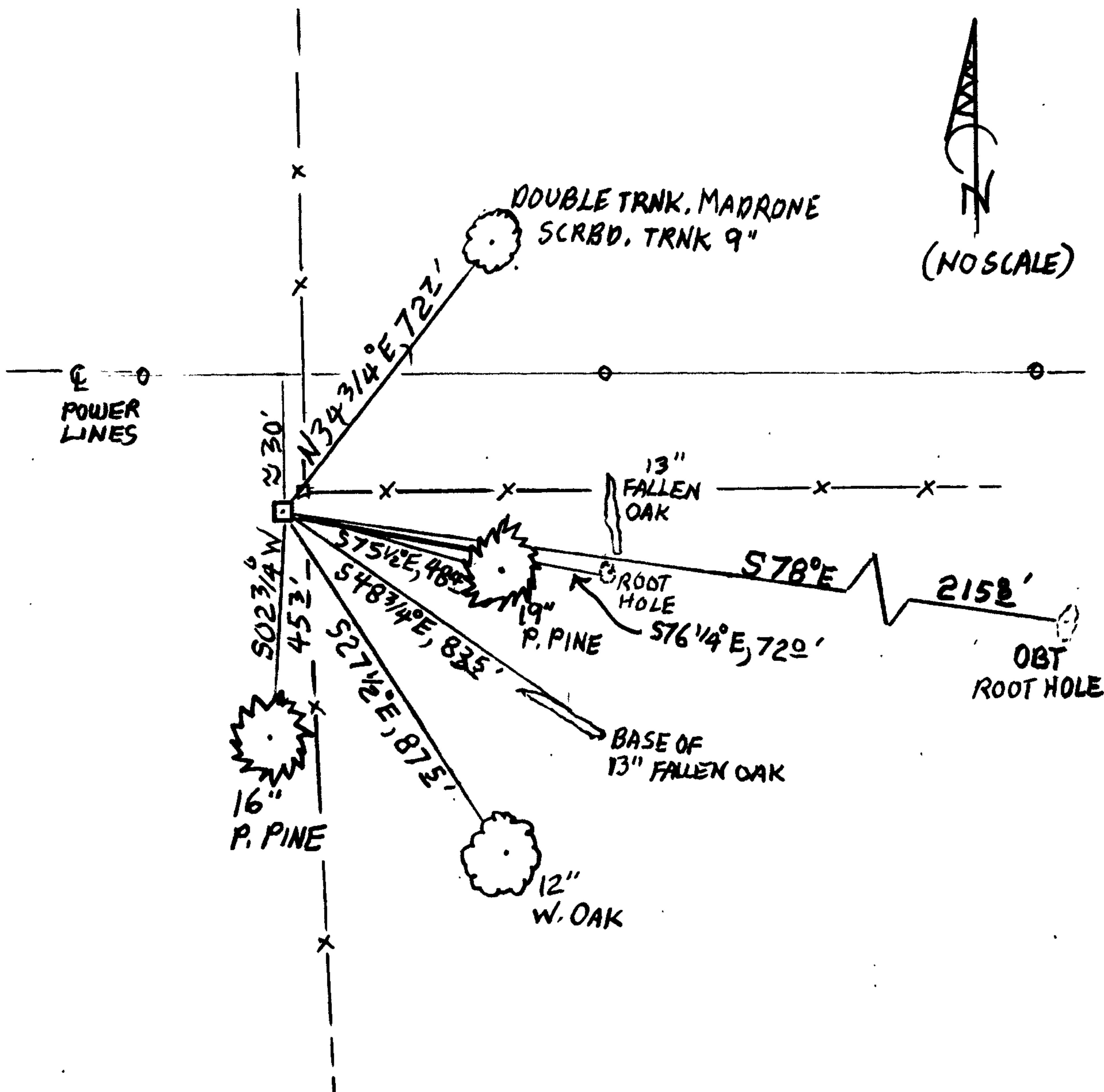
MONUMENT GOOD AS FOUND, WE DO NOT DISTURB.

N/A

New Accessories

- A DOUBLE TRUNK MADRONE OF WHICH THE MOST WESTERLY 9 INCH DIAMETER TRUNK IS SCRIBED "NWDLC 52 CS" "BT" ON A DOUBLE BLAZE; BEARS N 34 3/4° E, 72 1/2 FEET DISTANT.
- A 19 INCH DIAMETER PONDEROSA PINE SCRIBED "NWDLC 52 CS" "BT" ON A DOUBLE BLAZE; BEARS S 75 1/2° E, 48 1/2 FEET DISTANT.
- A 12 INCH DIAMETER WHITE OAK SCRIBED "NWDLC 52 CS" "BT" ON A DOUBLE BLAZE; BEARS S 27 1/2° E, 87 1/2 FEET DISTANT.
- A 16 INCH DIAMETER PONDEROSA PINE SCRIBED "NWDLC 52" "CS BT" ON A DOUBLE BLAZE; BEARS S 02 3/4° W, 45 3/4 FEET DISTANT.

Sketch of Monument, Accessories, and General Area



Location & Comments

ON VERY GENTLY SOUTH SLOPING PASTURELAND AT WEST EDGE OF A MAINLY OAK AND PINE WOODLAND.

Comp. Declin. 15 1/2° E
 Agency DCSO
 Party Chief STEPHEN JOHN FLAUSE
 Notekeeper Stephen John Flause
 Witnesses MIKE S. KOCH

Address

Surveyor's Seal

REGISTERED PROFESSIONAL LAND SURVEYOR

Randall W. Smith
 RENEWAL 6-30-2013

OREGON
 JULY 25, 1990
 RANDALL W. SMITH
 2400