

GOVERNMENT CORNER RESTORATION FORM

FILED

Date: 8/27/2012 By: SC  
This survey consists of:

Township 30S Range 05W Sec. 22 County DOUGLAS Map: \_\_\_\_\_  
State OREGON Date AUG. 13, 2012 No. 049030 Narrative: \_\_\_\_\_  
Corner Rpt: CS 67/36-21

Corner Designation

DOUGLAS COUNTY  
SURVEYOR

- Condition Report Only
- Not Found
- Renewed
- Unrecorded
- Surveyed In
- Referenced Out

Previous Renewals 1954, 1963

Monument(s) Found: (Condition and Source)

N/A

FROM THE 1954 RENEWAL AN AXLE SHAFT. WE FIND THIS MONUMENT TO BE A 1 1/4 INCH DIA. STEEL AXLE SHAFT (UNMARKED) FIRMLY SET AND PROTRUDING APPROX. 4 INCHES ABOVE GROUND. MONUMENT IS SET IN AN APPROX. 2 1/2 FOOT DIAM. ROUGH MOUND OF RIVER ROCK (ROCKS HAVE BEEN PAINTED PINK).

A STEEL FENCE POST PROTRUDING APPROX. 4 1/2 FT ABOVE GROUND IS SET NORTHEASTERLY APPROX. 0 1/2 FT. FROM FOUND AXLE.

Accessories Found:

NO EVIDENCE OF ORIGINAL BEARING TREE IS FOUND.

FROM THE 1954 RENEWAL, EVIDENCE OF THE RENEWAL B.T. IS FOUND. A 46" B. OAK IS NOW A CLEAR ROOT-HOLE DEPRESSION, THE APPROX. CENTER WHICH BEARS N58 1/2° W, 43 1/2 FEET DISTANT (AS PER RECORD).

RENEWAL

Monument Set (Procedure and Description)

Monument Detail

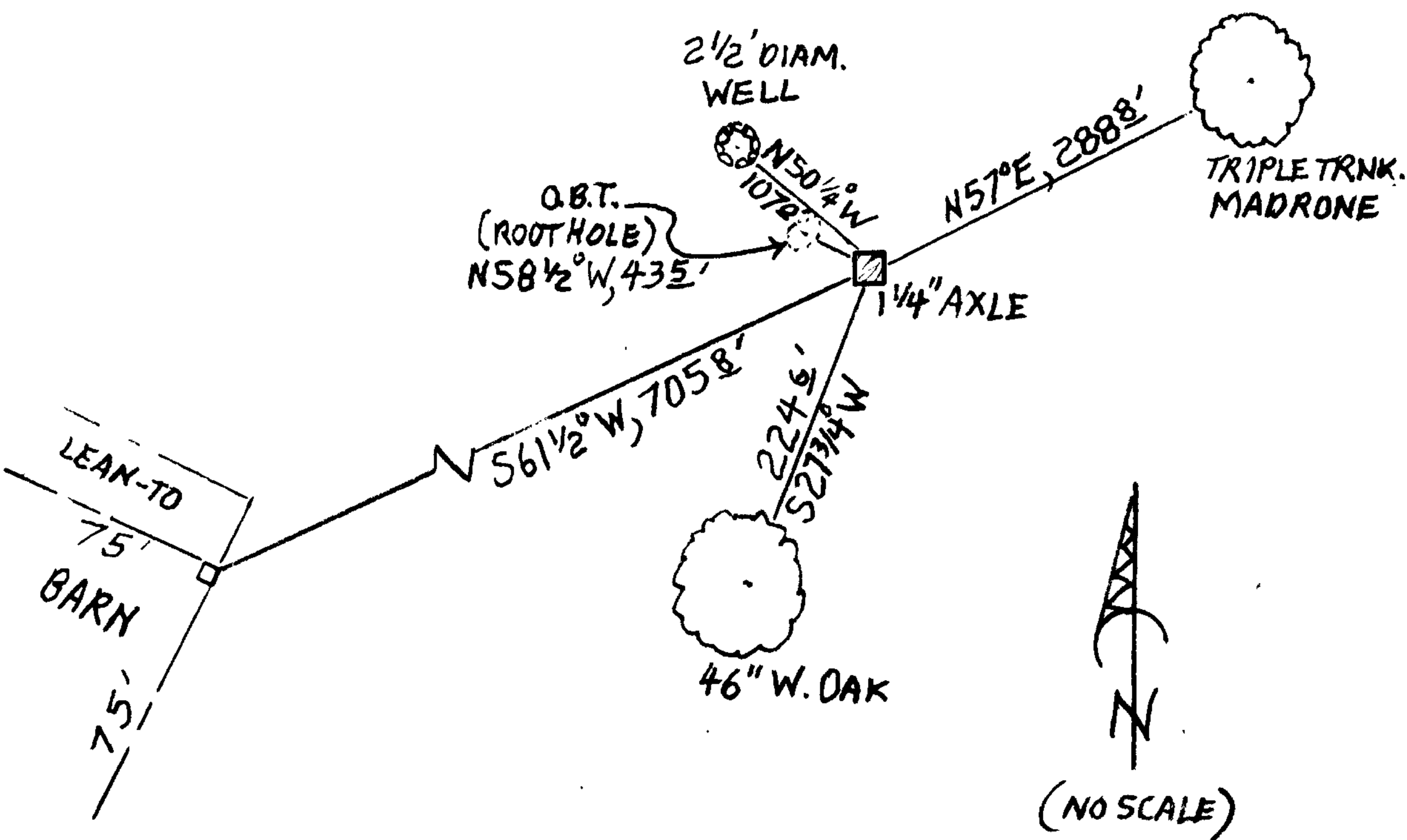
MONUMENT IS SUBSTANTIAL AND SOLID WE DO NOT ALTER.

N/A

New Accessories

A TRIPLE TRUNK MADRONE WITH TRUNKS AVERAGING 28 INCHES IN DIAM. IS SCRIBED "WSW DLC 49 CS" "BT" ON A DOUBLE BLAZE ON THE MOST WESTERLY TRUNK. THE C.R.C. BEARS N57°E, 2888 FEET DISTANT. A 46 INCH DIAM. WHITE OAK (TRIPLE TRUNK BUT NOT FULLY SEPERATE UNTIL ABOVE 5 FT.) IS SCRIBED "WSW DLC 49 CS" "BT" ON A DOUBLE BLAZE ON THE MOST NORTHERLY TRUNK. THE C.R.C. BEARS S27 3/4° W 224 1/2 FEET DISTANT. THE MAIN NORTHEAST (I.E. MOST EASTERLY) CORNER POST OF A 75 FT. X 75 FT. BARN BEARS S61 1/2° W, 705 1/2 FEET DISTANT. THE CENTER OF 2 1/2 FOOT DIAMETER, CIRCULAR, COBBLE LINED WELL (WELL IS MOSTLY EARTH FILLED AND IS NOW APPROX. 3 FEET DEEP) BEARS N50 1/4° W, 107 1/2 FEET DISTANT.

Sketch of Monument, Aecessories, and General Area



Location & Comments

MONUMENT IS NEAR TOP OF A LOW SW'LY RUNNING RIDGE IN OPEN PASTURE LAND. A SEASONAL, SOUTHERLY RUNNING, STREAM IS EAST APPROX. 480 FEET.

Comp. Declin. 15 1/2° E  
Agency D.C.S.O.  
Party Chief STEPHEN JOHN FLAUSE  
Notekeeper Stephen John Flause  
Witnesses M. S. KOCH

Address

Surveyor's Seal

REGISTERED PROFESSIONAL LAND SURVEYOR

Renewal - 6-30-2013

OREGON JULY 25, 1990 RANDALL W. SMITH 2400