

GOVERNMENT CORNER RESTORATION FORM

Township 22 S Range 07 W Sec. 19 County DOUGLAS

State OREGON Date JULY 2, 2012 No. 200300

Corner Designation

519	520
530 | 529

- Condition Report Only
- Not Found
- Renewed
- Unrecorded
- Surveyed In
- Referenced Out

Previous Renewals 1931, 1934, 1947, 1961, 1963

Monument(s) Found: (Condition and Source)

N/A

AT A LOCATION DETERMINED BY THE FOUND ACCESSORIES (SEE BELOW) IS AN APPROX. 1+ INCH DIAMETER 1/2 FOOT DEEP HOLE IN THE SAND-STONE BEDROCK (OR A LARGE BURIED BOULDER). THE ENTIRE PERIMETER OF THE FOUND HOLE, TO ANY DEPTH INSPECTED, IS ENCRUSTED WITH RUST INDICATING PROLONGED CONTACT WITH IRON METAL. THE HOLE IS LOOSELY FILLED WITH CONSTRUCTION GRAVEL AND ITS TOP IS APPROX. 4 INCHES BELOW GROUND SURFACE.

ALL EVIDENCE FOUND INDICATES ABOVE FOUND HOLE ONCE CONTAINED 1" X 1" X 36" REINFORCING BAR SET IN 1931. THIS IRON BAR AND 1961 NOTED 3/4" IRON PIPE WERE REMOVED DURING RECENT REBUILD OF ELK CREEK BRIDGE.

Accessories Found:

FILED

Date: 7-16-2012 By: JC

This survey consists of:

Map: _____

Narrative: _____

Corner Api. CS 67/3615

DOUGLAS COUNTY SURVEYOR

NO EVIDENCE OF ORIGINAL 1855 BEARING TREES FOUND.
 POSSIBLE EVIDENCE OF TWO 1931 RENEWAL BEARING TREES. A B. OAK 30" DIA. NOW A FALLEN AND MOSTLY ROTTED AWAY 30+ INCH DIAMETER BLACK OAK WITH NO REMAINING BLAZE EVIDENCE, IS FALLEN AND OUT OF POSITION BUT ITS POSSIBLE ROOTHOLE BEARS S38°E, 186± FEET DISTANT (AS PER RECORD). A B. OAK 20" DIA. NOW A POSSIBLE ROOTHOLE DEPRESSION BEARS N63°W, 78± FEET DISTANT (AS PER RECORD).
 ONE 1934 RENEWAL B.T. FOUND. A 26" R. FIR NOW A 40 INCH D.B.H. DOUGLAS FIR WITH A FULLY HEALED SINGLE BLAZE; BEARS N24 3/4° W, 88± FEET DISTANT (AS PER RECORD, 1960'S MEASUREMENTS ARE CLOSE TO SLICE DISTANCE).
 ONE 1961 RENEWAL B.T. FOUND. AN 18" W. OAK NOW A 25 INCH D.B.H. WHITE OAK WITH A FULLY HEALED DOUBLE BLAZE; BEARS S60° W, 59± FEET DISTANT (AS PER RECORD).
 ABOVE NOTED 1934 RENEWAL FIR AND 1961 RENEWAL OAK REMAIN FROM 1963 RENEWAL.

C.S. File No 67/3615

RENEWAL

Monument Detail

Monument Set (Procedure and Description)

DOUGLAS CO.

2012
SURVEYOR

ALL FOUND EVIDENCE INDICATES FOUND RUST ENCRUSTED HOLE IN SANDSTONE BEDROCK IS THE LOCATION OF THE 1934 SECTION CORNER MONUMENT WHICH HAD DIRECT EVIDENTIARY TIES BACK TO THE ORIGINAL CORNER.

WE REFERENCE OUT POSITION OF FOUND HOLE AND ATTEMPT TO SET A BRASS CAP MONUMENT. SANDSTONE BECOMES M/L IMPENETRABLE AT A DEPTH OF 8 TO 10 INCHES AND WE SET AN IRON ROD AND ALUMINUM CAP MONUMENT IN WHAT REMAINS OF FOUND HOLE.

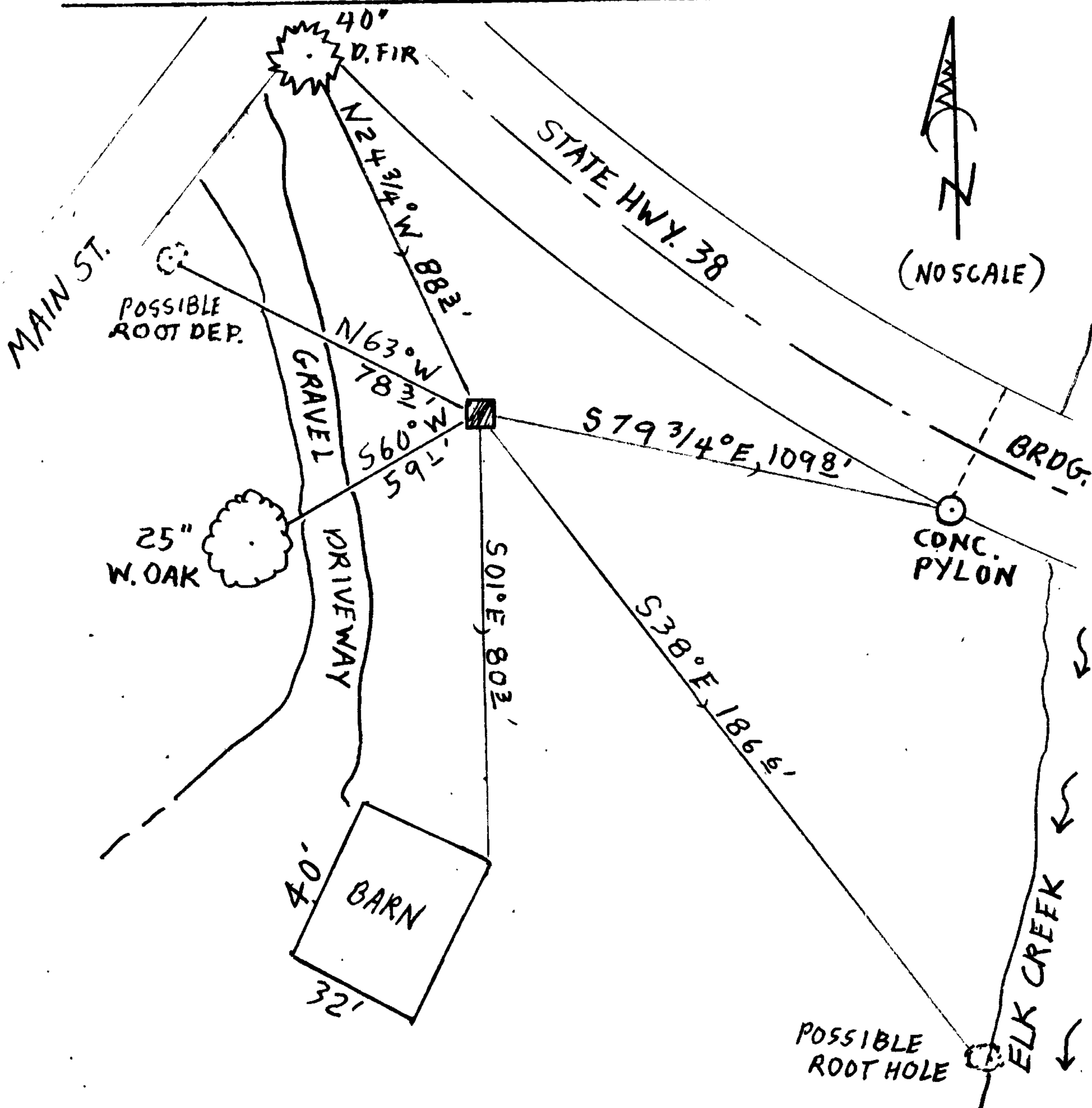
NEW MONUMENT (AS ESTB. ABOVE) IS A 1 1/2 INCH DIAMETER ALUMINUM CAP (MARKED AS AT RIGHT) ON A 5/8 X 30 INCH REBAR FIRMLY AND PLUMBLY SET APPROX. 2 INCHES BELOW GROUND SURFACE.

New Accessories

TIP OF BEAK OF EAGLE CARVED IN NORTHERLY FACE OF DECORATIVE 40 1/2 INCH DIAM. 11 FOOT TALL CONCRETE PYLON AT THE WESTERLY END OF AND ON THE SOUTH SIDE OF THE NEW (IN 2008) HIGHWAY 38 BRIDGE OVER ELK CREEK; BEARS S 79 3/4° E, 109 8 FEET DISTANT.

THE NE CORNER OF THE NE CORNER POST OF A 32 X 40 FOOT SMALL ANIMAL BARN; BEARS S 01° E, 80 3 FEET DISTANT.

Sketch of Monument, Accessories, and General Area

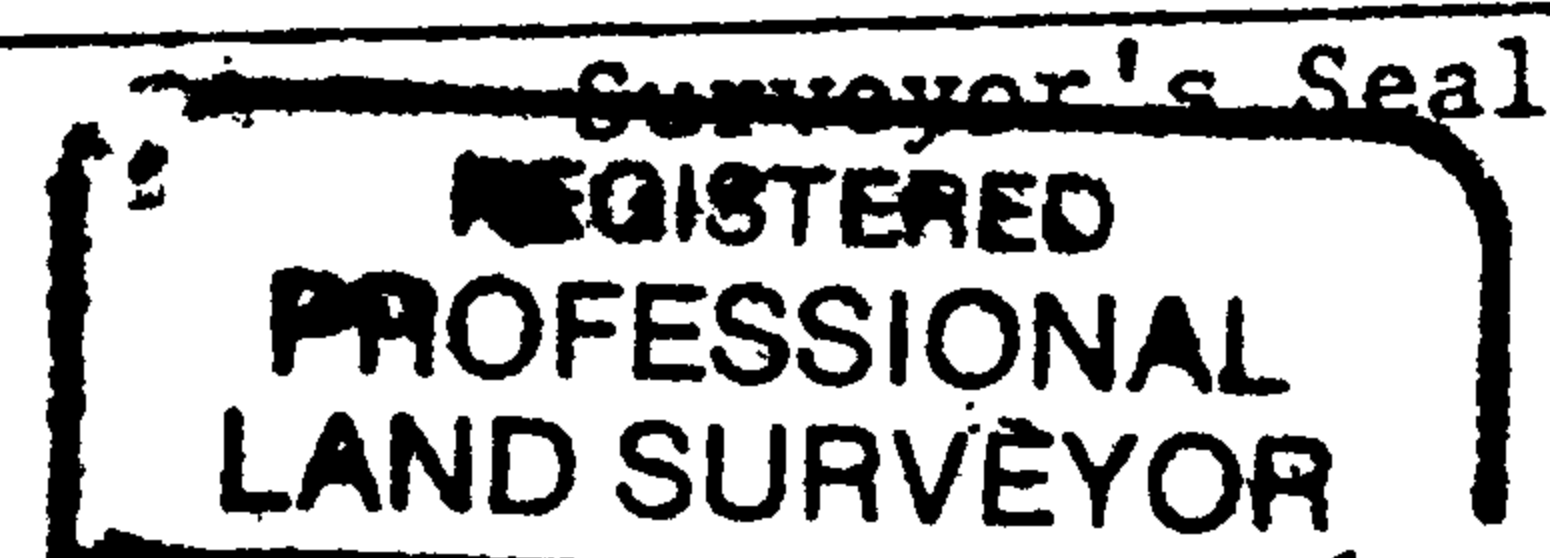


Location & Comments

MONUMENT IS ON GENTLE SE'LY SLOPE JUST SOUTH OF SOUTHERLY FILL-SLOPE OF STATE HIGHWAY 38 AND APPROX. 100 FT. SE'LY FROM MAIN STREET, ELKTON.

Comp. Declin. 15 3/4° E
Agency PCSD
Party Chief STEPHEN JOHN FLAUSE
Notekeeper Stephen John Flause
Witnesses MIKE S. KOCH

Address



Signature
JANUARY 6 - 30 - 2013

