

GOVERNMENT CORNER RESTORATION FORM

FILED

Date: 6/14/2012 By: JC
This survey consists of:

Township 28S Range 06W Sec. 07

County DOUGLAS Map: _____

State OREGON Date JUNE 12, 2012

No. 040050 Corner Rpt: CS 67/36-11

Corner Designation

INT. L

DLC
40

DOUGLAS COUNTY
SURVEYOR

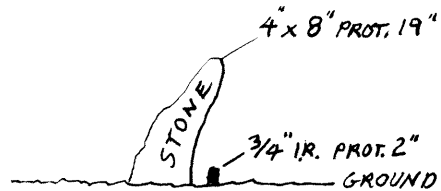
- Condition Report Only
- Not Found
- Renewed
- Unrecorded
- Surveyed In
- Referenced Out

Previous Renewals 2002, 2008 (DCSO)

Monument(s) Found: (Condition and Source)

AN UNMARKED STONE AND A 3/4 INCH DIAM. IRON ROD, UNDISTURBED AND AS DESCRIBED IN THE 2002 AND 2008 RENEWALS.

MONUMENT DETAIL



Accessories Found:

(ALL MEASUREMENTS TO TOP CENTER OF STONE MON.)

FROM THE 2008 DCSO RENEWAL THE TWO REFERENCES ARE FOUND. THE NORTHWEST CORNER OF A STEEL SIDED SHOP (MEASURES 40' X 59') IS NO LONGER HERE (CURRENT PROPERTY OWNER SAYS SHOP WAS DISMANTLED AND REMOVED). THE NORTHWEST CORNER OF THE REMAINING FOUNDATION SLAB (SEE NEW ACCESSORIES FOR FURTHER DESCRIPTION); BEARS S33 1/2° E, 20.0 FEET DISTANT (AS PER RECORD).

AN 18" DIA. W. OAK NOW AN 18 INCH (DIAM. MEASURED APPROX 3 FT ABOVE GROUND) WHITE OAK, WITH A PARTIALLY HEALED DOUBLE BLAZE, SCRIBED "DLC 40 CS" "BT"; BEARS S57 1/2° W, 39 FEET DISTANT (RECORD S60° W, 4 1/2 FT.).

A POWER POLE A1011, 4" DIA. WE FIND TO BE A 10 INCH D.B.H. POWER POLE MARKED "2A" "10" "1L"; BEARS N44° W, 31 1/2 FEET DISTANT (AS PER RECORD).

C.S. File No 67/36-11

RENEWAL

Monument Set (Procedure and Description)

Monument Detail

MONUMENT IS ACCEPTED AS FOUND

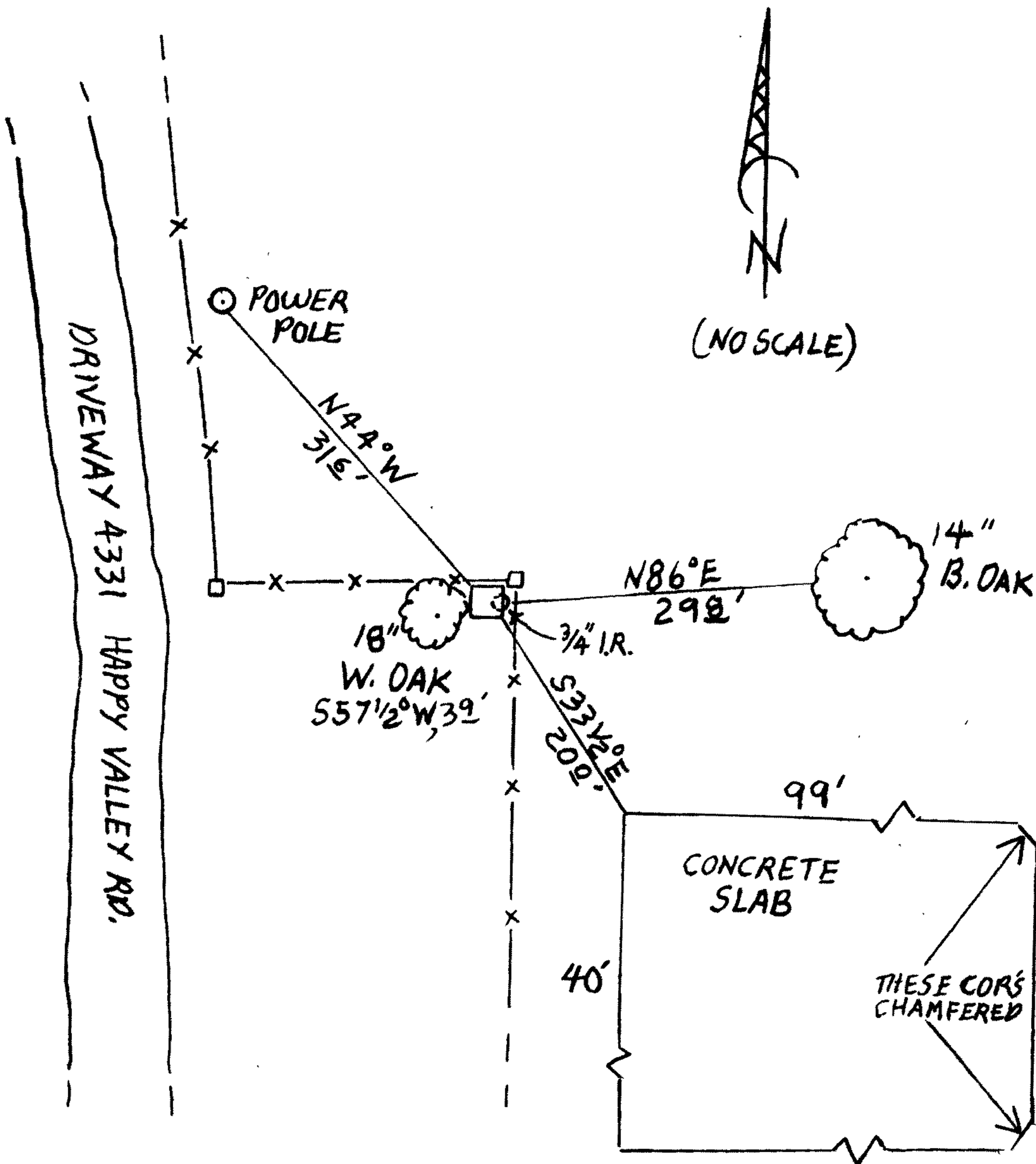
N/A

New Accessories (MEASUREMENTS TO TOP CENTER OF STONE MONUMENT)

A 14 INCH D.B.H. BLACK OAK SCRIBED "INT L D.C. 40 CS" "BT"; BEARS N86°E, 298 FEET DISTANT.

A CONCRETE FOUNDATION SLAB (SEE PREVIOUSLY DESCRIBED 2008 SHOP CORNER) MEASURING 40 X 99 FEET AND MORE/LESS FLUSH WITH GROUND; BEARS S33 1/2°E, 20° FEET DISTANT (AS PREVIOUSLY NOTED).

Sketch of Monument, Accessories, and General Area



Location & Comments

MONUMENT IS ON FLAT GROUND IN A SMALL STAND OF OAK AND ASH TREES JUST NORTH OF HAPPY VALLEY RD (CO. RD. # 26) AND SOUTH AND EAST OF A LARGE PASTURE.

Comp. Declin. 15 1/2° E

Agency DCSD

Party Chief STEPHEN JOHN FLAUSE

Notekeeper Stephen John Flause

Witnesses MIKE S. KOCH

Address

Surveyor's Seal

REGISTERED PROFESSIONAL LAND SURVEYOR

Renewal 6-30-2012

OREGON JULY 25, 1990 RANDALL W. SMITH 2400