

GOVERNMENT CORNER RESTORATION FORM

Date: 6/1/2012 By: X

This survey consists of:

Township 285 Range 7W Sec. 12 County DOUGLAS Map: _____

State OREGON Date MAY 30, 2012 No. 038030 Narrative: _____
Corner Rpt: CS67/36-5

Corner Designation

DLC
38
DLC
39

DOUGLAS COUNTY
SURVEYOR

- Condition Report Only
- Not Found
- Renewed
- Unrecorded
- Surveyed In
- Referenced Out

MONUMENT DETAIL

N/A

Previous Renewals DCSO SURVEY (M 25-47) (NOT FILED AS A RENEWAL)

Monument(s) Found: (Condition and Source)

AN APPROX. 10X10 INCH SANDSTONE, FIRMLY SET AND PROTRUDING 5 INCHES ABOVE GROUND. CENTER TOP OF SANDSTONE IS MARKED WITH RECENTLY ETCHED 2X2 INCH "X".

1918 SURVEY, M25-47, CITES PAROL. EVIDENCE AS A BASIS FOR ACCEPTING THIS CORNER POSITION. THE ORIGIN OF THE MONUMENT IS UNKNOWN. (SEE VOL 3 PG 48)

(ALL MEASUREMENTS FOLLOWING ARE MADE FROM "X" AT CENTER TOP OF MONUMENT.)

Accessories Found:

AN APPROX. 6X9 INCH SANDSTONE, FIRMLY SET AND PROTRUDING 7 INCHES ABOVE GROUND, BEARS NORTH, 322.55 FEET (REC. ORD NORTH, 4.88 CHAINS). THIS STONE IS IDENTIFIED AS MARKING THE SOUTHEAST CORNER OF DLC 40 IN THE 1918 SURVEY. THE ORIGIN OF THIS MONUMENT IS UNKNOWN.

RENEWAL

Monument Set (Procedure and Description)

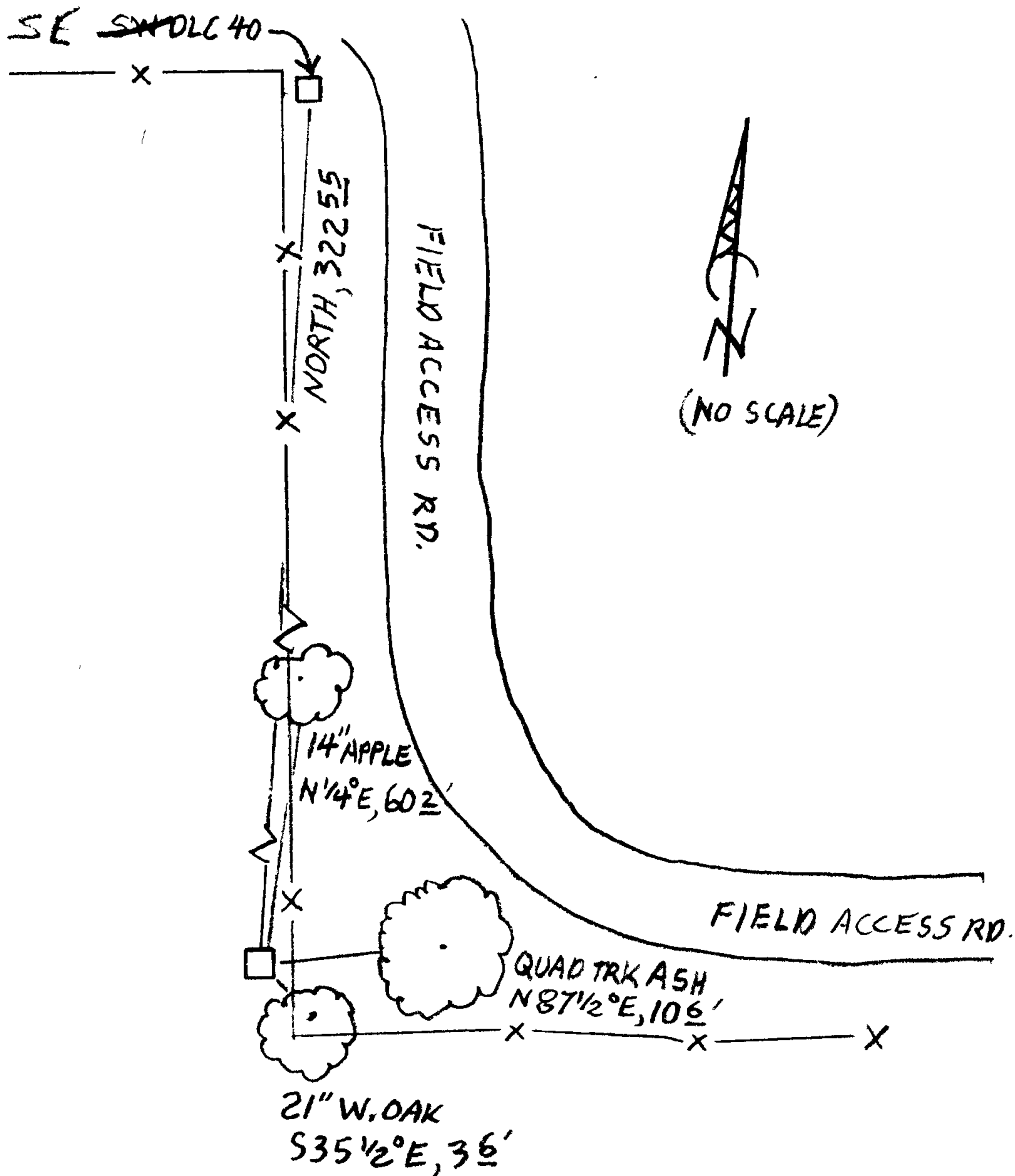
Monument Detail

N/A

THE MONUMENT IS SOLID, FLUMB, AND APPEARS UNDISTURBED. WE PLACE AN IRON ROD ALONG EDGE (SEE BELOW) TO AID IN FUTURE LOCATING.

New Accessories AN APPLE 14 INCH D.B.H NOT SCRIBED (BUT TAGGED WITH ALUM. BT TAG) BEARS N 0 1/4 E, 60 2 FEET DISTANT. A QUADRUPLE TRUNKED ASH WITH EACH TRUNK MEASURING CLOSE TO 22 INCHES D.B.H. IS SCRIBED "SW DLC 38 CS" "BT" ON A DOUBLE BLAZE ON THE MOST WESTERLY TRUNK. THE CENTER OF THE COMBINED ROOT CROWN OF THE FOUR TRUNKS BEARS N 87 1/2 E, 10 6 FEET DISTANT. A 21 INCH D.B.H. WHITE OAK SCRIBED "X" "CSBT" ON A HIGH-LOW DOUBLE BLAZE BEARS S 35 1/2 E, 3 6 FEET DISTANT. (THIS TREE IS A CORNER POST FOR FENCES RUNNING NORTH AND EAST 'LY. A 5/8 INCH DIAM. 30 INCH LONG IRON ROD WITH A CENTER-PUNCHED 1 1/2 INCH DIAMETER ALUMINUM CAP MARKED "DOUGLAS CO. SURVEYOR" SET PROTRUDING APPROX. 2 INCHES ABOVE GROUND ON THE NORTH EDGE OF THE STONE MONUMENT BEARS NORTH, 0 5 FEET DISTANT.

Sketch of Monument, Accessories, and General Area



Location & Comments

MONUMENT IS AT EASTLY EDGE OF VERY LARGE PASTURE AND APPROX. 1 FOOT WEST FROM A NORTH-SOUTH FENCELINE. A FENCE CORNER FOR FENCES RUNNING NORTH AND EASTERLY IS JUST SOUTHEAST OF MONUMENT (SEE BT DESC.).

Comp. Declin. 15 1/2 E
Agency DCSO
Party Chief STEPHEN JOHN FLAUSE
Notekeeper Stephen John Flause
Witnesses MIKE S. KOCH

Address

Surveyor's Seal

REGISTERED PROFESSIONAL LAND SURVEYOR

Randall W. Smith
6-30-2012 RENEWAL

OREGON
JULY 25, 1990
RANDALL W. SMITH
2400