

GOVERNMENT CORNER RESTORATION FORM

Date: 3-12-2012 By: JC

This survey consists of:

Township 22 S Range 05 W Sec. 18

County DOUGLAS Map: \_\_\_\_\_

State OREGON Date FEB. 2, 2012

No. 100440 Corner Rpts CS 67/36-4

Corner Designation

$\frac{1}{4}$   
S13 | S18

DOUGLAS COUNTY SURVEYOR

- Condition Report Only
- Not Found
- Renewed
- Unrecorded
- Surveyed In
- Referenced Out

Previous Renewals 1959, 1976

Monument(s) Found: (Condition and Source)

FROM 1976 RENEWAL:  
 A 2 1/2 INCH DIAMETER BRASS CAP (MARKED AS AT RIGHT) ON A 1 INCH I.D. IRON PIPE IS FIRMLY SET, PROTRUDING 3 INCHES ABOVE GROUND.  
 ON THE NORTH EDGE OF THE B.C. MONUMENT IS A CHANNEL IRON (ORIGINAL SOURCE UNKNOWN) FIRST DESCRIBED AS MEASURING 1" X 3 FT IN 1959 RENEWAL; WE MEASURE THE EXPOSED PORTION AS 1 1/2 X 2 INCHES AND PROTRUDING 7 INCHES ABOVE GROUND.

FOUND MONUMENTS ARE IN NORTH-SOUTH FENCE COMPOSED OF METAL POSTS, WIRE AND BARBED WIRE

Accessories Found:

EVIDENCE OF ONE D.B.T FOUND. A B. OAK 18" DIA. NOW A 2 FOOT DIA-METER 2 FOOT TALL VERY ROTTEN OAK STUMP; BEARS N 14 3/4° E, 237 6 FEET DISTANT (RECORD N 16 1/2° E, 237 6 FT.)

EVIDENCE OF THE TWO 1959 RENEWAL BEARING TREES FOUND. A 7" B. OAK NOW A 27 INCH D.B.H. BLACK OAK WITH A FULLY HEALED DOUBLE BLAZE; BEARS N 8 1/2° E, 198 FT DISTANT (AS PER RECORD)

A 15" B. OAK NOW A VERY ROTTEN AND FALLEN ON FACE APPROX. 14 INCH DIAMETER, 10 FOOT LONG OAK STUMP (BLZ. SIDE HIDDEN); BEARS N 20° W, 168 2 FEET DISTANT (RECORD N 18 1/2° W, 168 2 FT.)

ABOVE BEARINGS ARE MEASURED AWAY FROM MAGNETIC INFLUENCE OF FENCE LINE WHICH MAY ACCOUNT FOR 1959 RECORD DISCREPANCIES.

MONUMENT DETAIL

DOUGLAS COUNTY SURVEYOR  
T 22 S

R		R
6	S13   S18	5
W	$\frac{1}{4}$	W
	1976	

RENEWAL

Monument Set (Procedure and Description)

Monument Detail

N/A

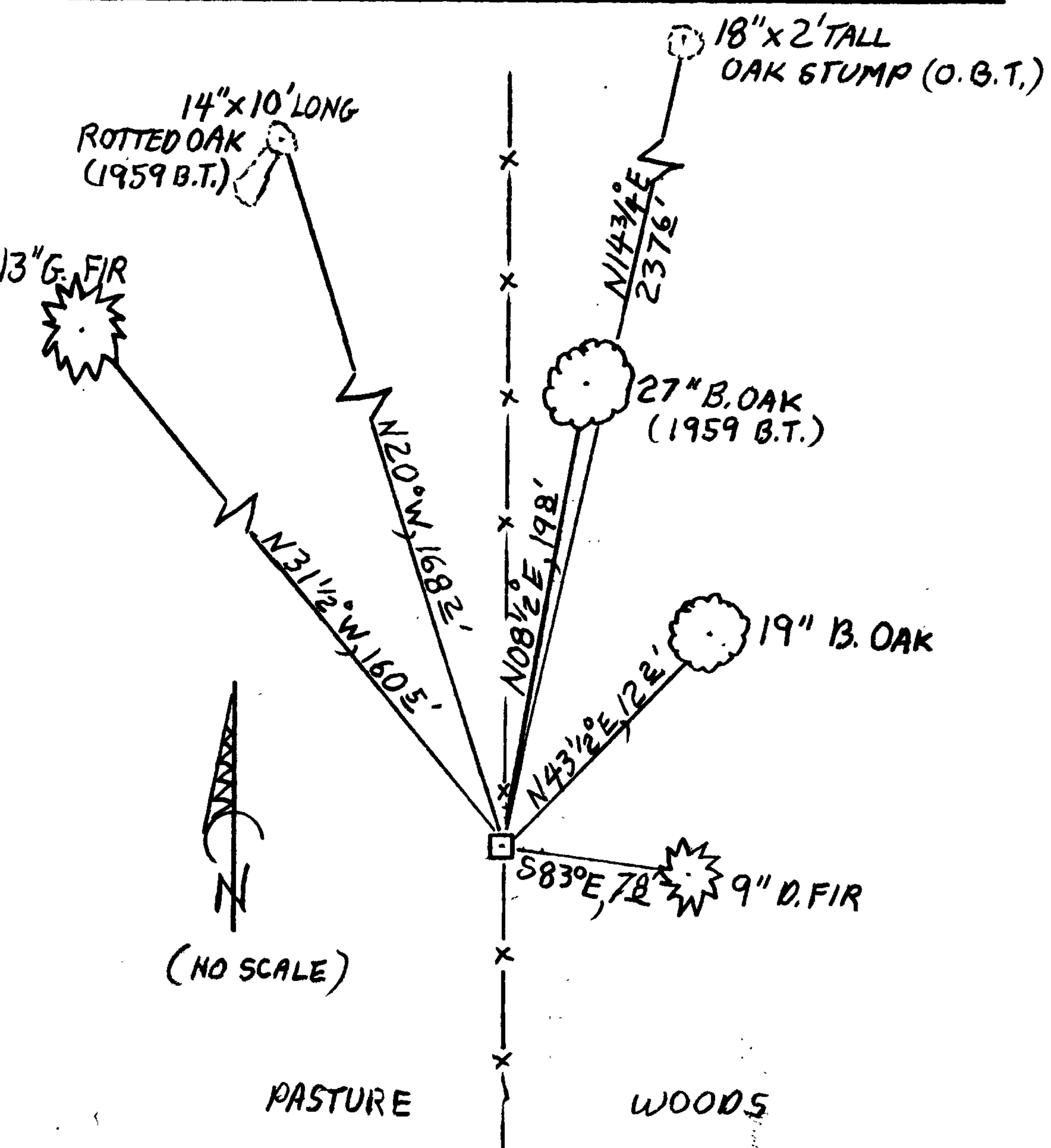
N/A

New Accessories

- A 19 INCH D.B.H BLACK OAK SCRIBED "R6W 1/4 S18 CS" "BT" ON A DOUBLE BLAZE; BEARS N43 1/2° E, 12 1/2 FEET DIST.
- A 9 INCH D.B.H. DOUGLAS FIR SCRIBED "1/4 S18" "CS BT" ON A DOUBLE BLAZE; BEARS S83° E, 7 1/2 FEET DISTANT.
- A 13 INCH D.B.H GRAND FIR SCRIBED "1/4 S13 CS" "BT" ON A DOUBLE BLAZE; BEARS N31 1/2° W, 160 1/2 FEET DISTANT.

Sketch of Monument, Accessories, and General Area

Location & Comments



MONUMENT IS IN NORTH-SOUTH  
FENCELINE AT EAST EDGE OF A  
WOODLAND AND WEST EDGE OF  
ROLLING PASTURELAND.  
MONUMENT IS APPROX 250 FT.  
NORTH OF ELABORATE GATEWAY AT  
SOUTH END OF RUSTIC LANE.

Comp. Declin. 15 3/4° E  
Agency D.C.S.D.  
Party Chief STEPHEN JOHN FLAUSE  
Notekeeper Stephen John Flause  
Witnesses MIKE S. KOCH

Address

Surveyor's Seal  
REGISTERED  
PROFESSIONAL  
LAND SURVEYOR

*Signature*  
RENEWAL 6-30-2013

OREGON  
JULY 25, 1990  
RANDALL W. SMITH  
2468