

GOVERNMENT CORNER RESTORATION FORM

Date: 3-12-2012 By: JC

Township 22S Range 05W Sec. 4

County DOUGLAS This survey consists of:

State OREGON Date JAN. 9, 2012

No. 340640 Narrative: _____

Corner Rpt: CS67/36-2

Corner Designation

C 1/4
+

DOUGLAS COUNTY

SURVEYOR

Condition Report Only

Not Found

Renewed

Unrecorded

Surveyed In

Referenced Out

MONUMENT DETAIL

Previous Renewals 1959, 1980

Monument(s) Found: (Condition and Source)

N/A

ORIGINAL 1924 COLE 1 1/2" x 40" IRON PIPE NOW 1 1/2 INCH O.D. IRON PIPE PROTRUDING APPROX. 8 INCHES ABOVE GROUND. TOP 6 INCHES OF PIPE IS VERY RUSTED AND LEANING SLIGHTLY TO NORTHEAST. AFTER REFERENCING PLUMB POSITION OF PIPE, AND REMOVING IT FROM GROUND, OVERALL LENGTH IS FOUND TO BE APPROXIMATELY 40 INCHES (AS PER RECORD).

LOT MARKER AS SET BY HAINES IN 1959 RENEWAL A 1 X 1 INCH "T" IRON, MISSING ITS IDENTIFYING BRASS WASHER, SET IN THE CENTER OF A 1 1/2 INCH I.D. IRON PIPE PROTRUDING 3 INCHES ABOVE GROUND BEARS N 10° W, 56 2/3 FT. DIST. FROM ABOVE 1924 MONUMENT (1980 RECORD FROM DEAN FILED ROBERT DEAN MAP M83-16 A&B; N 10° 33' W, 56 2/8 FT.).

Accessories Found:

TWO 1924 D.B.T.S.: A MAPLE 10" DIA. NOW A 21 INCH D.B.H. MAPLE WHICH IS OPENED TO FIND A POSSIBLE "4" ON PARTIAL REMAINS OF A ROTTEN FACE THAT IS 85+ YEARS INSIDE TREE. TREE BEARS S 49° W, 30 FEET TO C.R.C. (RECORD S 70° W 30 FT. (GOOD TO FACE)). A FIR 16" NOW A 33 INCH D.B.H. SAWN 6 FOOT TALL ROTTEN DOUGLAS FIR STUMP WITH "1/4" AND A PARTIAL "C" VISIBLE ON A PREVIOUSLY OPENED BLAZE; BEARS N 16° E, 107 2/3 FEET DISTANT (B. AND D. AGREE WITH 1980 MEASUREMENT, DISTANCE TO FACE AGREES WELL WITH 1924 DISTANCE).

THE BEARING TREE WHICH REFERENCED HAINES 1959 MONUMENT A 2 FT. D. FIR NOW A 33 INCH D.B.H. 6 FOOT TALL, SAWN DOUGLAS FIR STUMP WITH A GALVANIZED METAL CAP. THIS STUMP IS PISTOL-BUTTED AND PARTIALLY ROTTED WITH NO APPARENT BLAZE MARKS. FROM THE 1924 COLE MONUMENT IT BEARS N 23 1/2° E 31 1/2 FT. (COMBINED HAINES AND DEAN RECORD OF N 22° E, 31 2/3 FT. DISTANT AGREES WELL CONSIDERING PISTOL-BUTT NATURE OF STUMP).

RENEWAL

Monument Set (Procedure and Description)

Monument Detail

THE PLUMB POSITION OF THE FOUND 1924 COLE 1 1/2 INCH IRON PIPE MONUMENT IS REFERENCED OUT AND REMOVED, IN ITS PLACE IS SET A 2 3/8 INCH DIAM. BRASS CAP (MARKED AS AT RIGHT) ON A 1 INCH I.D. X 30 INCH GALVANIZED IRON PIPE. THE B.C. MONUMENT IS SET PLUMB AND PROTRUDING 1 INCH FROM A ROUGH MOUND OF STONE. THE FOUND 1 1/2 INCH IRON PIPE IS SET ON THE SOUTH EDGE OF, AND 3/4 INCH LOWER THAN, THE B.C. MONUMENT.

DOUGLAS COUNTY SURVEYOR
T22S R6W
C1/4 S4
+
COLE 1924
2012

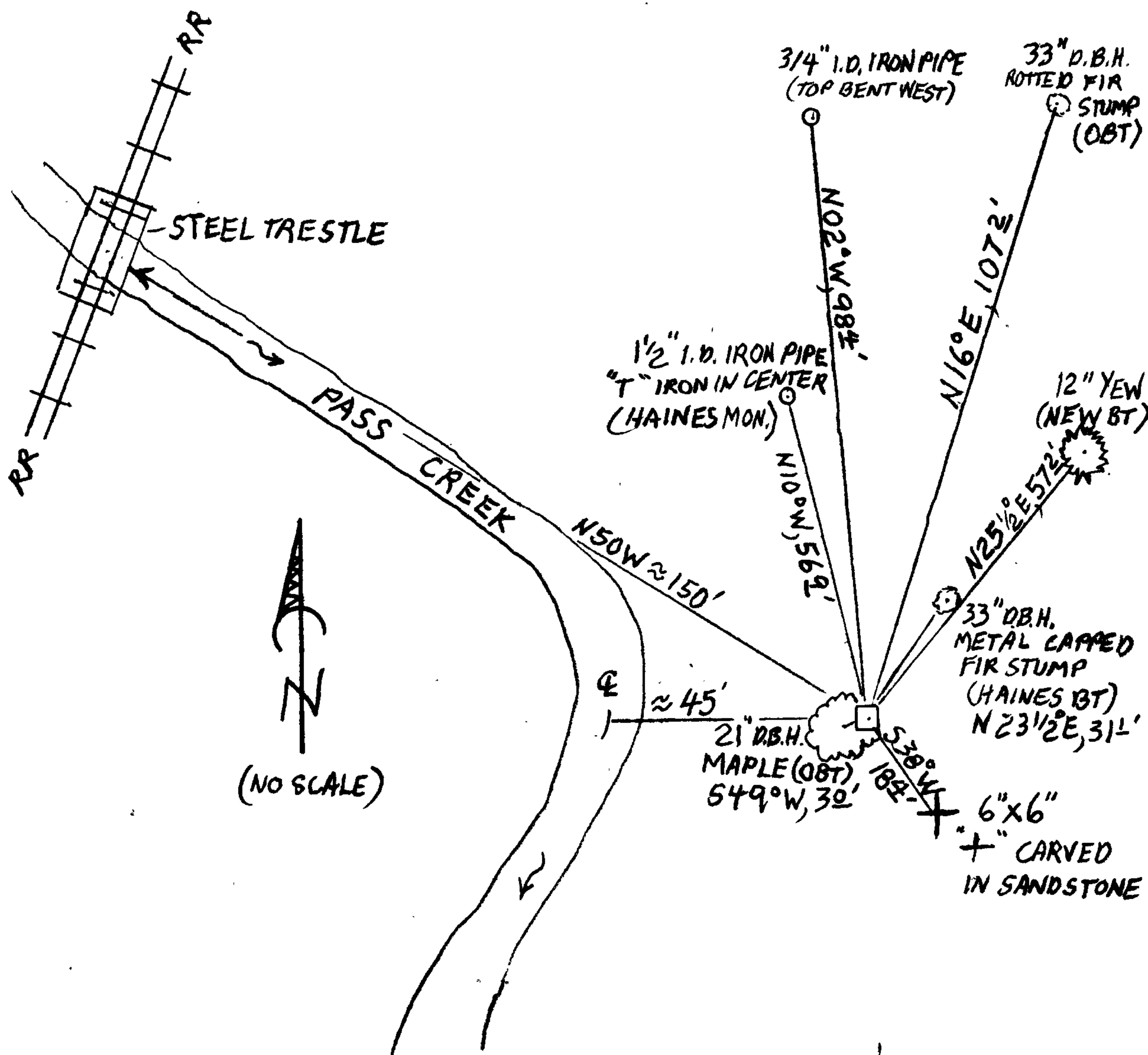
New Accessories

A 12 INCH D.B.H. YEW SCRIBED "C1/4 S4 CS" "BT" ON A DOUBLE BLADE BEARS N25 1/2 E, 57 1/2 FEET DISTANT.

A 6x6 INCH "+" SCRIBED IN A VERTICAL SANDSTONE OUT-CROP NEAR THE TOP OF A WEST FACING BLUFF, 16 FEET HIGHER THAN THE B.C. MONUMENT, BEARS S38 E, 18 1/4 FEET DISTANT.

A 3/4 INCH I.D. IRON PIPE (THE TOP 2 FEET OF WHICH IS BENT OVER N85 W), BEARS N02 W, 98 1/4 FEET DISTANT (AGREES WITH RECORD FOR PROPERTY CORNER "F" ON 1980 ROBERT DEAN MAP M83-16 A&B)

Sketch of Monument, Accessories, and General Area



Location & Comments

MONUMENT IS NEAR BOTTOM OF A STEEP WESTERLY FACING SLOPE, APPROX. 10 FEET ABOVE THE FLOOD PLANE OF AND APPROX. 45 FEET EAST FROM THE C OF PASS CREEK.

Comp. Declin. 15 3/4 E
Agency DCSD
Party Chief STEPHEN JOHN FLAUSE
Notekeeper Stephen John Flause
Witnesses MIKE S. KOCH

Address

Surveyor's Seal
REGISTERED
PROFESSIONAL
LAND SURVEYOR

Randall W. Smith
Renewed 6-30-2013

OREGON
JULY 25, 1990
RANDALL W. SMITH
2488