

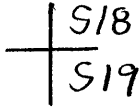
GOVERNMENT CORNER RESTORATION FORM

Date: 11/29/2011 By: JC  
This survey consists of:

Township 27S Range 05W Sec. 18 County DOUGLAS  
State OREGON Date OCT 24, 2011 No. 100400 Corner Rpt: CS 67/33-45

Corner Designation

DOUGLAS COUNTY SURVEYOR



- Condition Report Only
- Not Found
- Renewed
- Unrecorded
- Surveyed In
- Referenced Out

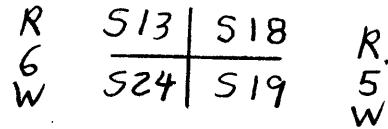
Previous Renewals 1936, 1966, 1987

MONUMENT DETAIL

Monument(s) Found: (Condition and Source)  
 A 2 1/2 INCH DIAMETER BRASS CAP (MARKED AS AT RIGHT) ON A 1 1/4 INCH O.D. X 36 INCH LONG IRON PIPE. BC MONUMENT PROTRUDES APPROX. 2 FEET ABOVE GROUND. THE IRON PIPE IS SHARPLY BENT NEAR ITS MIDDLE AND THE MONUMENT LEANS SOUTHWESTERLY APPROX. 1 1/2 FEET OUT OF PLUMB.  
 BELOW PLUMB POSITION OF FOUND BC, AT A DEPTH OF 30 INCHES IS FOUND THE TOP OF A FIRM AND PLUMBLY SET 1/2 X 1 1/2 INCH IRON BAR (AS DESCRIBED IN 1936 RENEWAL). IT IS DETERMINED THAT WHAT HAD BEEN DESCRIBED AS AN UNRECORDED 1/2 X 4 INCH IRON BAR IN THE 1987 RENEWAL WAS THE EDGE OF AN OTHERWISE BURIED 8 X 6 3/4 INCH DRAFT HORSE SHOE (WE REMOVE TO AVOID FUTURE CONFUSION).  
 Accessories Found:

COUNTY SURVEYORS OFFICE

T 27 S



1966

NO B.T.'S FOUND. NO 1936 BEARING TREES FOUND.

TWO 1966 RENEWAL REFERENCES ARE FOUND. A 13" B.O. NOW A 26 INCH M.B.H. BLACK OAK WITH FULLY HEALED DOUBLE BLAZE BEARS S 02° E, 159 1/2 FEET DISTANT (AS PER RECORD). BEACON TOWER ON MOUNT NEBO BEARS S 64° 1/2° W (AS PER RECORD). TV TOWER ON MOUNT ROSE NO LONGER VISIBLE (DUE TO TREE GROWTH ON ELK ISLAND).

TWO 1987 RENEWAL B.T.'S FOUND

A 22" B.O. NOW A 41 INCH D.B.H. (TREE HAD LOW DIVIDED TRUNK, NOW GROWN TOGETHER AS A TALL SINGLE TRUNK) BLACK OAK WITH A FULLY HEALED DOUBLE BLAZE; BEARS N 21° E, 108 3/4 FEET DISTANT (AS PER RECORD). A DOUBLE TRUNKED MAPLE WITH A 6" EASTERLY TRUNK NOW A 22 INCH D.B.H. MAPLE (DOUBLE TRUNK NOW A NEARLY SEAMLESS TALL SINGLE TRUNK) WITH A NOW BARELY VISIBLE FULLY HEALED DOUBLE BLAZE; BEARS S 10° 4' W, 86 1/2 FEET DISTANT (AS PER RECORD). METAL WITNESS POST AND SIGN MISSING.

RENEWAL

Monument Set (Procedure and Description)

Monument Detail

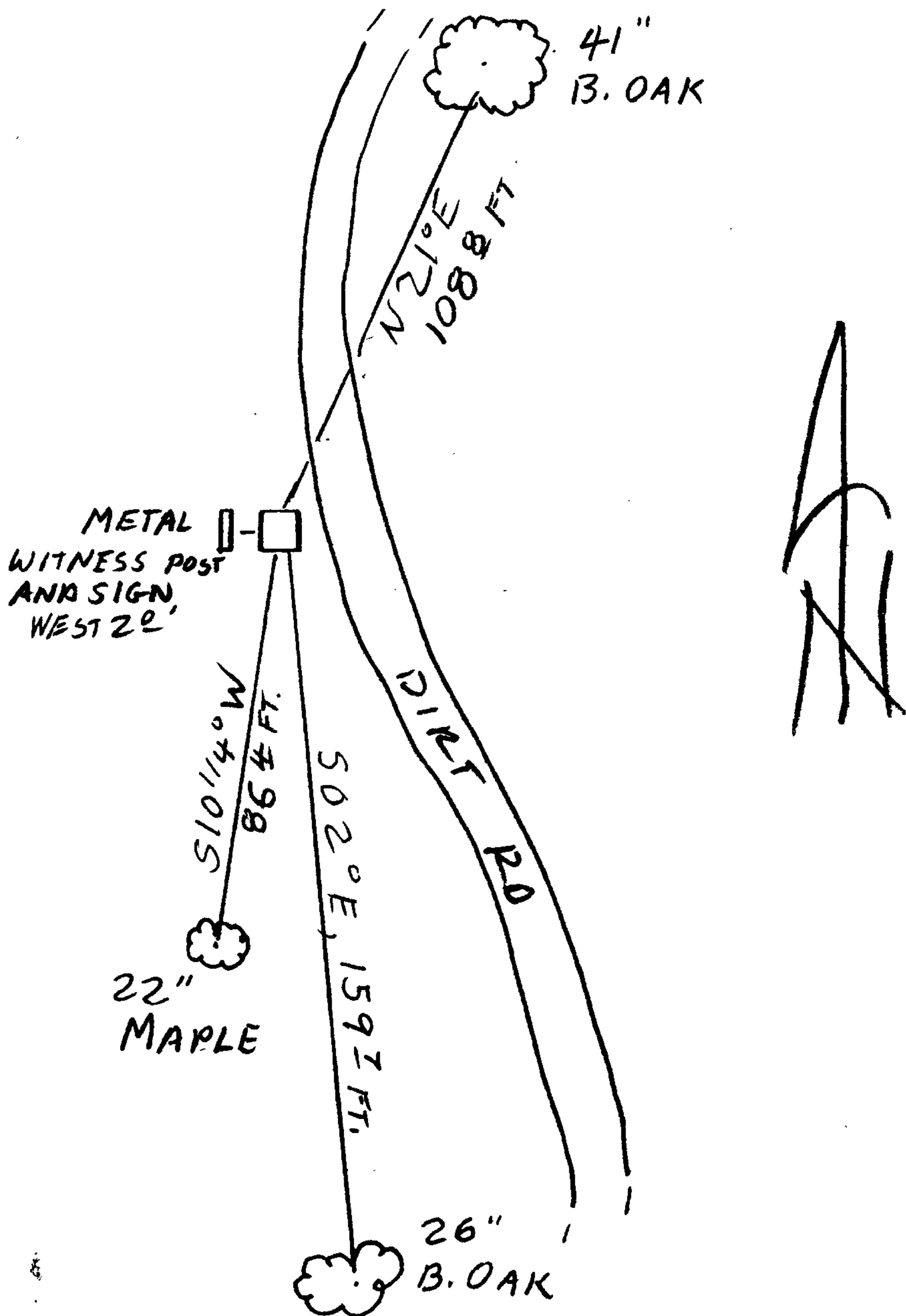
FOUND BC MONUMENT PIPE IS STRAIGHTENED AND THE RESET PLUMB OVER THE FOUND 1936 IRON BAR MONUMENT. BC ON IP NOW PROTRUDES APPROX 6 INCHES ABOVE GROUND

N/A

New Accessories

A NEW METAL WITNESS POST AND SIGN IS SET 2 FEET WEST FROM BC MONUMENT.

Sketch of Monument, Accessories, and General Area



Location & Comments

MONUMENT IS SLIGHTLY SOUTH OF NORTH-SOUTH CENTER OF ELK ISLAND AND APPROX 100 FT EAST FROM WEST HIGH BANK. MONUMENT IS APPROX 20 FEET WEST FROM MAIN DIRT ROAD FOLLOWING NEAR PERIMETER OF ISLAND.

Comp. Declin. 15 3/4° E  
Agency DCSD  
Party Chief STEPHEN JOHN FLAUSE  
Notekeeper Stephen John Flause  
Witnesses M.S. KOCH

Address

REGISTERED PROFESSIONAL LAND SURVEYOR

*Handwritten signature*

OREGON  
JULY 25, 1990  
RANDALL W. SMITH  
2400

Renewed 6-30-2012