

GOVERNMENT CORNER RESTORATION FORM

Date: 10-17-2011 By: JC

Township 22S Range 5W Sec. 13 County DOUGLAS

This survey consists of:

State OREGON Date JULY 20, 2011 No. 600440

Narrative: Corner Rpt: CS 67/33-41

Corner Designation

1/4
514 | 513

DOUGLAS COUNTY

SURVEYOR

- Condition Report Only
- Not Found
- Renewed
- Unrecorded
- Surveyed In
- Referenced Out

MONUMENT DETAIL

Previous Renewals 1900, 1955, 1987

Monument(s) Found: (Condition and Source)

N/A

FROM THE 1987 RENEWAL AN IRON BOLT WITH A 1 INCH SQUARE HEAD IS FIRMLY SET WITH TOP FLUSH WITH GROUND. NO EVIDENCE OF 1955 1/2 INCH IRON PIPE IS FOUND.

Accessories Found:

NO EVIDENCE OF D.B.T.S FOUND.

FROM 1955 RENEWAL POSSIBLE EVIDENCE OF ONE BEARING OBJECT FOUND: A LIGHT POLE NOW A 10 1/2 INCH D.B.H. POWER POLE TAGGED "5B-42" AND WITH THE EARLIEST FOUND DATE TAG OF 1996. BEARS S 30 1/2° E, 152 3/8 FEET DISTANT (BEARING AGREES WITH 1987 RENEWAL, 1955 AND 1987 RENEWALS DID NOT RECORD A DISTANCE).

A NEW POWER POLE APPEARS TO REPLACE NW LIGHT POLE FROM 1955 RENEWAL (SAWED OFF BASE IN 1987 RENEWAL) BUT NO EVIDENCE OF THE 1955 LIGHT POLE REMAINS.

RENEWAL

Monument Set (Procedure and Description)

Monument Detail

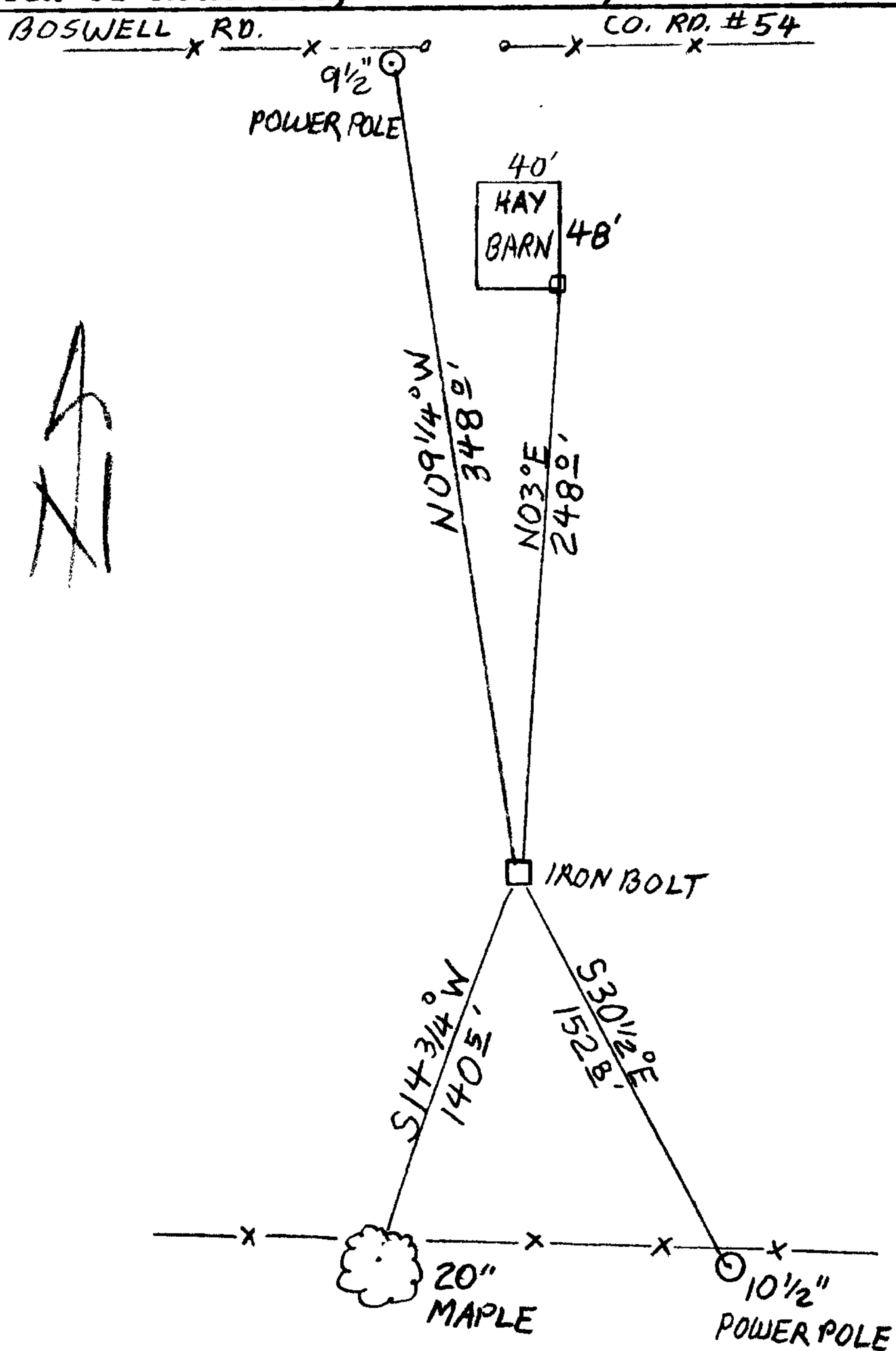
MONUMENT IS STABLE WE DO NOT DISTURB. MONUMENT IS IN MOWED FIELD WE DO NOT REESTABLISH WITNESS SIGN.

N/A

New Accessories

A 5 1/2 x 5 1/2 INCH SQUARE PRESSURE-TREATED WOOD SE CORNER POST OF A SMALL 40 x 48 FOOT HAY BARN; BEARS N 03° E, 248± FEET DISTANT. A 20 INCH D.B.H. MAPLE SCRIBED "1/4 S 1/4 CS" "BT" ON A DOUBLE BLAZE; BEARS S 14 3/4° W, 140± FEET DIST. "5B" A 9 1/2 INCH D.B.H. POWER POLE TAGGED 43 WITH THE EARLIEST DATE TAG OF 1996; BEARS N 09 1/4° W, 348± FEET DISTANT.

Sketch of Monument, Accessories, and General Area



Location & Comments

MONUMENT IS IN OPEN GENTLY UNDULATING HAY FIELD AND IS 200± FEET NORTH OF ELK CREEK AND 350 FEET SOUTH OF BOSWELL ROAD.

Comp. Declin. 15 3/4° E
Agency DCSD
Party Chief STEPHEN JOHN FLAISE
Notekeeper Stephen John Flaese
Witnesses MIKE S. KOCH
JASON E. MARTIN

Address

Surveyor's Seal

REGISTERED PROFESSIONAL LAND SURVEYOR

Handwritten signature of Randall W. Smith

OREGON JULY 25, 1990 RANDALL W. SMITH 2489

EXPIRES 6-30-2012