

GOVERNMENT CORNER RESTORATION FORM

Date: 10-17-2011 By: JC

This survey consists of:

Township 21S Range 05W Sec. 35 County DOUGLAS Map: \_\_\_\_\_

State OREGON Date APRIL 27, 2011 No. 600100 Narrative: \_\_\_\_\_  
Corner Rpt: CS 67/33-39

Corner Designation

S35 | S36  
S2 | S1

DOUGLAS COUNTY SURVEYOR

- \_\_\_\_ Condition Report Only
- \_\_\_\_ Not Found
- Renewed
- \_\_\_\_ Unrecorded
- \_\_\_\_ Surveyed In
- \_\_\_\_ Referenced Out

Previous Renewals 1953, 1982

MONUMENT DETAIL

Monument(s) Found: (Condition and Source)

CAPPED IRON PIPE NOTED AS FOUND IN 1953 AND DESCRIBED AS A 1 INCH DIAMETER IRON ROD IN 1982. IS NOT SEEN (POSSIBLY BURIED WHEN 1982 MONUMENT WAS SET).

FROM 1982 RENEWAL A 3 1/4 INCH DIAMETER ALUMINUM CAP (MARKED AS AT RIGHT) ON A 2 1/2 INCH I.D. ALUMINUM PIPE IS PLUMB AND FIRMLY SET PROTRUDING 3 INCHES ABOVE GROUND.

U.S. DEPARTMENT OF THE INTERIOR

T21S R5W

S35 | S36

S2 | S1

T22S R5W

1982

CADASTRAL SURVEY

BUR. OF LAND MANAGEMENT

Accessories Found:

EVIDENCE OF THREE ORIGINAL BEARING TREES.

A FIR 30" DIA. NOW A VERY ROTTEN 36 INCH DIAMETER 3 FOOT TALL FIR STUMP WITH NO REMAINING MARKS OR BLAZES; BEARS N58°W, 11 1/2 FEET DISTANT (RECORD N55°W, 10 1/2 FT (GOOD FACE DISTANCE)).

WE DO NOT LOOK FOR ORIGINAL N.E. BEARING TREE; NUMEROUS REPROD TREES BLOCK MEASUREMENT.

A FIR 50" DIA. NOW A POSSIBLE BUT INDISTINCT ROOT-HOLE; BEARS S70°E, 29 3/4 FEET DISTANT (AS PER RECORD).

A FIR 15" DIA. NOW A 20 INCH DIAMETER 3 1/2 FOOT TALL FIR STUMP (NOW GROWN INTO EDGE OF LARGER, YOUNGER, STUMP TO SOUTHEAST) WITH THE PARTIAL REMAINS OF A BLAZE SHOWING THE CLEAR SCRIBING "S2"; BEARS S28°W, 55 1/2 FEET DISTANT (AS PER RECORD).

TWO RENEWAL BEARING TREES FROM 1953.

A 14" FIR NOW A 28 INCH D.B.H. DOUGLAS FIR STUMP WITH A FULLY HEALED SINGLE BLAZE. BEARS N65°E, 32 3/4 FEET DISTANT (RECORD N65°E, 30 3/8 FT, MEAS DIST. AGREES WITH 1982 REC.)

AN 8" FIR NOW A 27 INCH D.B.H. DOUGLAS FIR WITH A FULLY HEALED SINGLE BLAZE; BEARS S58°E, 16 1/2 FEET DISTANT (RECORD S55°E, 16 1/2 FT).

EVIDENCE OF ONE RENEWAL BEARING TREE FROM 1982

A GRAND FIR 6" DIA. NOW A DOWN AND BARKLESS FIR 12 INCHES IN DIAMETER WITH AN UNHEALED SINGLE BLAZE WITH THE SCRIBING "T22S R5W S22" (LOWER BLAZE ROTTEN) TREE IS OUT OF POSITION BUT SHALLOW ROOT DEPRESSION BEARS S47°W, 29° FEET DISTANT (AS PER RECORD).

A FIR 16" DIA. IS NOT FOUND.

A GALVANIZED STEEL POST PROTRUDING 3 FEET ABOVE GROUND IS SET 1 FOOT S.W. FROM MONUMENT.

C.S. File No 67/3339

Monument Set (Procedure and Description)

Monument Detail

MONUMENT IS IN STABLE CONDITION.

N/A

New Accessories

" T225 "

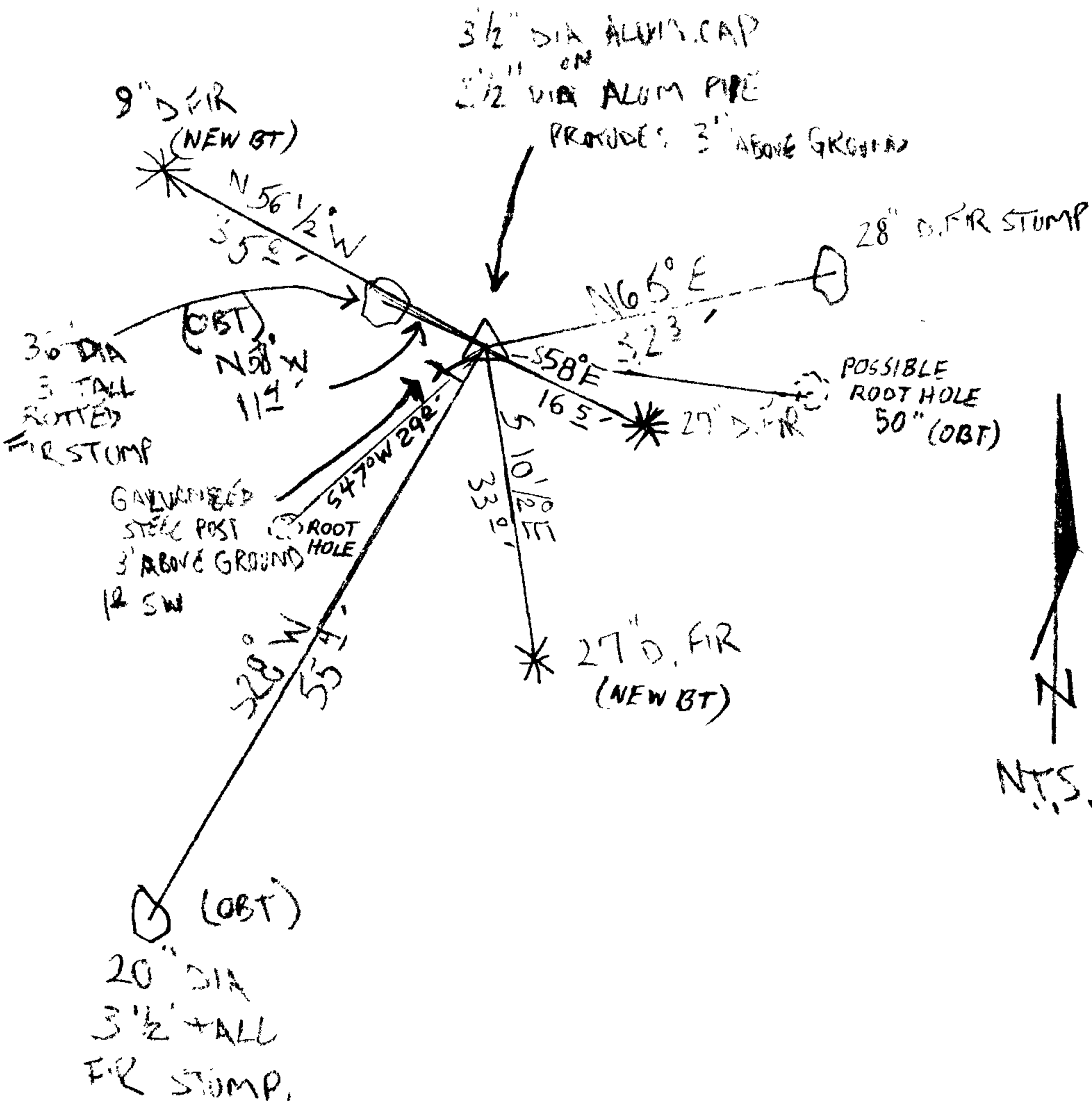
A 27 INCH D.B.H. DOUGLAS FIR SCRIBED R5WS1CS "BT" ON A DOUBLE BLAZE; BEARS S10 1/2° E, 33° FEET DISTANT.

A 9 INCH D.B.H. DOUGLAS FIR SCRIBED "T21SR5WS35CS" "BT" ON A DOUBLE BLAZE; BEARS N56 1/2° W, 35 1/2 FEET DISTANT.

Sketch of Monument, Accessories, and General Area

Location & Comments

MONUMENT IS IN NEWER REPRUD. FOREST ON MODERATE NORTHEASTERLY SLOPE WITH AN OLD-GROWTH FOREST IN THE SOUTHEAST QUADRANT



Comp. Declin. 15 3/4° E  
Agency D.C.S.O.  
Party Chief STEPHEN JOHN FLAUSE  
Notekeeper Stephen John Flause  
Witnesses MIKE S. KOCH  
GARRETT A. MCGRAW

Address

REGISTERED Surveyor's Seal  
PROFESSIONAL  
LAND SURVEYOR

OREGON  
JULY 25, 1990  
RANDALL W. SMITH  
2409

RENEWAL 6-30-2012