

GOVERNMENT CORNER RESTORATION FORM

Date: 10-17-2011 By: JC

Township 225 Range 5W Sec. 3

County DOUGLAS

This survey consists of:

State OREGON

Date APRIL 15, 2011

No. 400640

Narrative: Corner Rpt: CS 67|33-38

Corner Designation

1/4
S4 | S3

- DOUGLAS COUNTY SURVEYOR
- Condition Report Only
- Not Found
- Renewed
- Unrecorded
- Surveyed In
- Referenced Out

Previous Renewals 1924, 1959, 1976

Monument(s) Found: (Condition and Source)

FROM 1976 RENEWAL A 2 1/2 INCH DIAMETER BRASS CAP (MARKED AS AT RIGHT) ON A 1 INCH I.D. IRON PIPE IS FIRMLY SET AND PROTRUDES 6 INCHES ABOVE GROUND. A 1 INCH X 1 INCH HAINES "T" IRON WITH BRASS I.D. WASHER AT TOP (FROM 1959 RENEWAL) IS SET ON NORTH EDGE OF AND SLIGHTLY LOWER THAN B.C. MONUMENT.

MONUMENT DETAIL

DOUGLAS CO. SURVEYOR
T225
1/4
S4 | S3
R5W
1976

Accessories Found:

ONE ORIGINAL BEARING TREE A FIR 24" DIA. NOW 38 INCH DIAMETER 3 FOOT TALL FIR STUMP WITH THE SCRIBING "1/4 S3 BT" VISIBLE ON A PREVIOUSLY OPENED SINGLE BLAZE; BEARS N43°E, 91² FEET DISTANT (ORIGINAL RECORD N45°E, 93² FT.)

1924 RENEWAL TREE GONE.

TWO 1959 RENEWAL TREES. A 12" B. OAK NOW A 29 INCH D.B.H. BLACK OAK (TOP BROKEN OUT BUT NOW HEALED AND GROWING WELL) WITH A FULLY HEALED SINGLE BLAZE; BEARS S50 1/2°E, 8² FEET DISTANT (RECORD S57°E, 8² FEET, THIS BEARING IS POSSIBLY A FACE MEAS.)

A 16" FIR NOW A 32 INCH D.B.H. 7 FOOT TALL DOUGLAS FIR STUMP WITH A FULLY HEALED SINGLE BLAZE; BEARS N30 1/2°W, 40⁴ FEET DISTANT (THIS AGREES WITH 1976 RECORD, 1959 RECORD IS N34 1/4°W, 40⁴ FT.)

THE ONE 1976 RENEWAL BEARING TREE. A 16" R. CEDAR NOW 29 INCH D.B.H. RED CEDAR WITH A FULLY HEALED SINGLE BLAZE; BEARS N3°E, 27⁵ FEET DISTANT (AS PER RECORD).

RENEWAL

Monument Set (Procedure and Description)

Monument Detail

MONUMENT GOOD AS FOUND.

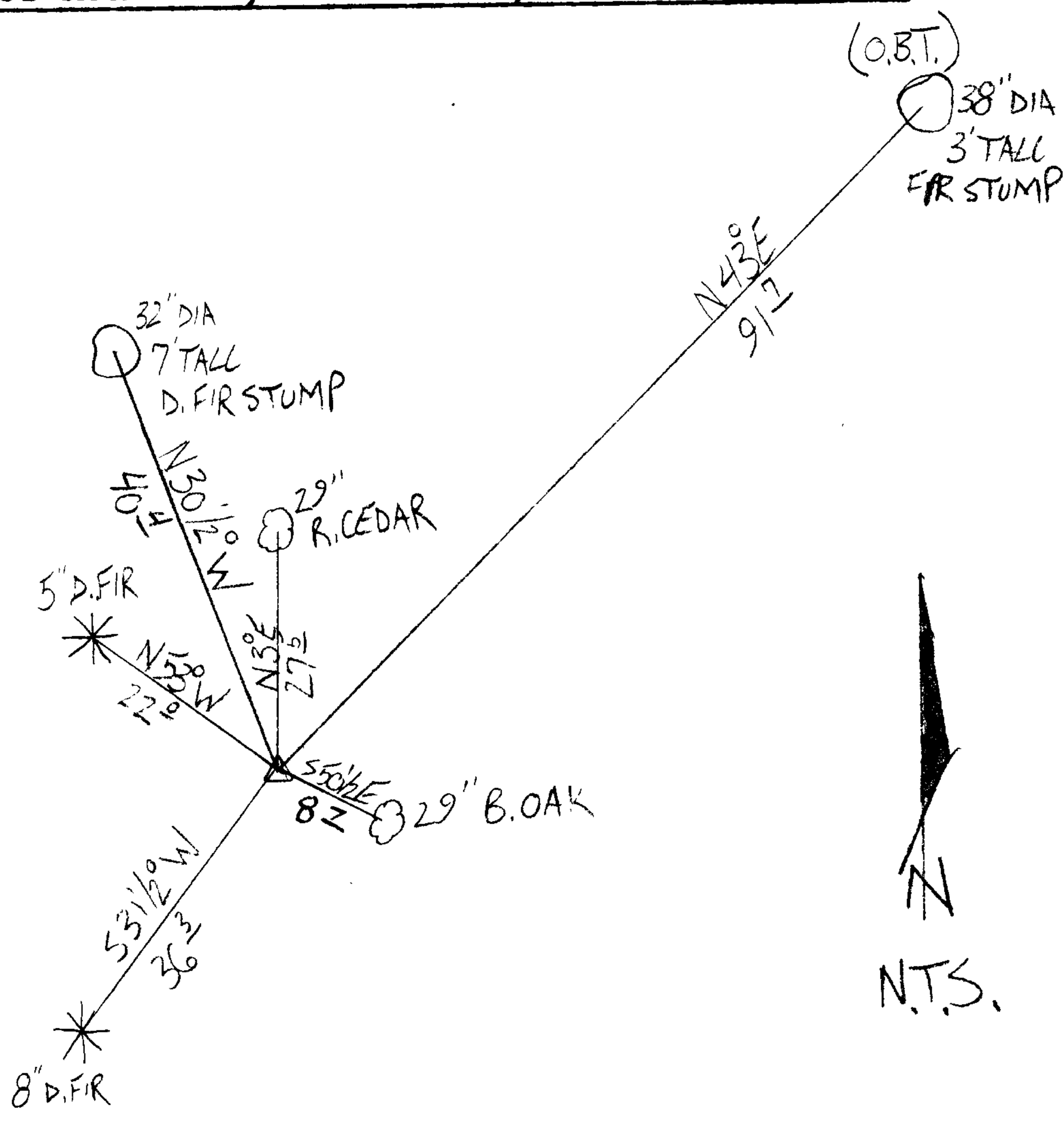
NA

New Accessories

AN 8 INCH D.B.H. DOUGLAS FIR SCRIBED "1454CS" "13T" ON A DOUBLE BLAZE; BEARS S 31 1/2° W, 36 2 FEET DISTANT.

A 5 INCH D.B.H. DOUGLAS FIR SCRIBED "X" "CS BT" ON A HIGH-LOW BLAZE; BEARS N 53° W, 22 0 FEET DISTANT.

Sketch of Monument, Accessories, and General Area



Location & Comments

CORNER IS ON MODERATE, ROLLING, NORTHWEST SLOPE ON OLD SECOND GROWTH FOREST. SOUTH TIMBERLINE 200 FT WEST FROM FOREST ACCESS RD. INTERSECTION.

Comp. Declin. 15 3/4 ° E
Agency D. C. S. O.
Party Chief STEPHEN JOHN FLAUSE
Notekeeper Stephen John Flause
Witnesses MIKE S. KOCH
GARRETT A. MCGRAW
JASON MARTIN

Address

REGISTERED'S Seal
PROFESSIONAL
LAND SURVEYOR

OREGON
JULY 25, 1999
RANDALL W. SMITH
2488

Renewal 6-30-2012