

GOVERNMENT CORNER RESTORATION FORM

Date: 5/16/2011 By: JC

This survey consists of:

Township 26S Range 04W Sec. 23 County DOUGLAS
State OREGON Date APRIL 29, 2011 No. 600300 Narrative: _____
Corner Rpt: CS67/33-33

Corner Designation

S23 | S24
---+---
S26 | S25

DOUGLAS COUNTY SURVEYOR

Condition Report Only

Not Found

Renewed

Unrecorded

Surveyed In

Referenced Out

MONUMENT DETAIL

Previous Renewals 1912, 1925, 1926, 1971

Monument(s) Found: (Condition and Source)

A 5/8 INCH DIA 1 METER SMOOTH IRON ROD 24 INCHES LONG OVERALL, UPPERMOST 1 1/2 INCHES IS BENT 90° TO LONG SEGMENT; PROTRUDES APPROXIMATELY 10 INCHES ABOVE GROUND AND IS PLUMB AND FIRMLY SET. MONUMENT WAS REFERENCED OUT AND REMOVED FROM GROUND TO MEASURE; NO STONES OR OTHER MONUMENTS WERE FOUND IN AREA. THE 1925 RECORD DESCRIBES A 5/8" x 2" I. P. SET AS THE CORNER MONUMENT. THE 1926 IRVING RENEWAL DESCRIBES THE CORNER MONUMENT AS AN IRON PIN.

N/A

Accessories Found:

NO ORIGINAL REFERENCES FOUND
NO EVIDENCE OF RENEWAL REFERENCES FROM 1912, 1925, 1926 OR STUMPS AND FENCES NOTED IN 1971 CORNER SEARCH ARE FOUND. MUCH OF AREA HAS BEEN BURNED AND CLEARED MANY TIMES IN PAST.

RENEWAL

Monument Set (Procedure and Description)

Monument Detail

AT ABOVE NOTED REFERENCED POSITION OF FOUND IRON ROD MONUMENT IS SET A 2 7/16 INCH DIAMETER BRASS CAP (MARKED AS AT RIGHT) ON AN 1 INCH I. D. X 30 INCH LONG IRON PIPE PROTRUDING 3 INCHES ABOVE GROUND.

FOUND IRON ROD MONUMENT IS SET ON SOUTH EDGE OF B.C. MONUMENT PROTRUDING 2 INCHES ABOVE GROUND.

DOUGLAS COUNTY SURVEYORS
T26S R4W

523 | 524

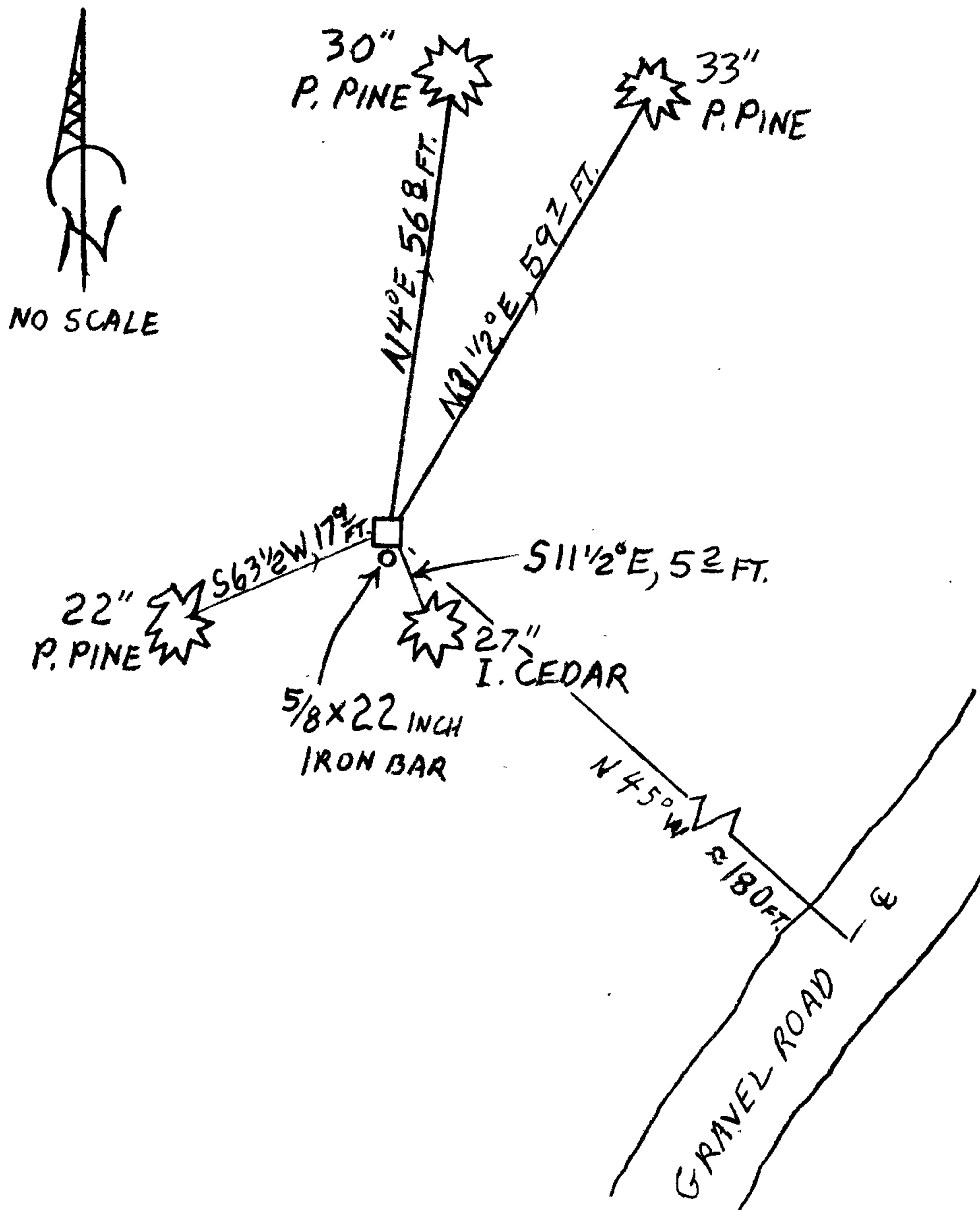
526 | 525

2011

New Accessories

- A 33 INCH D.B.H. PONDEROSA PINE SCRIBED "T26SR4WS24CS" "BT" ON A DOUBLE BLAZE; BEARS N 31 1/2° E, 59 2 FEET DISTANT.
- A 27 INCH D.B.H. INCENSE CEDAR SCRIBED "T26SR4WS25CS" "BT" ON A DOUBLE BLAZE; BEARS S 11 1/2° E, 52 FEET DISTANT.
- A 22 INCH D.B.H. PONDEROSA PINE SCRIBED "T26SR4WS26CS" "BT" ON A DOUBLE BLAZE; BEARS S 63 1/2° W, 17 2 FEET DISTANT.
- A 30 INCH D.B.H. PONDEROSA PINE SCRIBED "T26SR4WS24CS" "BT" ON A DOUBLE BLAZE; BEARS N 04° E, 56 2 FEET DISTANT.

Sketch of Monument, Accessories, and General Area



Location & Comments

MONUMENT IS ON EASTERLY EDGE OF SLIGHT BENCH ON A GENTLE SOUTHEAST SLOPE. SURROUNDING LAND IS A GENERALLY OPEN PASTURE WITH SPARSE PINES AND HARDWOODS.

Comp. Declin. 15 3/4° E

Agency DCSD

Party Chief STEPHEN JOHN FLAUSE

Notekeeper Stephen John Flause

Witnesses MIKE S. KOCH,

GARRETT A MCGRAW, BILL BOHME

Address

Surveyor's Seal

