

GOVERNMENT CORNER RESTORATION FORM

Date: 5/9/2011 By: JC
This survey consists of:

Township 22.5 Range 05W Sec. 3 County DOUGLAS Map: _____
State OREGON Date APRIL 14, 2011 No. 400600 Narrative: _____
Corner Rpt: CS 67/33-32

Corner Designation

54 | 53
59 | 510

DOUGLAS COUNTY SURVEYOR

- Condition Report Only
- Not Found
- Renewed
- Unrecorded
- Surveyed In
- Referenced Out

Previous Renewals 1912, 1960, 1965

MONUMENT DETAIL

Monument(s) Found: (Condition and Source)

FROM 1960 RENEWAL A 1 INCH X 1 INCH HAINES "T" IRON (MISSING BRASS I.D. WAGNER) IS FIRMLY SET AND PLUMB. MONUMENT PROTRUDES 12 INCHES ABOVE GROUND.

N/A

Accessories Found:

REMNANTS OF TWO D.B.T.s. A 60" DIA. FIR NOW A VERY ROTTEN APPROX. 48 INCH DIAMETER 2 FOOT TALL FIR STUMP WITH NO REMAINING MARKS; BEARS N32°E, 14⁰ FEET DISTANT (RECORD N25°E, 11⁹ FEET; THIS DISTANCE IS GOOD TO ORIGINAL FACE)

A 36" DIA. FIR NOW A VERY ROTTEN APPROX. 30 INCH DIAMETER 3 FOOT TALL FIR STUMP WITH NO REMAINING MARKS; BEARS N38°W, 33² FEET DISTANT (RECORD N38°W, 30⁴ FEET; THIS DISTANCE IS GOOD TO ORIGINAL FACE).

FOUR RENEWAL B.T.S FROM 1965. A 11" FIR NOW A 20 INCH DIAMETER 1 FOOT TALL FIR STUMP WITH A LARGE SPIKE NAIL SET IN TOP ABOVE CENTER OF THE ROOT CROWN; THIS TREE SHOWS NO BLAZE OR MARKS AND BEARS N22°W, 23⁸ FEET DISTANT (AS PER RECORD).

A 13" FIR NOW A 28 INCH DIAMETER 1 FOOT TALL FIR STUMP WITH A LARGE SPIKE NAIL SET IN TOP ABOVE C.R.C.; THIS TREE SHOWS NO BLAZES OR MARKS AND BEARS N66°E, 4⁵ FEET DISTANT (AS PER RECORD).

AN 11" MADRONE NOW A 12 INCH D.B.H. MADRONE WITH A PARTIALLY HEALED DOUBLE BLAZE SHOWING VISIBLE BUT ILLEGIBLE SCRIBING; BEARS S22°W, 25⁵ FEET DISTANT (AS PER RECORD).

A 13" D. FIR NOW A 28 INCH D.B.H. DOUGLAS FIR WITH A FULLY HEALED SINGLE BLAZE; BEARS S53°E, 42⁵ FEET DISTANT (AS PER RECORD).

RENEWAL

Monument Set (Procedure and Description)

Monument Detail

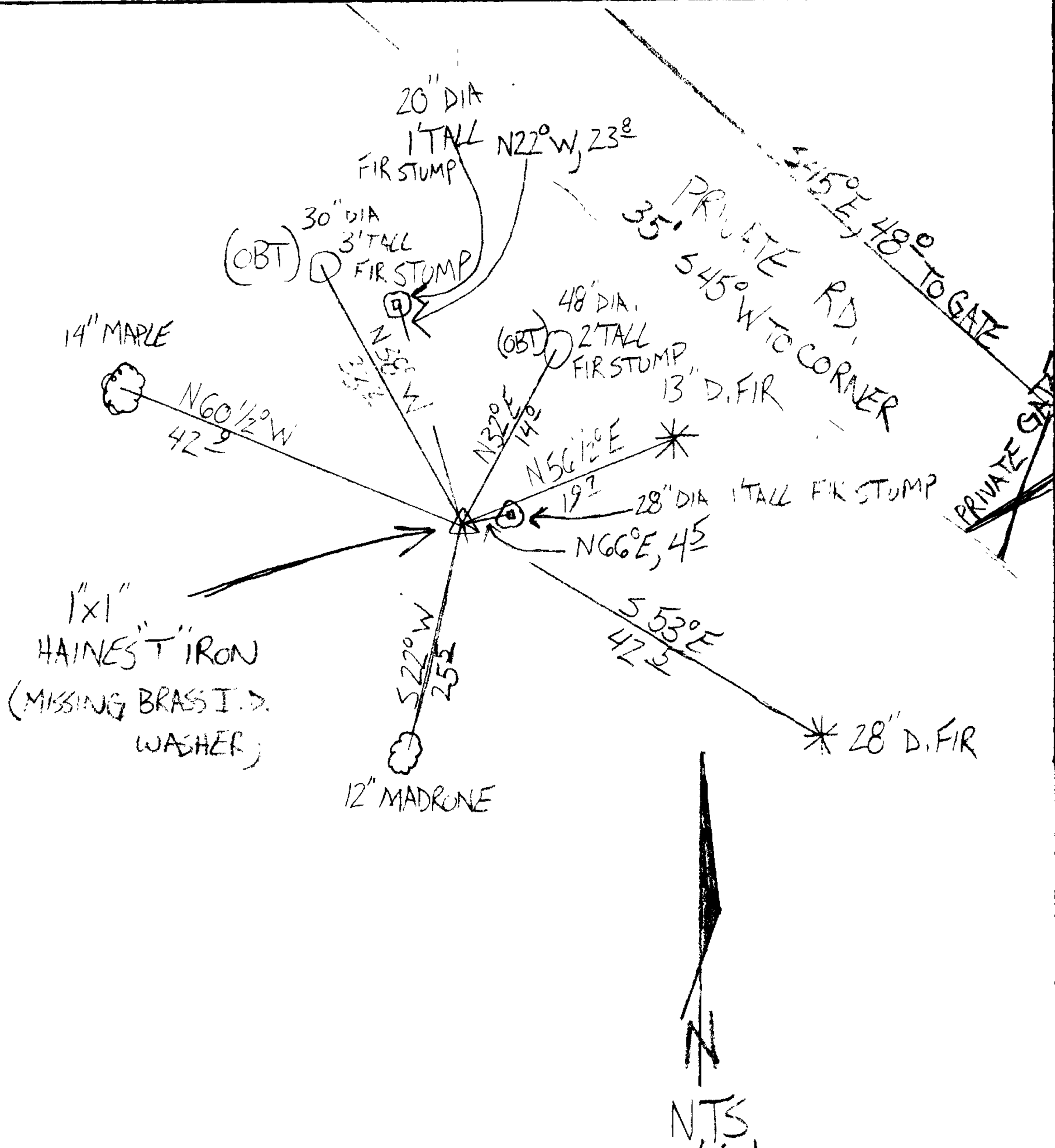
MONUMENT IS SOLID WE DO NOT ALTER.

N/A

New Accessories

A 1 1/4 INCH D.B.H. MAPLE SCRIBED "T22SR5W54CS" "BT" ON A DOUBLE BLAZE; BEARS N60°12'W, 42.9 FEET DISTANT.
A 1 3/8 INCH D.B.H. DOUGLAS FIR SCRIBED "T22SR5W53CS" "BT" ON A DOUBLE BLAZE; BEARS N56°12'E, 19.7 FEET DISTANT.

Sketch of Monument, Accessories, and General Area



Location & Comments

MONUMENT IS ON NORTHERLY EDGE BENCH-LAND AT TOP OF GENTLE NORTHEAST SLOPE IN A VERY OLD REPROD. FIR FOREST. MONUMENT IS JUST SOUTHWEST OF FOREST ACCESS ROAD AND NEAR A PROPERTY LINE GATE.

Comp. Declin. 15 3/4° E
Agency DCSO
Party Chief STEPHEN JOHN FLAUSE
Notekeeper Stephen John Flause
Witnesses MIKE S. KOCH
GARRET A. MCGRAW

Address

Surveyor's Seal

REGISTERED PROFESSIONAL LAND SURVEYOR

Renewal 6-30-2012

OREGON
JULY 25, 1999
RANDALL W. SMITH
2400