

GOVERNMENT CORNER RESTORATION FORM

Date: 4-6-2011 By: JC

Township 30S Range 06W Sec. 5

County DOUGLAS

This survey consists of:

State OREGON

Date MARCH 8, 2011

No. 240700

Narrative: Corner Rpt: CS 67/33-22

Corner Designation

N 1/4 55

DOUGLAS COUNTY SURVEYOR

- Condition Report Only
- Not Found
- Renewed
- Unrecorded
- Surveyed In
- Referenced Out

MONUMENT DETAIL

Previous Renewals 1904 (ORIG AS N 1/4 55 ONLY), 1916, 1956, 1958, 1980

Monument(s) Found: (Condition and Source)

FROM THE 1958 B.L.M. RESURVEY A MONUMENT  
 A 3 1/4 INCH DIAMETER BRASS CAP (MARKED AS  
 AT RIGHT) ON A 2 1/2 INCH D.I. IRON PIPE FIRMLY  
 SET AND PROTRUDING 8 INCHES ABOVE GROUND  
 BUT NOT SHOWING ANY EVIDENCE OF 5 FOOT  
 MOUND OF STONE. ALSO NO EVIDENCE OF 1956  
 3/4 INCH IRON PIPE IS FOUND

A LOOSE STONE MEASURING 5 x 8 x 12 INCHES  
 WITH NO MARKS BEARS S 10° W, 1° FEET DISTANT FROM  
 FOUND B.C.

U.S. CADASTRAL SURVEY

1/4 55

T30S R6W

1958

BUREAU OF LAND MANAGEMENT

Accessories Found:

NO ORIGINAL 1854 BEARING TREES ARE FOUND.

EVIDENCE OF ONE 1904 BEARING TREE IS FOUND.

A W. OAK 9" DIA. NOW A FALLEN AND VERY ROTTED 6 INCH DIAMETER 6 FOOT LONG  
 WHITE OAK WITH NO MARKS OR SCRIBING THE CENTER OF ROOT CROWN OF WHICH BEARS  
 S 40° W, 27 1/2 FEET DISTANT (AS PER RECORD).

EVIDENCE FROM TWO 1956 RENEWAL BEARING TREES IS FOUND.

A 12" FIR NOW A 26 D.B.H. DOUGLAS FIR WITH A HIGH FULLY HEALED DOUBLE BLAZE; BEARS  
 S 31° W, 24 1/2 FEET DISTANT (AGREES WITH 1958 AND 1980 RECORD).

AN 18" CEDAR NOW A FALLEN 19 INCH DIAMETER 35 FOOT INCENSE CEDAR SNAG  
 WITH A PARTIALLY HEALED DOUBLE BLAZE SHOWING THE SCRIBING "1/4 55" "BT" THE C.R.C.  
 OF WHICH BEARS S 31 1/2° E, 33 1/2 FEET DISTANT (AGREES WITH 1958 AND 1980 RECORD).  
 S 31° W

A FALLEN OLD E-W FENCELINE IS APPROX 5 FEET SOUTH FROM BC MON.

(1980 RENEWAL BT NOT FOUND, FALLS IN CREEK)

RENEWAL

Monument Set (Procedure and Description)

Monument Detail

N/A

N/A

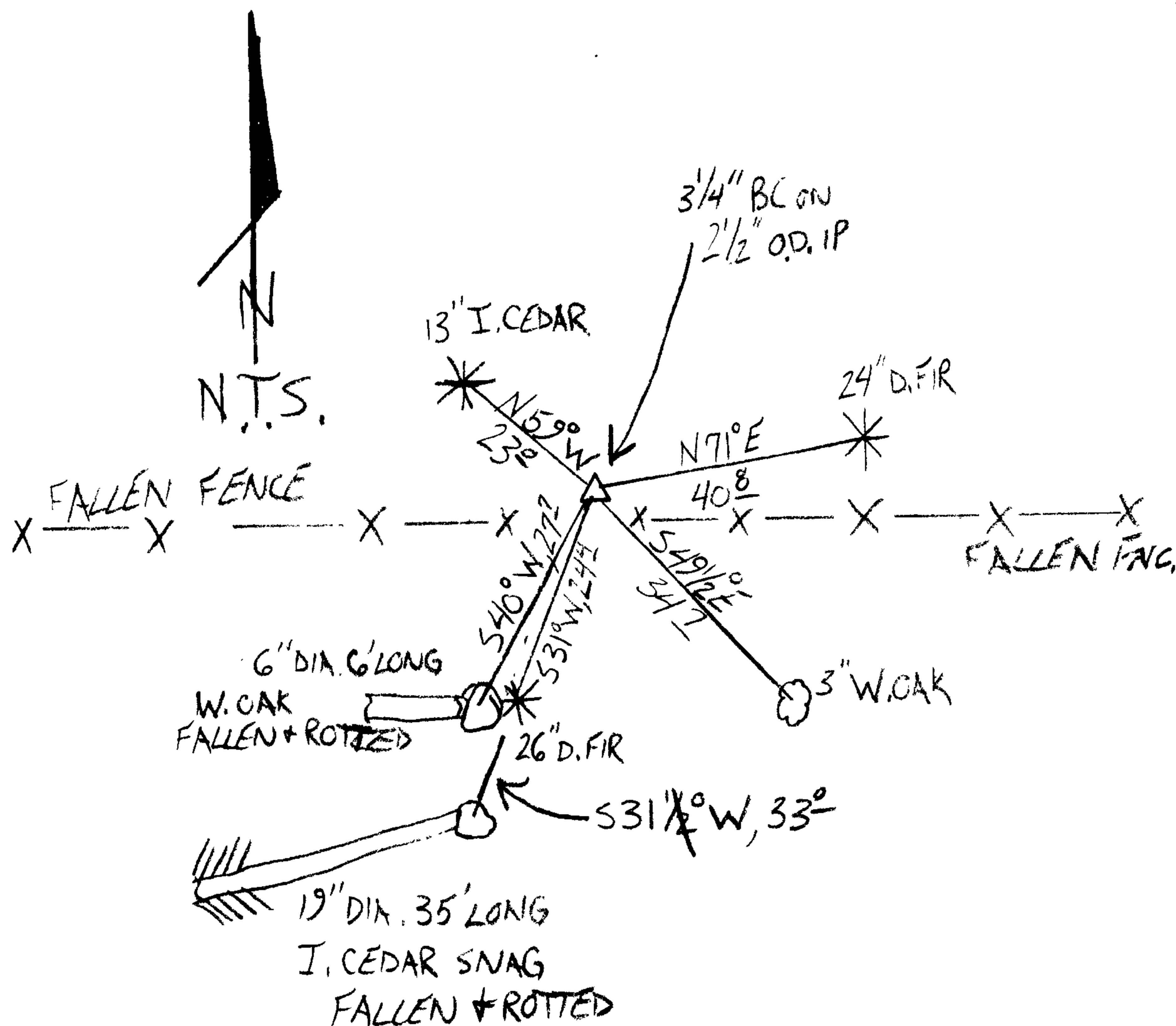
New Accessories

A 2 1/4 INCH D.B.H. DOUGLAS FIR SCRIBED "N 1/4 S 5 CS" "BT" ON A DOUBLE BLAZE; BEARS N 71° E, 40 8 FEET DISTANT.

A 3 INCH D.B.H. WHITE OAK SCRIBED "X" "CS BT" ON A HIGH LOW BLAZE (THE LOWER BLAZE FACES SOMEWHAT ESTLY OF BEARING TO BC); BEARS S 49° 2' E, 34 1/2 FEET DISTANT.

A 1 1/2 INCH D.B.H. INCENSE CEDAR SCRIBED "N 1/4 S 5 CS" "BT" ON A DOUBLE BLAZE; BEARS N 59° W, 23 0 FEET DISTANT

Sketch of Monument, Accessories, and General Area



Location & Comments

MONUMENT IS ON MODERATE FORESTED NE SLOPE ON WESTLY SIDE OF DRAW OF SEASONAL CREEK AND APPROX 150 FEET NTHLY FROM A MAIN BLM ROAD.

Comp. Declin. 15 3/4° E  
 Agency DCSO  
 Party Chief STEPHEN JOHN FLAUSE  
 Notekeeper Stephen John Flause  
 Witnesses MIKE S. KOCH  
 GARRETT A. Mc GRAW

Address

Surveyor's Seal

REGISTERED PROFESSIONAL LAND SURVEYOR

*Handwritten signature and date:*  
 Renewal 6-30-2012

OREGON  
 JULY 25, 1990  
 RANDALL W. SMITH  
 2489