

GOVERNMENT CORNER RESTORATION FORM

Date: 4-6-2011 By: JC

This survey consists of:

Township 29S Range 06W Sec. 13 County DOUGLAS

State OREGON Date MARCH 3, 2011 No. 700400 Narrative: Corner Rpt: CS 67/33-21

Corner Designation

S13 | S18
S24 | S19

DOUGLAS COUNTY SURVEYOR

- Condition Report Only
- Not Found
- Renewed
- Unrecorded
- Surveyed In
- Referenced Out

Previous Renewals 1951, 1962, 1977

Monument(s) Found: (Condition and Source)

FROM 1977 RENEWAL
 A 2 5/8 INCH DIAMETER BRASS CAP (MARKED AS AT RIGHT) ON A 1 1/2 INCH I.D. IRON PIPE, FIRMLY SET AND PROTRUDING 3 INCHES ABOVE GROUND. IRON PIPE FROM 1951 RENEWAL SAID TO BE ON NORTH EDGE OF P.C. MONUMENT IS NOT FOUND. B.C. MONUMENT IS ON SOUTH EDGE OF 5 1/2 FOOT TALL FENCE CORNER POST WITH FEAKES NOW RUNNING NORTH-SOUTH AND WEST.

DOUGLAS COUNTY SURVEYOR T 29S

R6 S13 | S18 R5
 S24 | S19
 1977

MONUMENT DETAIL

Accessories Found:

POSSIBLE EVIDENCE OF TWO ORIGINAL 1854 BEARING TREES IS FOUND
 A B. OAK 12" DIA. NOW AN APPROX. 10 FOOT TALL ROTTED BARKLESS 38 INCH D.B.H. OAK STUMP WITH A ROTTED AND BURNED CENTER BUT SHOWING A PREVIOUS BLAZE SEARCH OPENING; BEARS S 85° W, 46° FEET DISTANT (AGREES WITH 1951, 1962 AND 1977 RECORDS REASONABLY WELL).
 A B. OAK 12" DIA. NOW A ROOT DEPRESSION WITH ROTTED OAK REMNANTS BEARS N 10° E 128° FEET DISTANT (AS PER ORIG. RECORD).

EVIDENCE OF THREE 1951 RENEWAL BEARING TREES IS FOUND.
 A 36" W. OAK NOW A 9 FOOT LONG, 40 INCH DIAMETER FALLEN AND CUT BLACK OAK STUMP (FACE SIDE DOWN) THE CENTER OF ROOT CROWN OF WHICH BEARS N 78° W, 76° FEET DISTANT (RECORD N 83° W, 76.0')
 A 36" B. OAK NOW A 46 INCH D.B.H. BLACK OAK WITH A NEARLY FULLY HEALED SINGLE BLAZE; BEARS NORTH, 73° FEET DISTANT (RECORD NORTH, 71.5' IS A GOOD FACE MEASUREMENT)
 AN 18" B. OAK NOW A 33 INCH D.B.H. WHITE OAK WITH A FULLY HEALED SINGLE BLAZE BEARS S 15° E, 133° FEET DISTANT (1951 RECORD S 16° E, 133')

RENEWAL

Monument Set (Procedure and Description)

Monument Detail

N/A

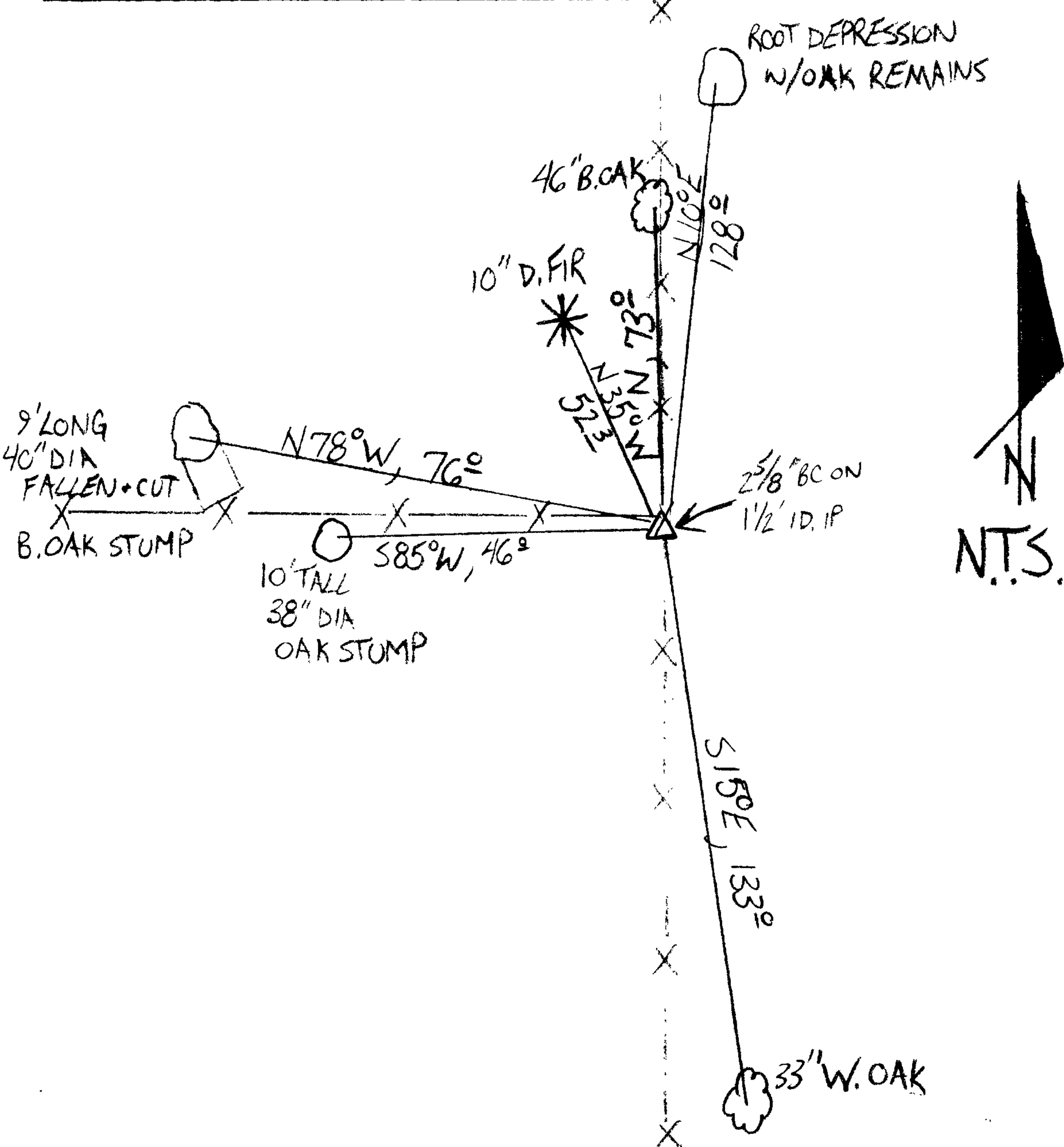
N/A

New Accessories

A 10 INCH D.B.H. DOUGLAS FIR SCRIBED "T29SR6WS13CS" "BT" ON A DOUBLE BLAZE
; BEARS N35°W, 52 3/4 FEET DISTANT

Sketch of Monument, Accessories, and General Area

Location & Comments



MONUMENT IS ON WEST EDGE OF LARGE OPEN PASTURE NEAR FOOT OF GENTLE WOODED EASTERLY SLOPE AND NORTH FROM AN EAST WEST RUNNING SWALE

Comp. Declin. 15 3/4° E
Agency DCSO
Party Chief STEPHEN JOHN FLAUSE
Notekeeper Stephen John Flause
Witnesses MIKE S. KOCH
GARRETT A. MCGRAW

Address

Surveyor's Seal

REGISTERED
PROFESSIONAL
LAND SURVEYOR

Renewal 6-30-2012

OREGON
JULY 25, 1990
RANDALL W. SMITH
2466