

GOVERNMENT CORNER RESTORATION FORM

Date: 4-6-2011 By: JC

Township 29S Range 06W Sec. 25

County DOUGLAS This survey consists of: Map: _____

State OREGON Date MARCH 2, 2011

No. 600240 Narrative: _____
Corner Rpt: CS 67/33-20

Corner Designation

1/4
526 | 525

DOUGLAS COUNTY SURVEYOR

- Condition Report Only
- Not Found
- Renewed
- Unrecorded
- Surveyed In
- Referenced Out

MONUMENT DETAIL

Previous Renewals 1913, 1958, 1977

Monument(s) Found: (Condition and Source)

FROM 1913 RENEWAL A CORNER TREE
A MAPLE 8" DIA. NOW A 16 INCH D.B.H MAPLE
WITH NO BLAZES OR MARKS EVIDENT AND PAR-
TIALLY GROWN TOGETHER WITH TWO SMALLER
MAPLE TRUNKS.

FROM 1977 RENEWAL AT A POINT S 45° W 0⁸ FEET
DISTANT FROM THE C.R.C. OF THE ABOVE FOUND
16 INCH DIAMETER MAPLE IS A 2 1/2 DIAMETER BRASS
CAP (MARKED AS AT RIGHT) ON 1 1/2 INCH I.D. IRON PIPE
FIRMLY SET, PROTRUDING APPROX. 16 INCHES ABOVE
A LOOSE MOUND OF A FEW STONES.

1" IRON PIPE "SET BY BLM" MENTIONED IN 1977
RENEWAL IS NOT FOUND.

Accessories Found:

NO O.B.T.S FOUND.

EVIDENCE OF TWO 1913 RENEWAL BEARING TREES FOUND. THESE ARE REFERENCED
TO THE C.R.C. OF THE ABOVE MAPLE CORNER TREE.

A FIR 30" DI. NOW A 6 FOOT TALL METAL CAPPED 44 INCH D.B.H. FIR STUMP WITH A
FULLY HEALED SINGLE BLAZE; BEARS N 55° E 10 1/2 FEET DISTANT (RECORD N 55° E, 8° FEET
IS A GOOD FACE MEASUREMENT).

A FIR 16" DIA. NOW A DOWN, OUT, AND ROTTED FIR LOG (WE DO NOT LOOK FOR MARKS)
THE ROOT-HOLE OF WHICH IS REASONABLE FOR THE N 89° W BEARING TREE.

EVIDENCE OF TWO 1958 RENEWAL TREES FOUND. THESE ARE MEASURED FROM BC MON.
A 14" W. FIR NOW A 1 1/2 FOOT TALL ROTTED 14 INCH DIAMETER FIR STUMP
WITH NO REMAINING BLAZE EVIDENCE; BEARS N 68° E, 75° FEET DISTANT (AS PER RECORD).

A 14" MAPLE NOW A 19 INCH D.B.H. BIG LEAF MAPLE WITH A FULLY HEALED DOUBLE BLAZE;
BEARS N 70° E, 108° FEET DISTANT (AS PER RECORD). TREE HAS ADDITIONAL LIMB LIKE TRUNK, D.B.H. IS FROM
TIES TO CREEK APPEAR REASONABLE BUT THE 60 FT. STONE (ROCK OUT-CROP)
IS NO LONGER OBSERVABLE DUE TO FOREST GROWTH.

A BEARING TREE NOT OF RECORD WITH A BLM BEARING TREE TAG IS FOUND.
THIS IS A 23 INCH D.B.H. DOUGLAS FIR WITH A HEALED LOW BLAZE.

COUNTY SURVEYORS OFFICE

T29 S R 6 W

526 | 525

1/4 COR.

1977

SUBJECT TRUNK

RENEWAL

Monument Detail

Monument Set (Procedure and Description)

N/A

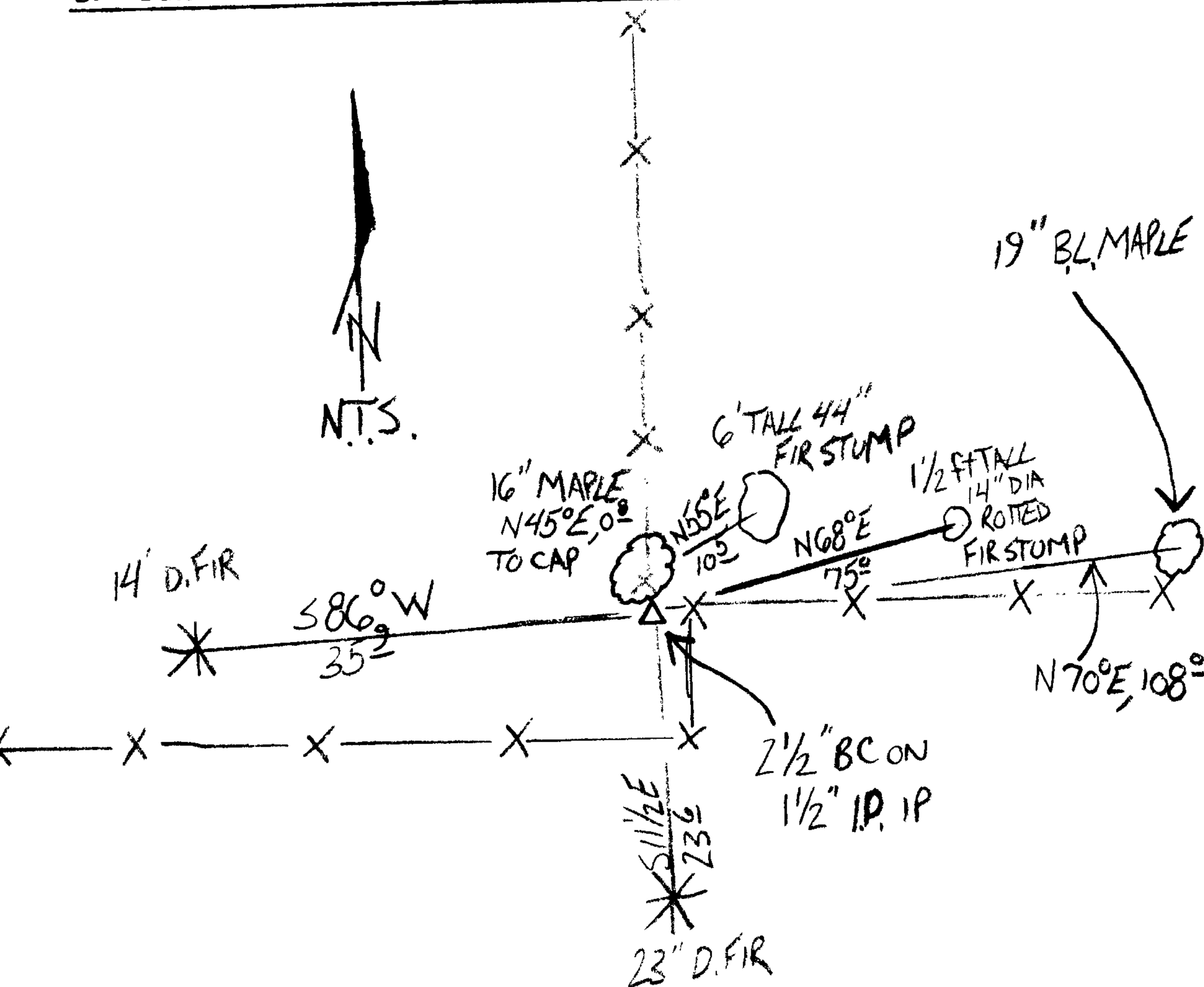
N/A

New Accessories

PREVIOUSLY NOTED UNRECORDED B.T. A 23 INCH D.B.H. DOUGLAS FIR TO WHICH WE ADD AN UPPER BLAZE SCRIBED "1/4 S 25 CS" BEARS S 11 1/2° E, 23 1/2 FEET DISTANT.

A 14 INCH D.B.H. DOUGLAS FIR SCRIBED "1/4 S 26 CS" "BT" ON A DOUBLE BLAZE; BEARS S 86° W, 35 1/2 FEET DISTANT.

Sketch of Monument, Accessories, and General Area



Location & Comments

MONUMENT IS ON STEEP N.W. SLOPE. TERRAIN IS MOSTLY FORESTED SOUTH AND EAST FROM CORNER AND IS OPEN AND ROCKY NORTH AND WEST FROM CORNER.

Comp. Declin. 15 3/4° E
 Agency D.C.S.O.
 Party Chief STEPHEN JOHN FLAUSE
 Notekeeper Stephen John Flause
 Witnesses MIKE S. KOCH, GARRETT A. MCGRAW

Address

Surveyor's Seal
 REGISTERED
 PROFESSIONAL
 LAND SURVEYOR

Handwritten signature
 6-30-2012

OREGON
 JULY 25, 1990
RANDALL W. SMITH
 2489