

GOVERNMENT CORNER RESTORATION FORM

Date: 3/28/2011 By: JC  
This survey consists of:

Township 29S Range 06W Sec. 26 County DOUGLAS Map: \_\_\_\_\_  
State OREGON Date FEB 16, 2011 No. 540200 Narrative: \_\_\_\_\_  
Corner Rpt: CS 67/33-16

Corner Designation

$\frac{1}{4}$   $\frac{526}{535}$

DOUGLAS COUNTY SURVEYOR

- Condition Report Only
- Not Found
- Renewed
- Unrecorded
- Surveyed In
- Referenced Out

MONUMENT DETAIL

Previous Renewals 1871 RESURVEY, 1913, 1943, 1961

Monument(s) Found: (Condition and Source)

FROM 1961 RENEWAL A 2 1/2 INCH DIAMETER BRASS CAP (MARKED AS AT RIGHT) ON A 1 1/2 INCH O.D. GALVANIZED IRON PIPE PROTRUDING APPROX. 14 INCHES ABOVE GROUND.

COUNTY SURVEYORS OFFICE

T29S R6W

$\frac{1}{4}$   $\frac{526}{535}$

1961

Accessories Found:

NO B.T.S. FOUND FROM 1854 OR 1871 SURVEYS.

NO 1913 CAIN B.T.S. FOUND (SE BEARING TREE FOUND BY BOYER FALLS IN SKYLINE DRV.)

FROM 1943 NEW B.T. MARKED BY BOYER FOUND.

AN 18" W. OAK NOW A 24 INCH D.B.H. WHITE OAK WITH A FULLY HEALED SINGLE BLAZE, BEARS N 28° E 673 FEET DISTANT (RECORD N 28° E, 660 FT) RECORD DISTANCE AGREES TO CENTER OF LEANING TRUNK.

RENEWAL

Monument Detail

Monument Set (Procedure and Description)

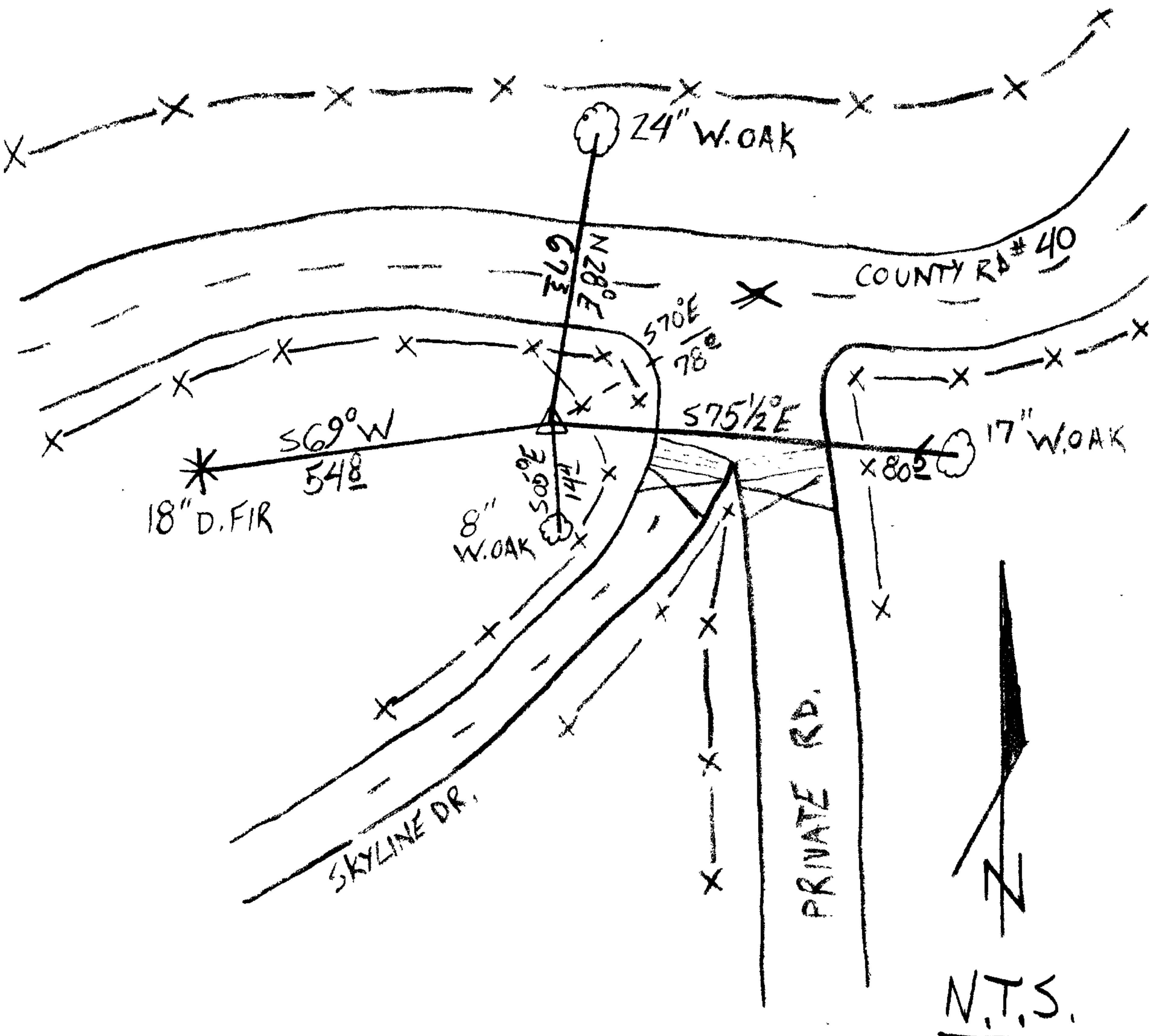
~~WE ACCEPT AND RENEW 1961 BC POSITION AS FOUND BUT TRAIN OF EVIDENCE IS NOT CLEAR BACK TO 1871 RESURVEY~~

MA

New Accessories

- A 17 INCH D.B.H. WHITE OAK SCRIBED "1/4 S35CS" BT ON A DOUBLE BLAZE, BEARS S75 1/2° E, 80<sup>5</sup> FEET DIST.
- AN 8 INCH D.B.H. WHITE OAK SCRIBED "1/4 S35CS" BT ON A DOUBLE BLAZE, BEARS S05° E, 14<sup>4</sup> FEET DISTANT.
- AN 18 INCH D.B.H. DOUGLAS FIR SCRIBED "1/4 S35CS" BT ON A DOUBLE BLAZE, BEARS S69° W, 54<sup>8</sup> FEET DISTANT.

Sketch of Monument, Accessories, and General Area



Location & Comments

MONUMENT IS IN GENTLEY ROLLING MIXED PASTURE AND WOODLAND JUST WEST OF INTERSECTION OF BOOMER HILL RD. (CO. RD. #40) AND SKYLINE DRIVE.

Comp. Declin. 15 3/4° E  
 Agency NCSO  
 Party Chief STEPHEN JOHN FLAUSE  
 Notekeeper Stephen John Flause  
 Witnesses MIKE KOCH, GARRETT MCGRAW

Address

Surveyor's Seal

REGISTERED PROFESSIONAL LAND SURVEYOR

*Randall W. Smith*  
 RENEWAL 6-30-2012

OREGON  
 JULY 25, 1990  
 RANDALL W. SMITH  
 2480