



RENEWAL

Monument Set (Procedure and Description)

Monument Detail

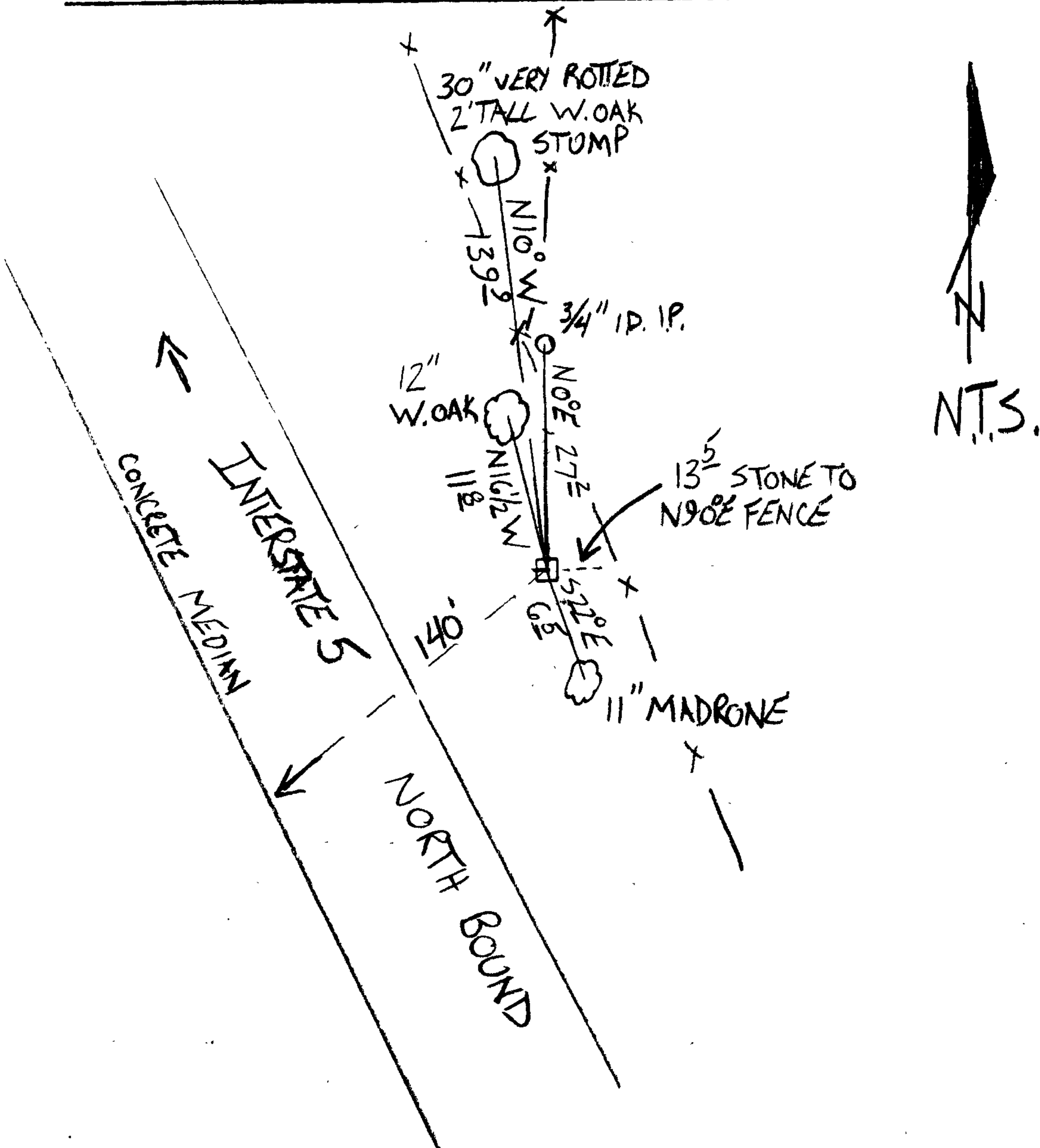
DO TO SOLID CONDITION OF STONE WE DO NOT SET  
 A BC MONUMENT.

New Accessories

AN 11 INCH D.B.H. MADRONE MARKED "SE DLC 40 CS" "BT" ON A DOUBLE BLAZE;  
 BEARS S 72° E, 6<sup>5</sup>/<sub>8</sub> FEET

A 12 INCH D.B.H. WHITE OAK MARKED "SE DLC 40 CS" "BT" ON A DOUBLE BLAZE;  
 BEARS N 16<sup>1</sup>/<sub>2</sub>° W, 11<sup>8</sup>/<sub>8</sub> FEET

Sketch of Monument, Accessories, and General Area



Location & Comments

MONUMENT IS ON GENTLE EAST  
 SLOPE IN REMNANT OAK WOODLAND  
 WITH OPEN PASTURE TO EAST AND  
 INTERSTATE HIGHWAY 5 TO WEST.

Comp. Declin. 15<sup>3</sup>/<sub>4</sub>° E  
 Agency DCSO  
 Party Chief STEPHEN J. FLAUSE  
 Notekeeper GARY MCGUIRE  
 Witnesses MIKE S. KOCH,  
STEPHEN J. FLAUSE

Address

Surveyor's Seal

REGISTERED  
 PROFESSIONAL  
 LAND SURVEYOR

*Handwritten signature and date:*  
 RANDALL W. SMITH  
 6-30-2012

OREGON  
 JULY 25, 1999  
 RANDALL W. SMITH  
 2489