

GOVERNMENT CORNER RESTORATION FORM

Date: 3-25-2011 By: JC

Township 29S Range 6W Sec. 11

County DOUGLAS This survey consists of:

State OREGON Date FEB. 25, 2011

No. 600500 Narrative: \_\_\_\_\_

Corner Rpt: 67/33-13

Corner Designation

S11	S12
S14	S13

DOUGLAS COUNTY

SURVEYOR  
Condition Report Only

Not Found

Renewed

Unrecorded

Surveyed In

Referenced Out

Previous Renewals 1919, 1962

Monument(s) Found: (Condition and Source)

AT A POSITION INDICATED BY O.B.T.S FOUND IN 1919 RENEWAL WE FIND A 1/2 INCH I. D. IRON PIPE WITH A 2 INCH TALL MACHINED COLLAR AT ITS TOP. MONUMENT IS PLUMB AND FIRMLY SET, PROTRUDING 6 INCHES ABOVE GROUND. PROBING CENTER OF FOUND PIPE GIVES GOOD EVIDENCE THAT 3/4 INCH IRON ROD IS SET AT ITS CENTER AND APPROX. 8 INCHES LOWER THAN ITS TOP (1919 RECORD CALLS FOR A 3/4" X 36" IRON BAR MONUMENT). MONUMENT IS 1 FOOT WEST FROM A NORTH-SOUTH FENCE.

MONUMENT DETAIL

Accessories Found:

TWO ORIGINAL BEARING TREES ARE FOUND:  
 A W. OAK 18" DIA. NOW A 42 INCH D.B.H. WHITE OAK WITH NO VISIBLE MARKS BEARS N00°W, 495± FEET DISTANT (AS PER ORIGINAL RECORD).  
 A W. OAK 12" DIA. NOW A 54 INCH D.B.H. TRIPLE TRUNK WHITE OAK WITH A FULLY HEALED REBLAZE FROM THE 1962 RESCRIBING (ON MOST NORTHERLY TRUNK). THE C.R.C. OF THIS TREE BEARS S87°W, 25± FEET DISTANT (AS PER ORIGINAL RECORD).

RENEWAL BEARING TREE FROM 1919 IS FOUND:  
 AN 8" W. OAK NOW A 28 INCH D.B.H. WHITE OAK WITH A FULLY HEALED DOUBLE BLAZE, BEARS N48'2°W, 79± FEET DISTANT (AS PER RECORD).

RENEWAL BEARING TREE FROM 1962 IS MISSING; A MORE RECENT FARM ROAD PASSES THROUGH THE RECORD POSITION.

RENEWAL

Monument Set (Procedure and Description)

Monument Detail

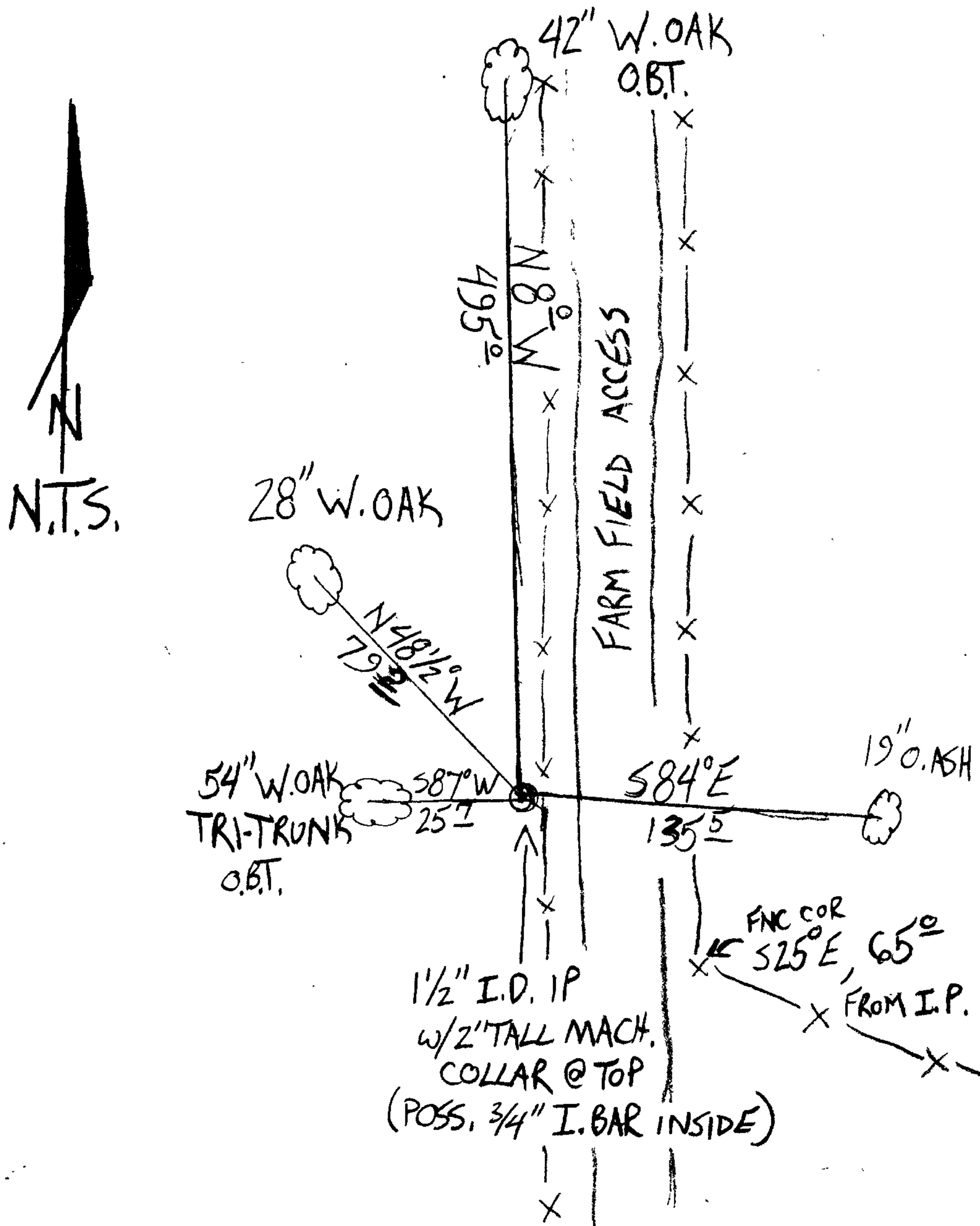
SOLIDLY SET MONUMENT IS ACCEPTED AS FOUND.

N/A

New Accessories

A 19 INCH D.B.H. OREGON ASH MARKED "T295R6WS13CS" "BT" ON A DOUBLE BLAZE; BEARS S84°E, 135<sup>5</sup> FEET DISTANT.

Sketch of Monument, Accessories, and General Area



Location & Comments

MONUMENT IS NEAR BOTTOM OF GENTLE EAST FACING SLOPE ON WEST EDGE OF BROAD SHALLOW NORTH RUNNING VALLEY.

Comp. Declin. 15<sup>3/4</sup>° E  
Agency DC50  
Party Chief STEPHEN JOHN FLAUSE  
Notekeeper Stephen John Flause  
Witnesses MIKE SEAN KOCH, GARRETT MCGRAW

Address

Surveyor's Seal  
REGISTERED PROFESSIONAL LAND SURVEYOR

Renewal 6-30-2012

OREGON  
JULY 25, 1990  
RANDALL W. SMITH  
2468