

GOVERNMENT CORNER RESTORATION FORM

Date: 3-17-2011 By: JC

This survey consists of:

Township 29S Range 06W Sec. 35

County DOUGLAS

State OREGON

Date FEB 16 2011

No. 600140

Narrative: _____
Corner Rpt: CS 67/33-8

Corner Designation

1/4
S35 | S36

- DOUGLAS COUNTY
SURVEYOR
- Condition Report Only
 - Not Found
 - Renewed
 - Unrecorded
 - Surveyed In
 - Referenced Out

Previous Renewals 1962 DCSO

Monument(s) Found: (Condition and Source)

A 2 1/2 INCH DIAMETER BRASS CAP (MARKED AS AT RIGHT) ON A 1 1/2 INCH O.D. GALVANIZED IRON PIPE FIRMLY SET AND PROTRUDING 10 INCHES ABOVE GROUND. MONUMENT IS 1 FOOT WESTERLY FROM 7 FOOT TALL 5 INCH DIAMETER PRESSURE TREATED WOOD FENCE CORNER POST WITH FENCES RUNNING EAST AND S64°W

COUNTY SURVEYORS OFFICE

T29S R6W

1/4 S35 | S36

1962

Accessories Found:

BOTH ORIGINAL 1854 REFERENCES ARE FOUND.

A W. OAK 18" DIA. NOW A 36 INCH D.B.H. WHITE OAK WITH A PARTIALLY REHEALED PREVIOUSLY OPENED BLAZE SHOWING AND NOW ROTTED FACE WITH NO SCRIBING VISIBLE, BEARS N88 1/2° E, 196° FEET DISTANT (ORIGINAL RECORD S89 1/2° E, 246° FT. WHICH WAS REVISED TO S89 1/2° E, 196° FT. WHEN SCRIBING WAS FOUND IN 1962 RENEWAL).

A LARGE ISOLATED ROCK REASONABLY DESCRIBED AS MEASURING 13 x 3 1/2 x 4 FEET HIGH THE HIGH NEAR CENTER OF WHICH, BEARS S43 1/2° W, 95° FEET DISTANT (AS PER RECORD). 2 IN " MARKED ON ROCK IN 1962 IS NOT FOUND (SURFACE OF ROCK HAS WEATHERED).

FROM 1962 THE NEW BT IS FOUND.

A 10" W. OAK NOW AN 11 INCH D.B.H. WHITE OAK WITH A FULLY HEALED SINGLE BLAZE, BEARS S67 1/2° E, 134° FEET DISTANT (AS PER RECORD).

RENEWAL

Monument Set (Procedure and Description)

Monument Detail

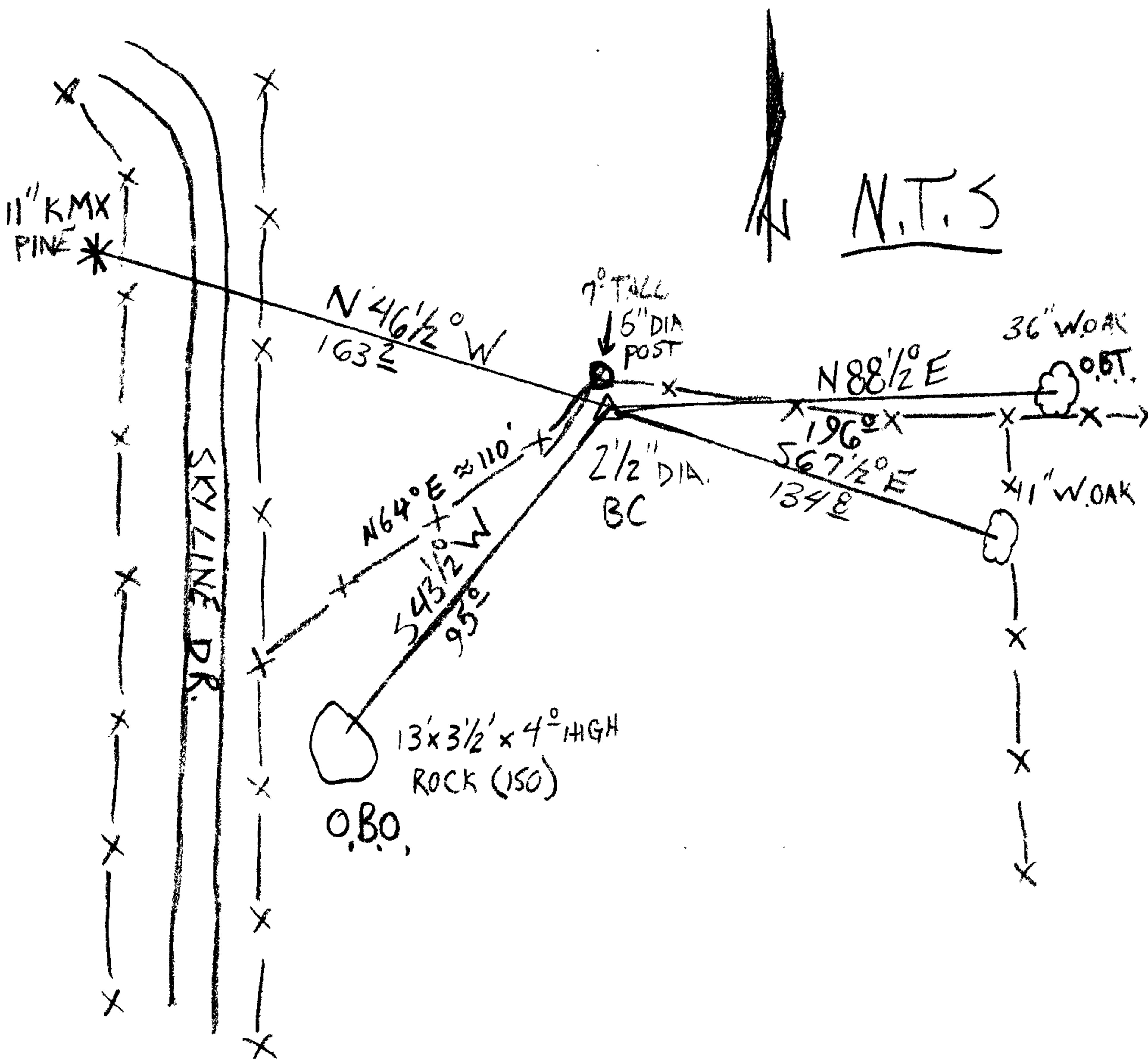
N/A

~~MONUMENT POSITION ACCEPTED AS FOUND, BEARING ERROR TO O.B.T. COULD BE DUE TO READING WRONG QUADRANT ON COMPASS DIAL; ORIGINAL RECORD BEARING WOULD INDICATE A MONUMENT POSITION INCONSISTENT WITH EDONO ROCK REFERENCE~~

New Accessories

A "K.M.X" PINE, 11 INCH D.B.H., SCRIBED "XCS" "BT" ON A DOUBLE BLAZE WITH "XCS" BLAZE BEGINNING 2 1/2 FEET ABOVE THE LOWER BLAZE BEARS N 46 1/2° W, 163 1/2'

Sketch of Monument, Accessories, and General Area



Location & Comments

MONUMENT IS IN OPEN PASTURE AT EDGE OF NEARLY FLAT AREA AND NEAR TOP OF GENTLE NORTHERLY SLOPE. MONUMENT IS APPROXIMATELY 100 FT. EAST FROM SKYLINE DRIVE EAST R/W FENCE.

Comp. Declin. 15 3/4° E
Agency DCSD
Party Chief STEPHEN JOHN FLAUSE
Notekeeper Stephen John Flause
Witnesses MIKE KOCH, GARRETT MCGRAW

Address

Surveyor's Seal
REGISTERED
PROFESSIONAL
LAND SURVEYOR

Renewal 6-30-2011

OREGON
JULY 25, 1990
RANDALL W. SMITH
2489