

GOVERNMENT CORNER RESTORATION FORM

Date: 3-17-2011 By: JC

This survey consists of:

Township 30S Range 5W Sec. 22

County DOUGLAS Map: _____

State OREGON Date FEB. 8, 2011

No. 052030 Narrative: _____
Corner Rpt: CS 67/33-6

Corner Designation

SW
DLC 52

DOUGLAS COUNTY
SURVEYOR

- _____ Condition Report Only
- _____ Not Found
- _____ Renewed
- _____ Unrecorded
- _____ Surveyed In
- _____ Referenced Out

Previous Renewals 1923

MONUMENT DETAIL

Monument(s) Found: (Condition and Source)

N/A

FROM THE 1923 B.B IRVING RENEWAL
 A 1/4 X 4 INCH WIDE CHANNEL IRON (TOP PARTLY
 BEAT OVER FROM MONUMENT BEING DRIVEN IN
 GROUND) IS FOUND PLUMB AND FIRMLY SET
 APPROX. 1⁰ FOOT BELOW GROUND SURFACE.

Accessories Found:

NO EVIDENCE OF THE ORIGINAL W. OAK B.T. IS FOUND (AREA PLOWED).

THE 1923 MONUMENT FOR THE S.E. CORNER OF DLC 49 (SEE 2011 RENEWAL OF 049060 FOR COMPLETE DESCRIPTION) BEARS NO⁰E, 153⁰ FEET DISTANT.

(AGREES WITH RECORDS CS 7/29 AND ORIG. DLC RECORDS)

NO EVIDENCE OF 1923 REFERENCES IS FOUND. LOCATION OF CEDAR B.T FALLS IN GRAVEL PIT, BARN NO LONGER EXISTS.

RENEWAL

Monument Set (Procedure and Description)

Monument Detail

FOUND MONUMENT IS IN GOOD STABLE CONDITION
WE DO NOT DISTURB.

N/A

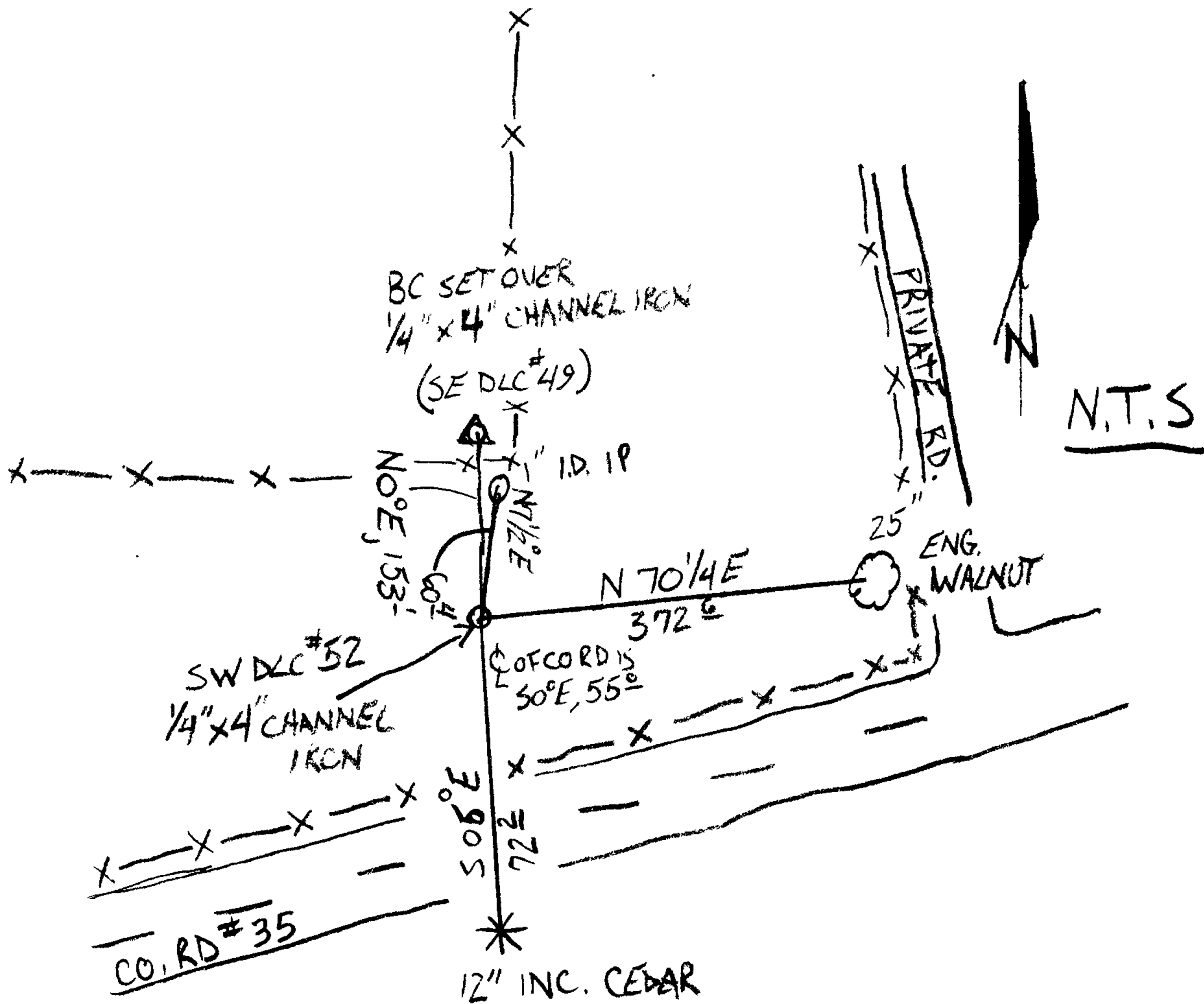
New Accessories

A 25 INCH D.B.H. ENGLISH WALNUT SCRIBED "SW DLC 52 CS" "BT" ON A DOUBLE BLAZE,
BEARS N 70 1/4° E, 372 1/2 FEET DISTANT.

A 12 INCH D.B.H. INCENSE CEDAR SCRIBED "SW DLC 52 CS" "BT" ON A DOUBLE BLAZE
BEARS S 05° E, 72 1/2 FEET DISTANT.

A 1 INCH I.D. IRON PIPE SET APPROX 1 FOOT BELOW GROUND (1954 WENDEROTH SEE
CS. 45/137) BEARS N 7 1/2° E 60 1/2 FEET DISTANT.

Sketch of Monument, Accessories, and General Area



Location & Comments

MONUMENT IS FLAT FENCED
PASTURE APPROXIMATELY 55 FEET
NORTH OF COUNTY ROAD.

Comp. Declin. 15 3/4° E
Agency DC SO
Party Chief STEPHEN JOHN FLAUSE
Notekeeper Stephen John Flause
Witnesses MIKE KOCH
GARRETT MCGRAW

Address

Surveyor's Seal
REGISTERED
PROFESSIONAL
LAND SURVEYOR

Renewal 6-30-2012

OREGON
JULY 25, 1990
RANDALL W. SMITH
2400