

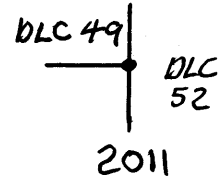
RENEWAL

Monument Set (Procedure and Description)

A 2 3/8 INCH DIAM. BRASS CAP (MARKED AS AT RIGHT) ON A 1/4 X 32 INCH IRON PIPE, IS SET ON SOUTH EDGE OF FOUND CHANNEL IRON WITH TOP CENTER OF B.C. 6 INCH HIGHER THAN AND PLUMB OVER TOP CENTER OF SAME. TOP OF BRASS CAP MONUMENT IS BURIED APPROX. 6 INCHES BELOW SURFACE TO PROTECT IT FROM MOWING.

Monument Detail

DOUGLAS COUNTY SURVEYOR
T30S R5W



New Accessories

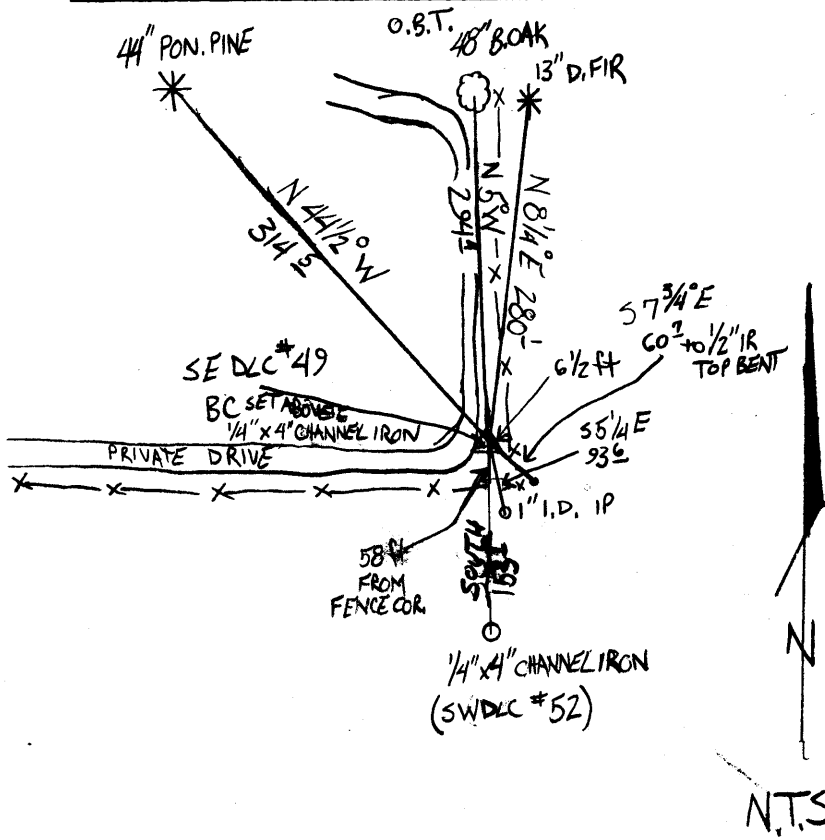
A 44 INCH D.B.H. PONEROSA PINE SCRIBED "SE DLC 49 CS" "BT" ON A DOUBLE BLAZE, BEARS N 44 1/2° W, 314 5 FEET DISTANT

A 13 INCH D.B.H. DOUGLAS FIR SCRIBED "SE DLC 49 CS" "BT" ON A DOUBLE BLAZE, BEARS N 8 1/4° E, 280 1/2 FEET DISTANT.

A 1/2 INCH DIAM. IRON ROD (NOW WITH BENT TOP) NOTED IN 1954 UNDER OTHER RENEWAL BEARS S 73/4° E, 602 FEET DISTANT.

1963 BYRON - Corrected 2/6/2018 SJF

Sketch of Monument, Accessories, and General Area



Location & Comments

MONUMENT IS 6 1/2 FT. WEST FROM A NORTH-SOUTH FENCELINE AND NEAR EAST EDGE OF GAVEL DRIVE-WAY IN FLAT OPEN PASTURE.

Comp. Declin. 15 3/4° E
Agency DCSO
Party Chief STEPHEN JOHN FLAUSE
Notekeeper Stephen John Flause
Witnesses MIKE KOCH
GARRETT MCGRAW

Address

Surveyor's Seal
REGISTERED
PROFESSIONAL
LAND SURVEYOR

Handwritten signature
RENEWAL 6-30-2012

OREGON
JULY 25, 1900
RANDALL W. SMITH
248

N.T.S.