



RENEWAL

Monument Set (Procedure and Description)

SET 5/8" X 60" LONG IRON ROD WITH  
DCSO ALUM. CAP. STAMPED  
"2010" IN MIDDLE OF FOUND  
L.P. PROTRUDES 1 FT OUT OF  
GROUND.

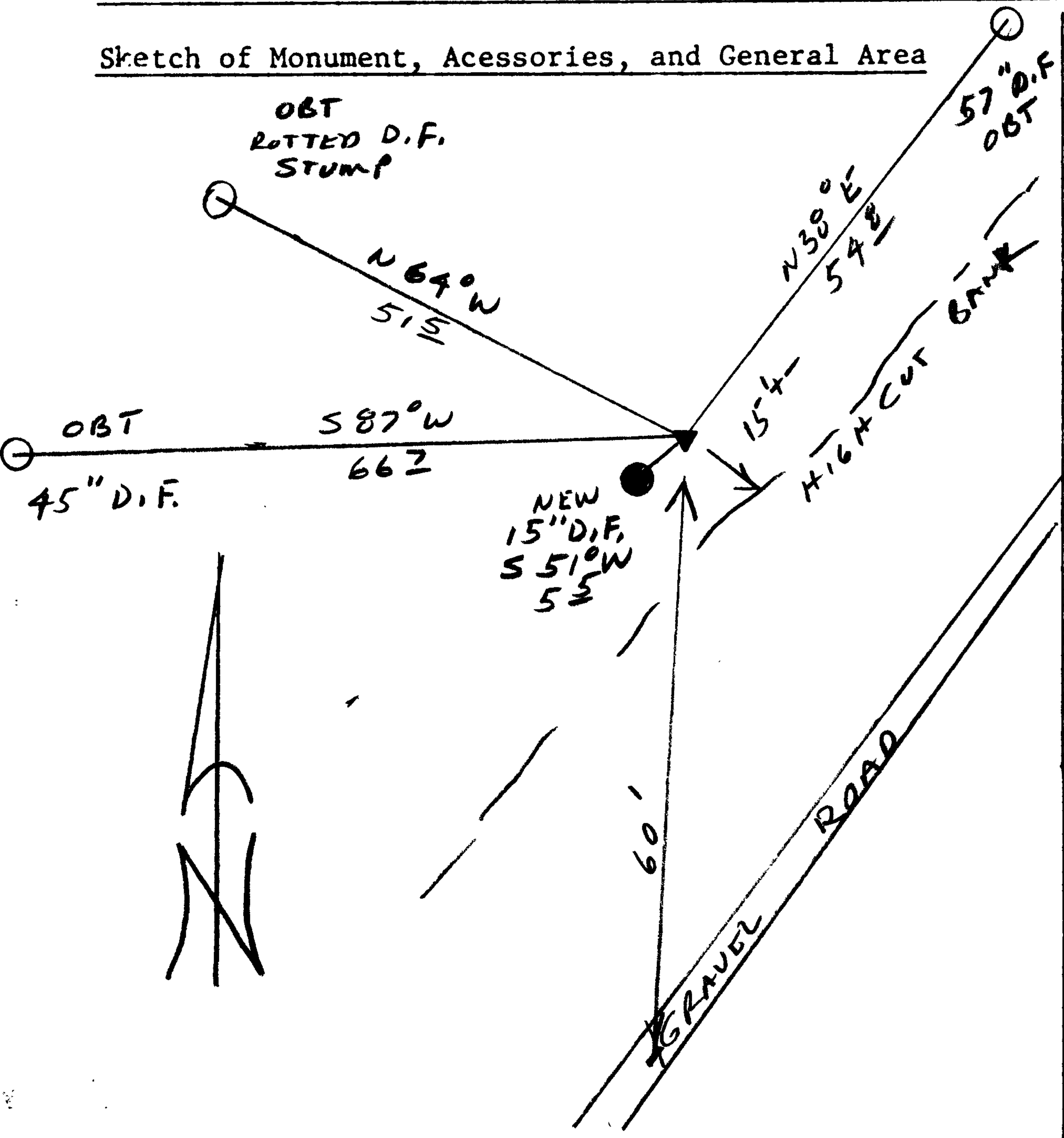
Monument Detail

N/A

New Accessories

15" DIA. D. FIR DOUBLE BLAZED AND SCRIBED "T22S R11W  
S35CS BT" BEARS S51°W, 5.5 FT.  
NO TREES SE OF CORNER

Sketch of Monument, Accessories, and General Area



Location & Comments

CORNER LIES 60 FT  
NORTH OF THE CENTER  
LINE OF A GRAVEL ROAD.

Comp. Declin. 16° E  
Agency DCSO  
Party Chief RANDY SMITH  
Notekeeper STEVE FLAUSI  
Witnesses RANDY SMITH

Address

Surveyor's Seal

REGISTERED  
PROFESSIONAL  
LAND SURVEYOR

*Randall W. Smith*

OREGON  
JULY 25, 1990  
RANDALL W. SMITH  
2488

RENEWAL  
6-30-2010

CORNER INFO BROUGHT TO PCSO OFFICE  
 BY MARK HEIMBURGER

S 52° E 74.6

STATE OF OREGON—STATE BOARD OF FORESTRY

Salem, Oregon

CS-S-1-1

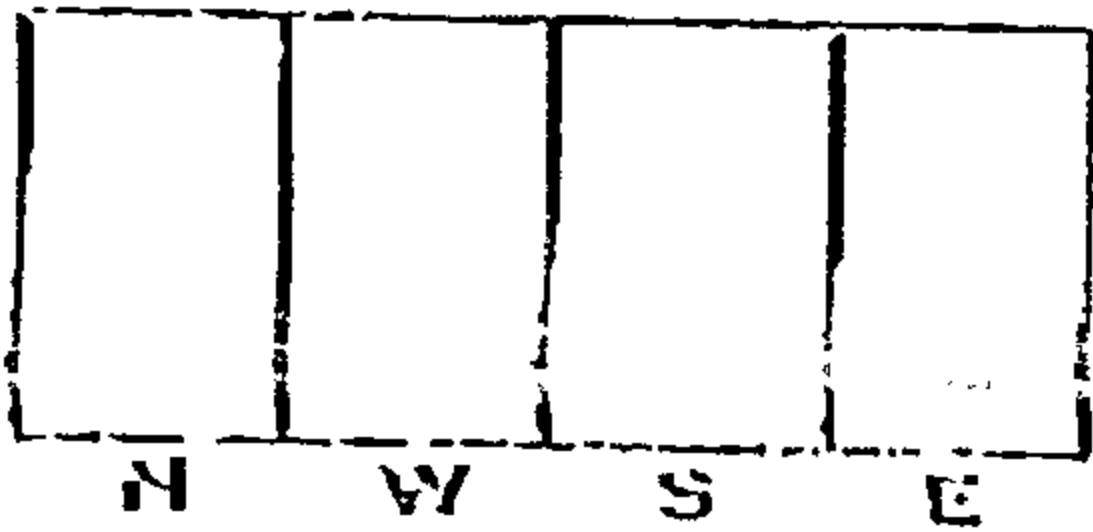
CORNERS OF THE PUBLIC SURVEY

T. 22S R. 11W Mer. section 25 26 35 36  
 Corner common to Sections 25, 26, 35, and 36

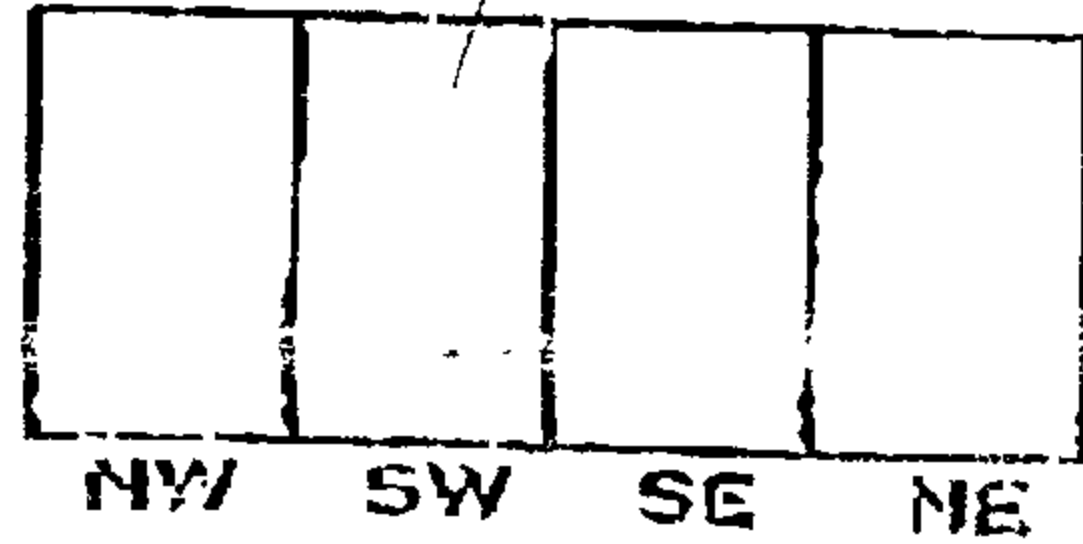
Corner consists of a iron pipe (not) in place  
 State condition Fair

Dimensions above ground 6 inches  
 Sketch grooves, letters, figures or notches, on proper face or edge.

CARDINAL POSITION



DIAGONAL POSITION



Found of \_\_\_\_\_ is located \_\_\_\_\_

Pits are located \_\_\_\_\_

Sketch markings of Bearing Trees (or Rocks) in proper box and fill blanks below, giving bearings from Corner to Trees and Distances in Links.

|        |        |        |  |
|--------|--------|--------|--|
| closed | closed | closed |  |
|        |        |        |  |

|          |       |       |                |
|----------|-------|-------|----------------|
| Species  | D fir | D fir | D fir          |
| Diameter | 8"    | 10"   | 10" orig dia's |
| Bearing  | N38*E | S87*W | N64*W          |
| Distance | 54.8' | 66.7' | 51.5'          |

Do you believe this to be a genuine Land Office Corner? Yes  
 If not, why? \_\_\_\_\_

Ronald O. Fox

(Signature)

Forester

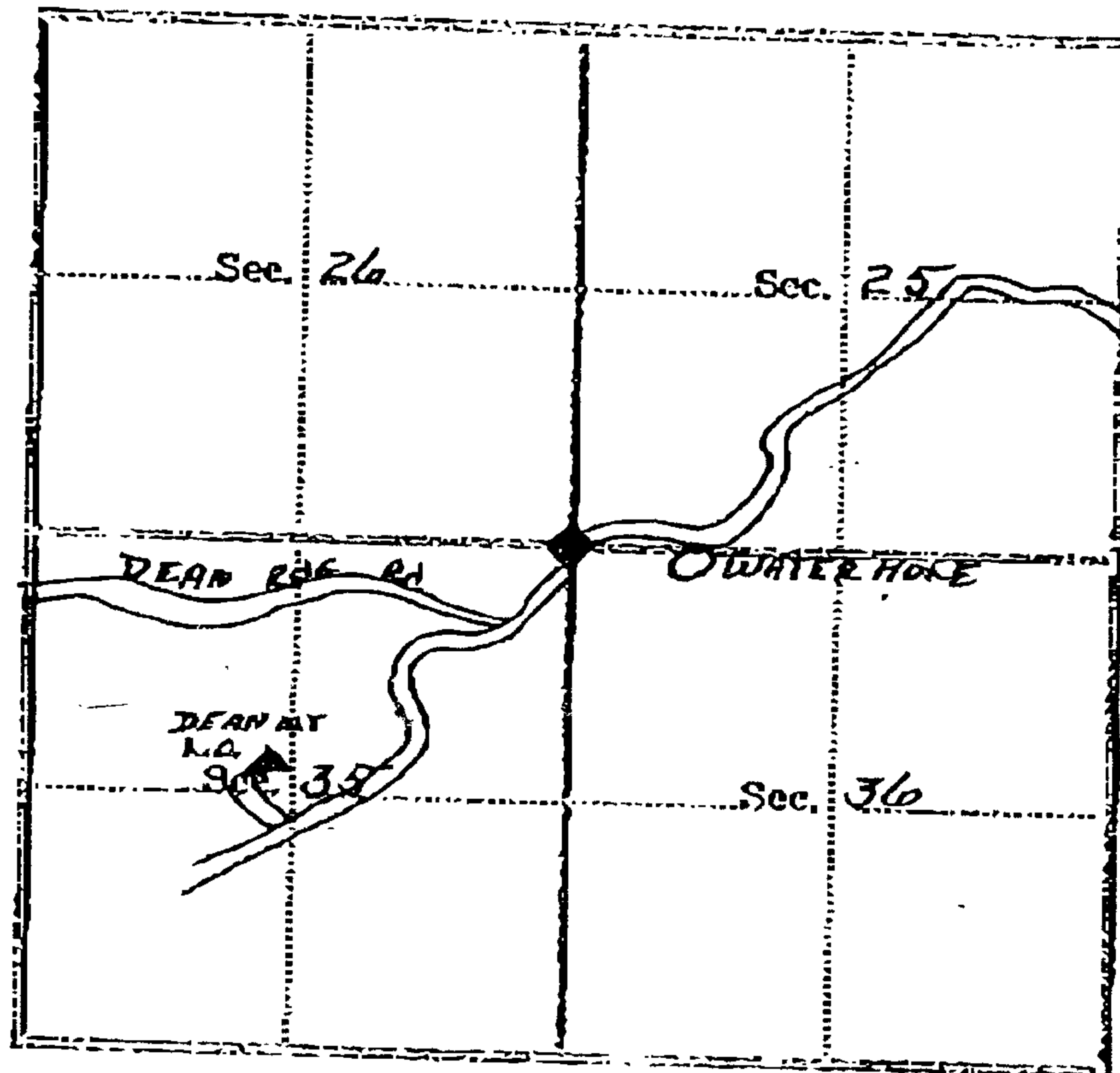
(Title)

6-22-62

(Date)

State Printing 38612

T. 22S R. 11W Mer. section 25 26 35 36  
 (Make sketch of topography near Corner and show section line markers thus "X")



Metal Location Poster is on a \_\_\_\_\_  
 tree \_\_\_\_\_ inches diameter, on the \_\_\_\_\_  
 side of \_\_\_\_\_ from which  
 this Corner bears \_\_\_\_\_ (Bearing) \_\_\_\_\_ Chains.  
 Section line marker between Secs. \_\_\_\_\_ and \_\_\_\_\_ is on  
 a \_\_\_\_\_ on the \_\_\_\_\_  
 located \_\_\_\_\_ chains E, W, N, S, from Sec. Cor.; 1/2 Cor.; Wit. Cor.  
 (Tree, post, etc.) (Name of road, trail, etc.)  
 (Cross out nonapplicable)

Give any further facts needed to find Corner again:  
 Corner lies just off N side of Umpqua  
 rd about 700' N of the elk willow waterhole.