

GOVERNMENT CORNER RESTORATION FORM

Date: 10/9/09 By: JC

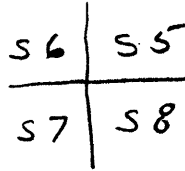
Township 29S Range 5W Sec. 5 County DOUGLAS

This survey consists of:

State OR Date 10-7-2009 No. 200600

Narrative:  
Corner 67/28-38

Corner Designation



DOUGLAS COUNTY  
SURVEYOR  
Condition Report Only

- Not Found
- Renewed
- Unrecorded
- Surveyed In
- Referenced Out

Previous Renewals 1952, 1962, 1980, 2007

MONUMENT DETAIL

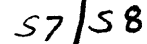
Monument(s) Found: (Condition and Source)

1980 2 1/2" DIA BRASS CAP ON A  
1 1/2" O.D. IRON PIPE, PROTRUDES  
5" OUT OF GROUND PER M84-58

T 29S R5W



1962 2 1/2" DIA BRASS CAP ON A  
1 1/2" O.D. IRON PIPE, PROTRUDES  
16" OUT OF GROUND PER 1962  
DCSO RENEWAL, REPORTED AS  
DESTROYED IN 1980



PLS 866  
1980

1962 BC/IP BEARS N 74°W, 3.8 FT  
FROM 1980 BC/IP.

SEE BACK \*

Accessories Found: 11  
FROM 1980 BC/IP

BADLY BENT METAL FENCE POST BEARS S 24 3/4° E, 25.0 FT  
(REC S 23° 12' E 24.1 FT) 1980

STRAIGHT METAL FENCE POST BEARS N 40 1/4° E, 26.0 FT  
(REC N 44° 05' E, 26.0 FT) 1980

BADLY ROTTED 1 1/2 FT TALL BURNT OAK STUMP  
BEARS N 39 1/4° W, 31.0 FT (REC N 33° W, 31.0 FT) OBT

1/2" I.R. PROTRUDES 5" OUT OF GROUND  
BEARS S 49 1/2° E, 70.0 FT (SOURCE UNKNOWN)

1/2" I.R. PROTRUDES 5" OUT OF GROUND  
BEARS S 66 1/2° E, 112.5 FT (SOURCE UNKNOWN)

(BEARING BETWEEN FD 1/2" I.R.'S IS N 89 1/2° E, 50.0 FT)

RENEWAL

Monument Detail

~~Monument Set (Procedure and Description)~~

★

1980 BC/IP WAS USED ON A RECENT SURVEY, BEEN IN PLACE NEARLY 30 YEARS AND SET FROM AN ORIG. 135 IN 1980, 1962 BC/IP WAS REPORTED AS DESTROYED, I HAVE A DIFFICULT TIME BELIEVING RUPPERT WOULD HAVE MISSED A BC/IP THAT EXTENDED 16" OUT OF GROUND, LESS THAN 4 FT FROM HIS MONUMENTED CORNER.

IN ORDER TO STOP FUTURE CONFUSION WE SAWED OFF THE THE BRASS CAP FROM THE 1962 MONUMENT.

N/A

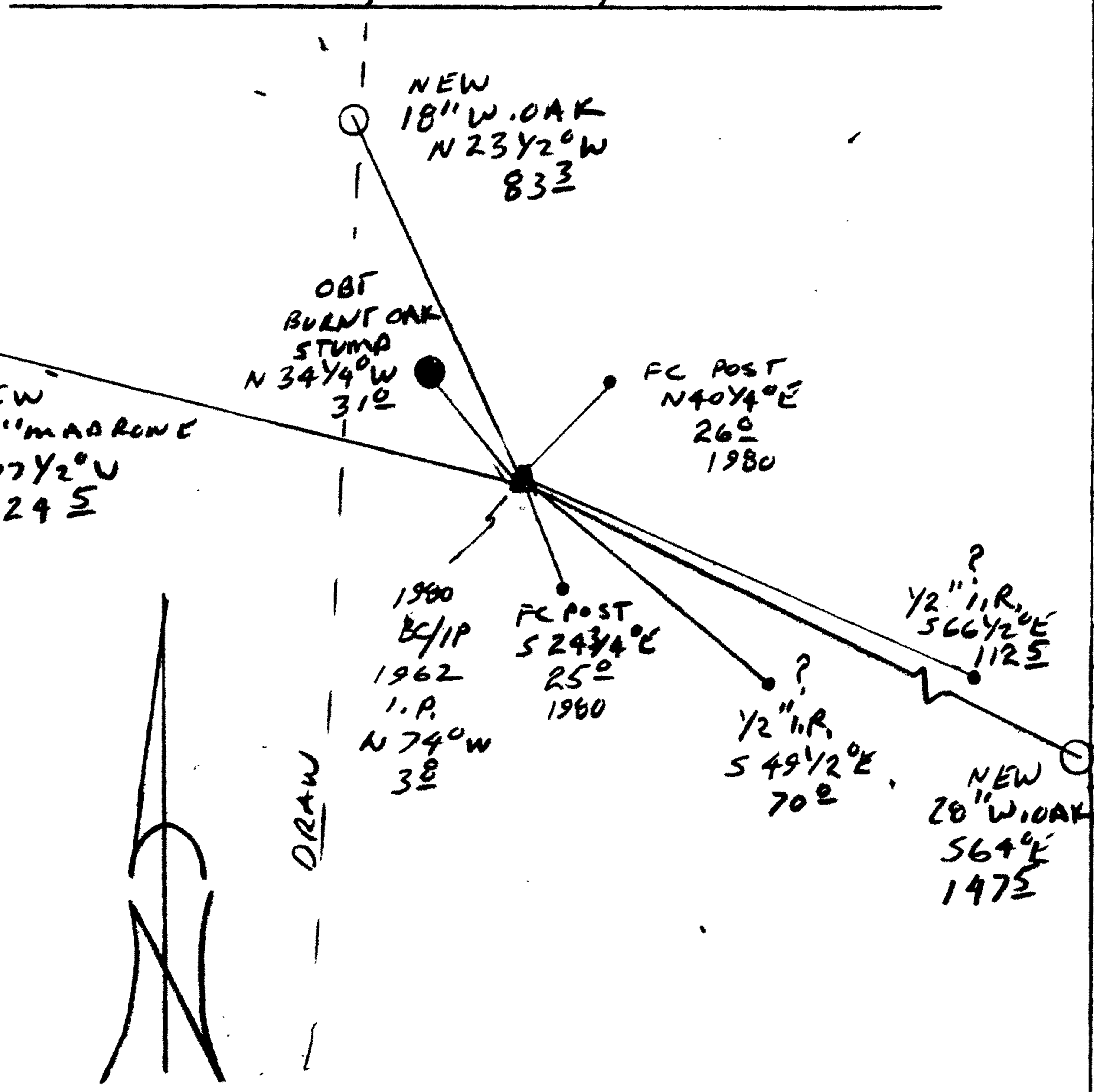
New Accessories

18" DIA. W. OAK, SINGLE BLAZED 6 FT ABOVE GROUND " X 13T " BEARS N 23 1/2° W, 83.3 FT (HIGH BLAZED BECAUSE OF FIRE SCARS)

26" DIA. MADRONE DOUBLE BLAZED AND SCRIBED " T293 R5W S6 CS BT " BEARS N 72 1/2° W 124.5 FT

28" DIA. W. OAK DOUBLE BLAZED AND SCRIBED " T293 R5W S8 CS BT " BEARS S 64° E, 147.5 FT

Sketch of Monument, Accessories, and General Area



Location & Comments

CORNER LIES APPROX 25 FT EAST OF A N'LY RUNNING DRAW, IN A LARGE PATCH OF BLACK BERRIES. AREA AROUND DRAW SHOWS SIGNS OF BEING IN A SLIDE

Comp. Declin. 16 1/4° E  
 Agency DCSO  
 Party Chief RANDY SMITH  
 Notekeeper RANDY SMITH  
 Witnesses STEVE FLAUS

Address

Surveyor's Seal

REGISTERED PROFESSIONAL LAND SURVEYOR

*Randy Smith*  
 LICENSE 6-30-2010

OREGON  
 JULY 25, 1990  
 RANDALL W. SMITH  
 2400