

GOVERNMENT CORNER RESTORATION FORM

Date: 9/15/09 By: JC

Township 285 Range 8W Sec. 13

County DOUGLAS Map: _____

This survey consists of: _____

State OR Date 9-2-09

No. 600440 Narrative: _____

Corner Rpt: 67/28-36

Corner Designation

1/4 S14 | S13

DOUGLAS COUNTY
SURVEYOR

Condition Report Only

Not Found

Renewed

Unrecorded

Surveyed In

Referenced Out

MONUMENT DETAIL

Previous Renewals 1971 M 41-67

Monument(s) Found: (Condition and Source)

1971 1" I.D. X 32" LONG IRON
PIPE OUT OF GROUND.

N/A

Accessories Found:

8" NOW 9" DIA. ASH WITH PARTIALLY HEALED DOUBLE BLAZE
SCRIBING VISIBLE "WC 1/4 S13 BT"

RENEWAL

Monument Set (Procedure and Description)

SET 1971 IRON PIPE AT 1/4
 CORNER POSITION DETERMINED FROM
 SE WC. BT N54 1/2°W, 13.0 FT THENCE
 N1 1/4°E 11.3 FT. I.P. PROTRUDES 6"
 OUT CREEK BOTTOM.

FROM 1971 I.P. IN CRK BOTTOM
 A 2 1/2" DIA. BRASS CAP ON A 1 1/2" DIA
 BY 32" LONG IRON PIPE IS SET AS
 AN R.M. CORNER WEST 50.0 FT
 DCSO R.M. BC I.P. PROTRUDES 6"
 OUT OF GROUND

Monument Detail

DOUGLAS COUNTY SURVEYORS
 T 28 S
 R M R
 1/4 S14/S13 8 W
 COR EAST
 50 FT
 2009

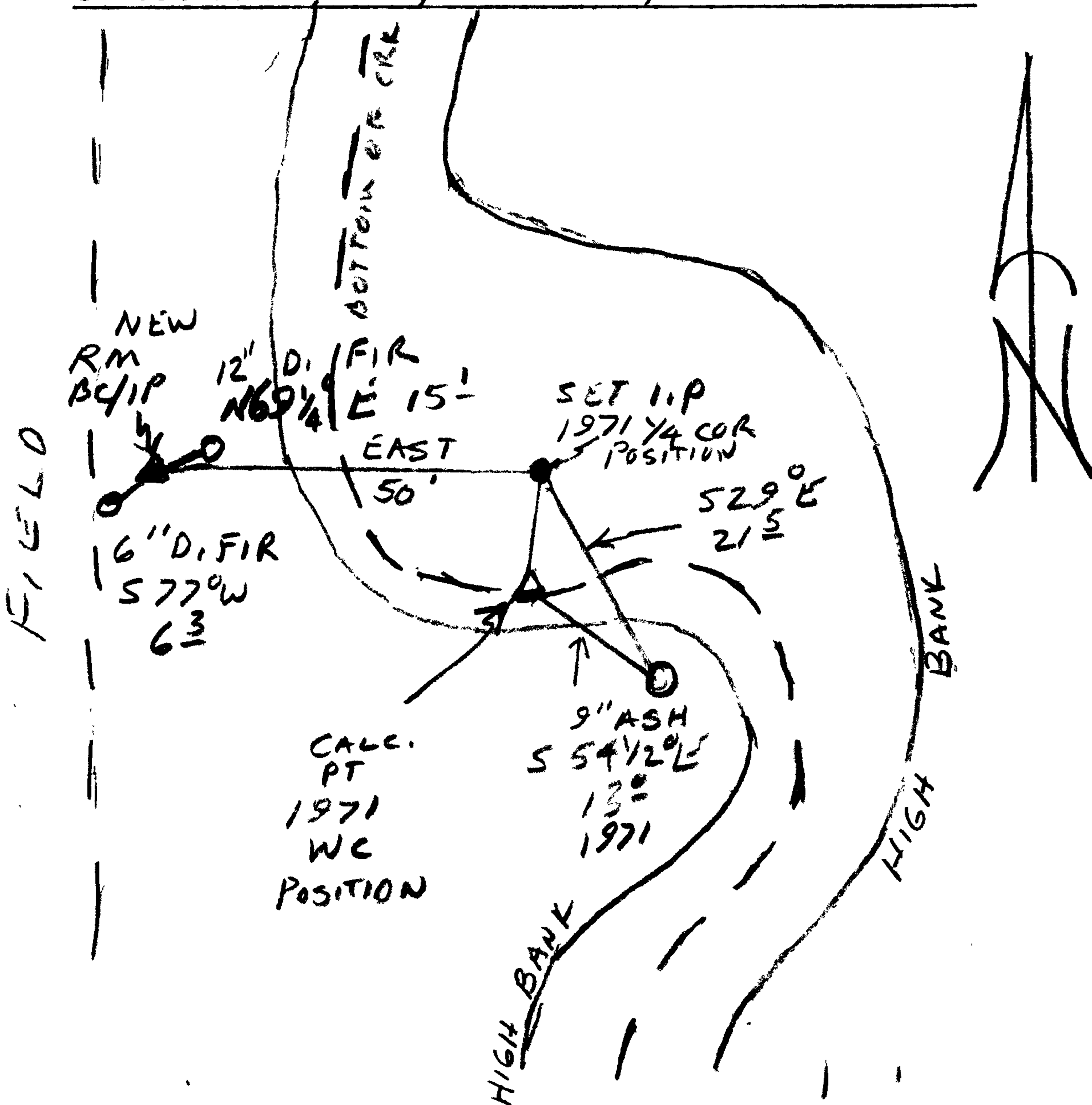
New Accessories

1971 SW WC. BT BEARS S29°E, 21.5 FT
 FROM SET I.P. AT 1/4 CORNER IN CRK BOTTOM.

FROM 2009 DCSO R.M. BC I.P.
 12" DIA. D. FIR DOUBLE BLAZED & SCRIBED "RM 1/4 S14 CS BT" BEARS N69 1/4°E, 15.1 FT

6" DIA. D. FIR DOUBLE BLAZED & SCRIBED "RM S14 1/4 CS BT" BEARS S77°W, 6.3 FT

Sketch of Monument, Accessories, and General Area



Location & Comments

1971 1/4 CORNER AND
 WC. CORNER POSITIONS
 NOW BOTH FALL IN
 CREEK BOTTOM

WE PREPARE POSITION OF
 1971 CORNER PER M41-67

Comp. Declin. 17 1/4° E
 Agency DCSO
 Party Chief RANDY SMITH
 Notekeeper RANDY SMITH
 Witnesses STEVE FRAUSE

Address

Surveyor's Seal
 REGISTERED
 PROFESSIONAL
 LAND SURVEYOR

Randy W. Smith

OREGON
 JULY 25, 1990
 RANDALL W. SMITH
 2488

RENEWAL 6-30-2010