

RENEWAL

Monument Set (Procedure and Description)

SET 2 1/2" DIA. BRASS CAP ON A 1 1/2"
 BY 32" LONG IRON PIPE AT A
 POSITION DETERMINED FROM OBT.
 BC/IP SET FLUSH WITH GROUND.
 METAL POST SET 1 FT NORTH

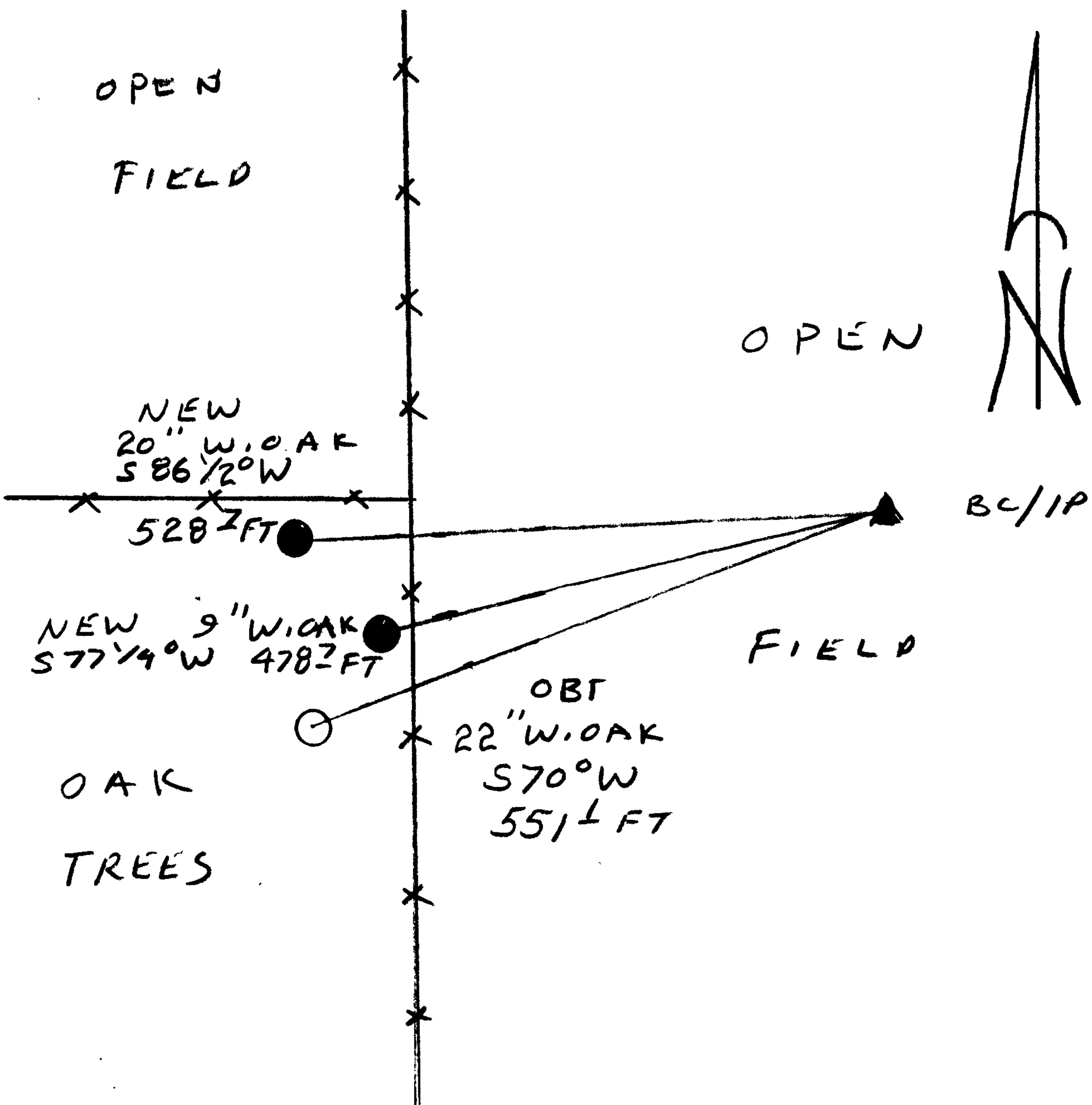
Monument Detail

DOUGLAS COUNTY SURVEYORS
 T 27 S
 1/4 S 35 R
 S 2 W
 T 28 S
 2009

New Accessories

20" DIA W. OAK DOUBLE BLAZED AND SCRIBED "1/4 S 2 CS BT"
 BEARS S 86 1/2° W, 528.7 FT
 9" DIA W. OAK DOUBLE BLAZED AND SCRIBED "1/4 S 2 CS BT"
 BEARS S 77 1/4° W, 478.7 FT
 NO TREES OTHER THAN IN SW QUADRANT

Sketch of Monument, Accessories, and General Area



BTS = BAUGHMAN TECHNICAL SERVICE
 Location & Comments 4-30-2009
 KRIS DEGROOT OF BTS ASKED
 THE SURVEYORS OFFICE TO
 LOOK INTO A TREE THEY
 FELT MIGHT BE AN ORIG. BT.
 BTS DETERMINED POSITION OF
 CORNER FROM OBT BASED ON
 GPS TRUE BEARINGS, ALSO
 TIED IN NEW BT'S
 Comp. Declin. TRUE NORTH (GPS)
 Agency DCSO + BTS
 Party Chief RANDY SMITH
 Notekeeper RANDY SMITH
 Witnesses LESTER FANNING
 STEVE FLAUSE
 SCOTT MCCURDY
 Address

Surveyor's Seal
 REGISTERED
 PROFESSIONAL
 LAND SURVEYOR

Randall W. Smith

OREGON
 JULY 25, 1990
 RANDALL W. SMITH
 2488

RENEWAL 6-30-2010