

GOVERNMENT CORNER RESTORATION FORM

FEB 9 2009 FILED
 Date: FEB 9 2009 By: JC

Township 27S Range 7W Sec. 10

County DOUGLAS

This survey consists of:

State OR

Date 2-3-2009

No. 440508

Narrative:
 Corner Rpt: 67/28-12

Corner Designation

$\frac{1}{4} \frac{S10}{S15}$

**DOUGLAS COUNTY
 SURVEYOR**

Condition Report Only

Not Found

Renewed

Unrecorded

Surveyed In

Referenced Out

MONUMENT DETAIL

Previous Renewals 1-89, 1960, 1984

Monument(s) Found: (Condition and Source)

FD 2 1/2" DIA BRASS CAP ON A
 1 1/2" O.D. IRON PIPE THAT
 PROTRUDES 17" OUT OF GROUND
 IN N/W FENCE (1960)

COUNTY SURVEYORS OFFICE
 T27S R7W
 WIT. COR.

S10

S15

30' SOUTH

TO 1/4 COR

1960

Accessories Found:

BRG + DIST TAKEN FROM WIC.

16" NOW 25" DIA 3FT HIGH W/OAK STUMP WITH A
 PORTION OF 1960 BLAZE (FULLY HEALED) BEARS N22 3/4°E
 101.2 FT. (AGREES WITH 1984 REC) OBT SOLID STUMP
 (REST OF TREE LATER CUT FOR FIREWOOD; COMPLETE 1855 AND 1960 SCRIBING FOUND)
 1960 SE BT GONE

24" NOW 35" DIA. W/OAK WITH AN OPENED BLAZE NO SCRIBING VISIBLE;
 BEARS S25 1/4°E, 111.5 FT (AGREES WITH 1984 REC) OBT
 (COMPUTED RECORD WOULD BE S23 3/4°E 111.1 FT USING
 COMBINATION OF 1855 AND 1960 INFORMATION)

C.S. File No 67/28-12

RENEWAL

Monument Set (Procedure and Description)

Monument Detail

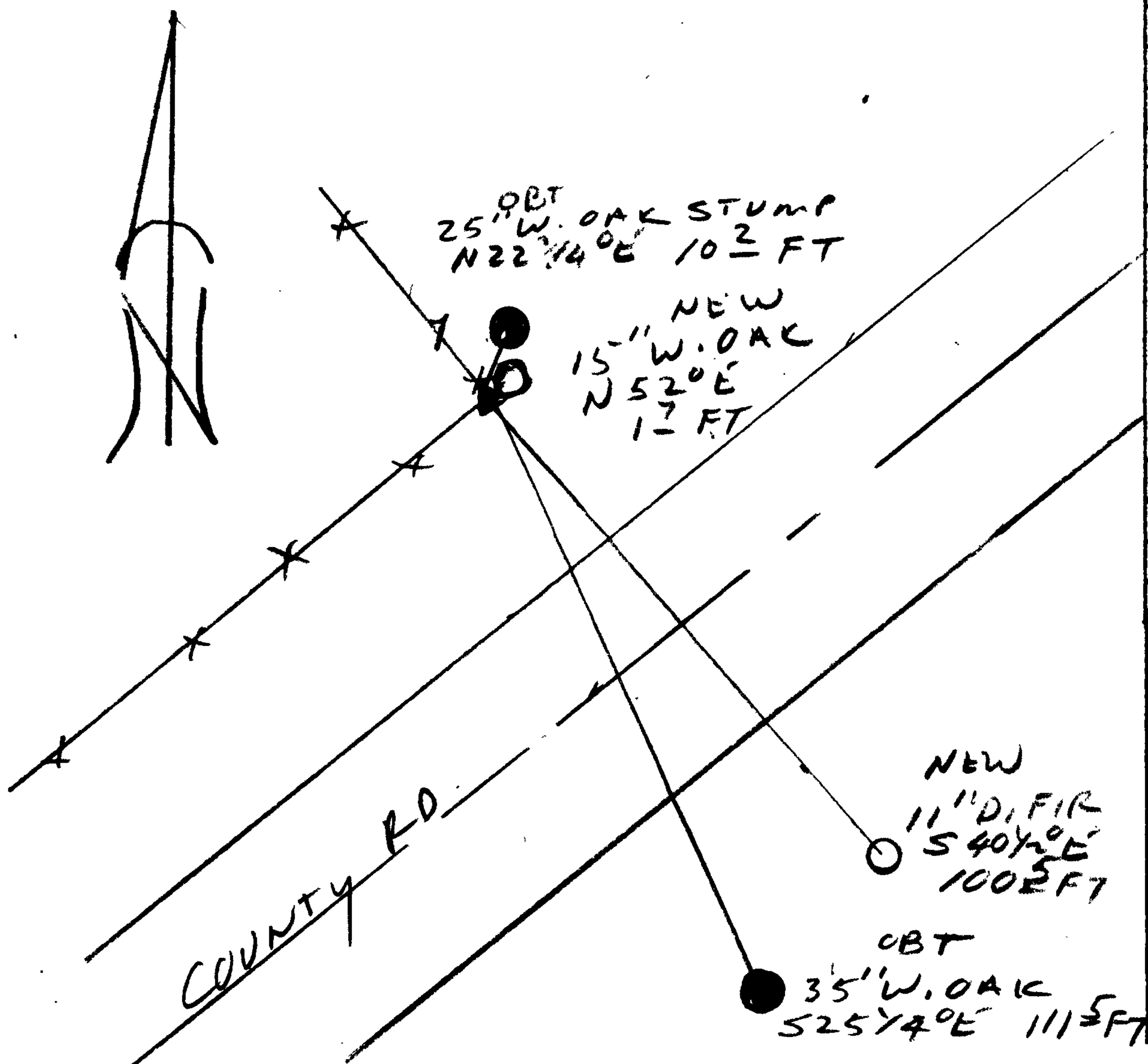
MOUND OF STONE SET
AROUND BASE OF REIP

N/A

New Accessories 626 + DIST FROM W.C.

15" DIA. W. OAK IN R/W FENCE SOME WIRE POSSIBLE INSIDE
TREE ~~DOUBLE BLAZED AND SCRIBED~~ "WC 1/4 S 10 CS BT" ON A
SINGLE BLAZE BEARS N 52° E 1.7 FT.
11" DIA. D. FIR DOUBLE BLAZED AND SCRIBED "WC 1/4 S 15 CS BT"
BEARS S 40 1/2° E, 100.5 FT

Sketch of Monument, Accessories, and General Area



Location & Comments

W.C. CORNER LIES 95 FT
NORTHERLY OF COUNTY
ROAD CENTER LINE

Comp. Declin. 16 1/2° E
Agency DCSO
Party Chief RANDY SMITH
Notekeeper RANDY SMITH
Witnesses STEVE FLAUSK

Address

REGISTERED Surveyor's Seal
PROFESSIONAL
LAND SURVEYOR

Randall W. Smith

OREGON
JULY 25, 1990
RANDALL W. SMITH
2400

67/28-2

RENEWAL 6-30-2010