

RENEWAL

Monument Set (Procedure and Description)

Monument Detail

1924 BRASS CAP IS 0.5 WEST OF PLUMP. BC/IP NOT STRAIGHTENED AS IT FALLS ALONG SIDE A SMALL SEASONAL STREAM WITH WATER RUNNING A 1 1/2 FT DIA MOUND OF BROKEN CONCRETE IS SET AROUND BC/IP

N/A

New Accessories

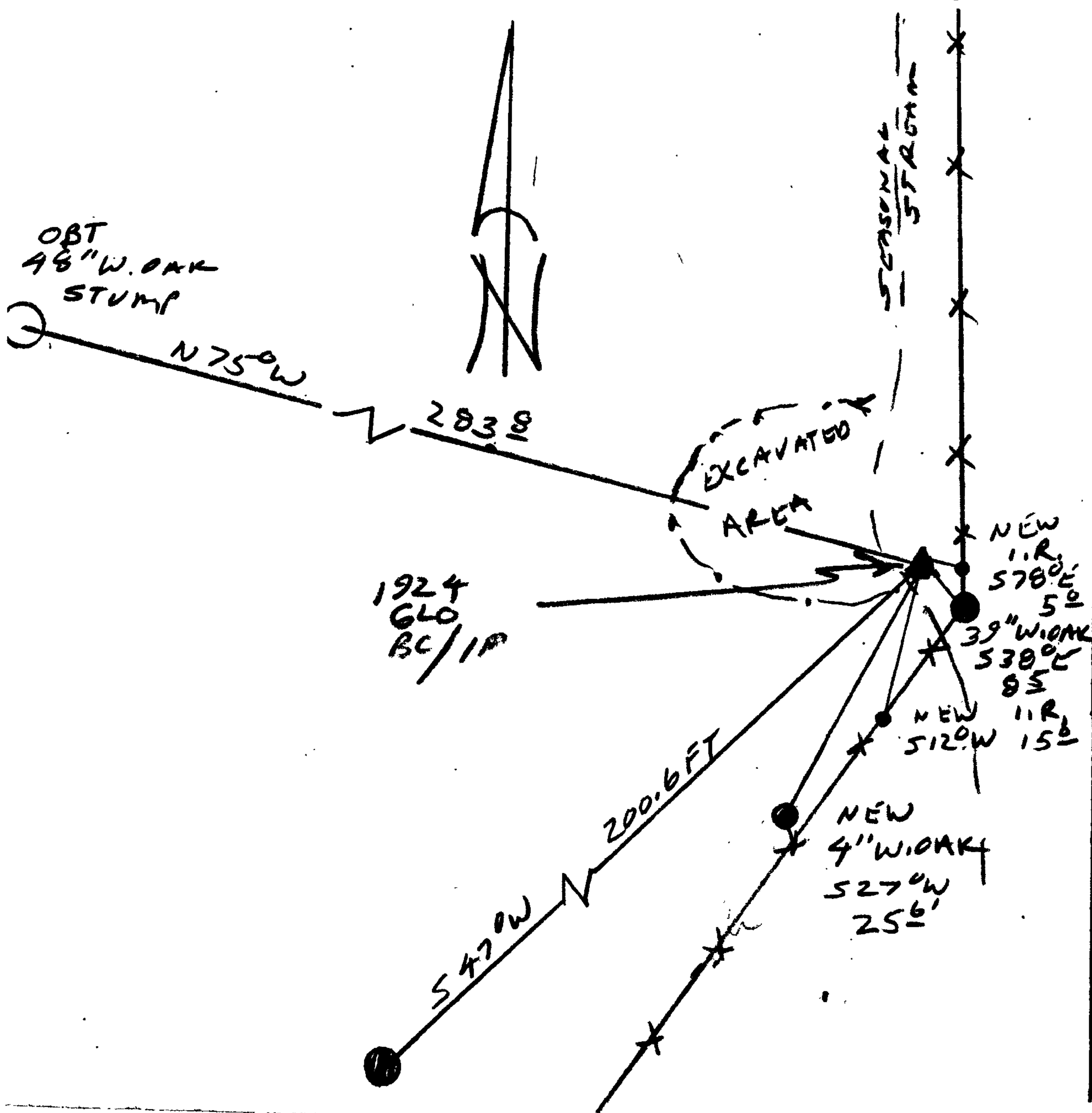
4" W. OAK DOUBLE BLAZED AND SCRIBED "X BT" BEARS S 27° W 25.6 FT

5/8" X 30" LONG IRON ROD WITH A DCSG ALUM CAP STAMPED "B01 2009" IS SET IN FENCE LINE BEARS S 78° E 5.0 FT

5/8" X 30" LONG IRON ROD WITH A DCSG ALUM CAP STAMPED "B02 2009" IS SET IN FENCE LINE BEARS S 12° W 15.0 FT

Sketch of Monument, Accessories, and General Area

Location & Comments



Location & Comments

Comp. Declin. 16 1/2° E

Agency DCSG

Party Chief RANDY SMITH

Notekeeper RANDY SMITH

Witnesses STEVE BLAUS

Address _____

Surveyor's Seal
REGISTERED
PROFESSIONAL
LAND SURVEYOR

Randall W. Smith

OREGON
 JULY 25, 1990
RANDALL W. SMITH
 2488

RENEWAL 6-30-2010