

GOVERNMENT CORNER RESTORATION FORM

FILED

Date: 9-22-2008 By: JC

Township 29S Range 9W Sec. 26 County DOUGLAS

This survey consists of:

State OREGON Date SEPT 8, 2008

No. 540200

Map: Narrative: Corner Rpt: CS 67/25-67

Corner Designation

1/4 526 / 535

DOUGLAS COUNTY

Condition Report Only

Not Found

✓ Renewed

Unrecorded

Surveyed In

Referenced Out

Previous Renewals DCSD 1920, CROWDER 1951, DCSD 1957

MONUMENT DETAIL

Monument(s) Found: (Condition and Source)

BLM 1966

1966 BLM 3 1/4 INCH DIAM. BRASS CAP (MARKED AS AT RIGHT) ON A 2 1/2 INCH OD, I.P. SET 10 INCHES BELOW SURFACE OF GRAVEL DRIVEWAY ENTRANCE. THIS MONUMENT HAS A 1/2 INCH DIAM. IRON ROD SET WITH ITS TOP 2 INCHES BELOW SURFACE ON THE NORTH AND SOUTH EDGE.

U.S. BUR. OF LAND MANAGEMENT

T 29 S

R 9 W

1/4 526

535

1966

Accessories Found:

NO ORT'S FOUND. NO 1920 DCSD BT'S FOUND. ONE 1951 CROWDER BT FOUND IN 18" NOW 32" W. OAK FHSB BEARS N 62 1/2° W, 123° FT (RECORD N 59 1/2° W, 123° FT.) NO 1957 DCSD BT'S FOUND. TWO 1966 BLM BT'S FOUND A 13" NOW 17" W. OAK (WE LOOK FOR SCRIBING FIND NONE, THIS TREE PROBABLY NOT 1957 BYRON BT) BEARS N 63° E 17° FT (AS PER BLM RECORD) AND AN 8" FIR NOW 26" DIA, 4 FT TALL STUMP WITH FHSB BEARS S 41 3/4° W 29 1/2° FT (AS PER RECORD)

A 1" DIA. BOLT 8" BELOW GROUND BEARS S 4° E 1.75 FT

C.S. File No 67/25-67

RENEWAL

Monument Set (Procedure and Description)

Monument Detail

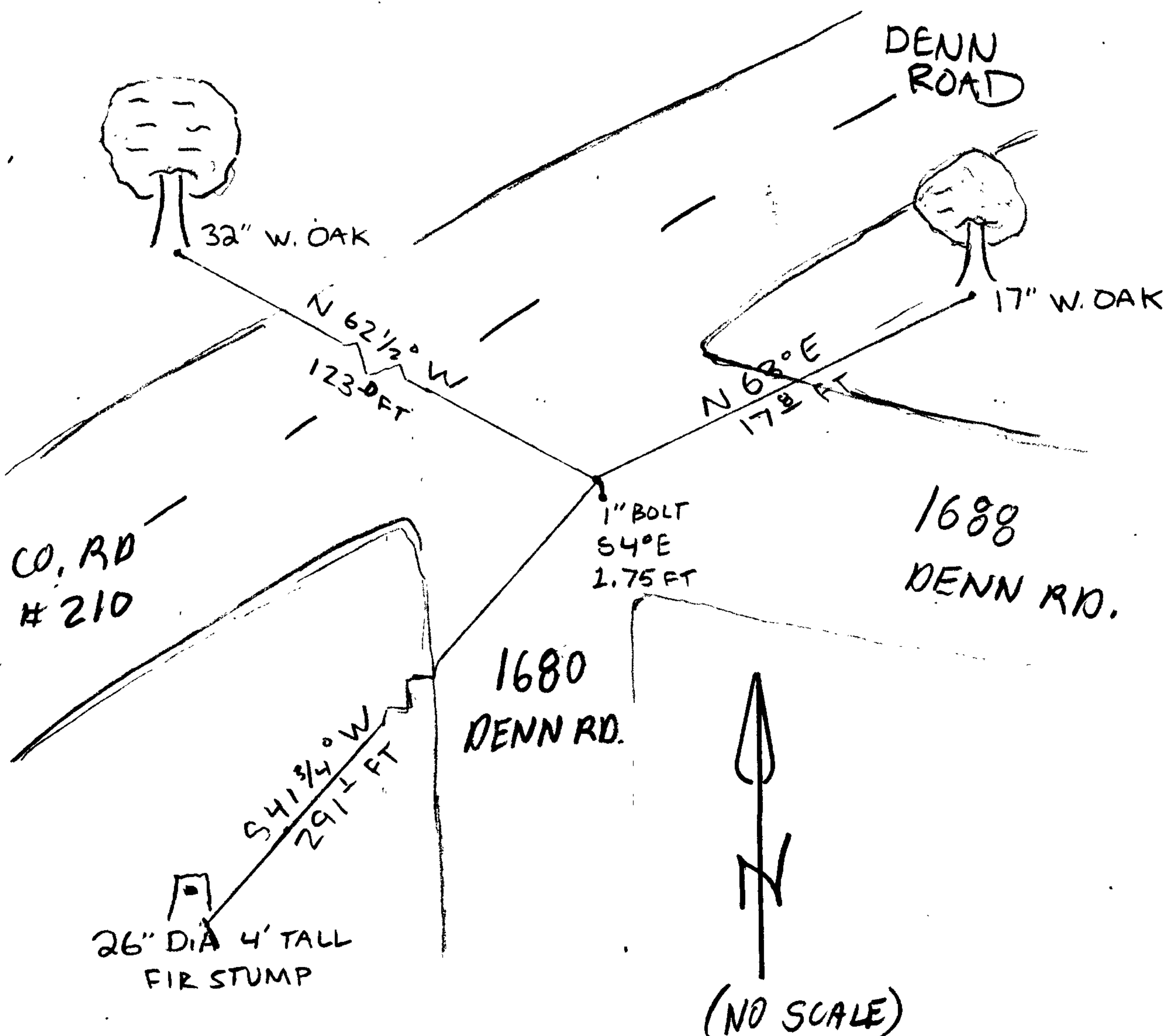
N/A

N/A

New Accessories

17" RLM W.OAK NOW SCRIBED "1/4S26CS BT" ON DOUBLE BLAZE BEARS N63°E
17² FT (AS PER RECORD)

Sketch of Monument, Accessories, and General Area



Location & Comments

MONUMENT IS AT DOUBLE DRIVEWAY
ENTRANCE NEAR SOUTH EDGE
OF DENN ROAD

Comp. Declin.

Agency DOUGLAS COUNTY SURVEYORS ASSOCIATION

Party Chief STEPHEN FLAUSE

Notekeeper KODY INDA

Witnesses *Stephen John Flause*

Address

Surveyor's Seal