

GOVERNMENT CORNER RESTORATION FORM

FILED

Township 28S Range 05W Sec. 13

County DOUGLAS Date: 8/22/08 By: XC

State OREGON Date JULY 21, 2008

No. _____ Map: _____

Corner Designation

Narrative: _____
Corner Rpt: 67/25-65

1/4
S14 | S13

DOUGLAS COUNTY
Condition Report Only
SURVEYOR

- Not Found
- Renewed
- Unrecorded
- Surveyed In
- Referenced Out

Previous Renewals MARKHAM 1953

MONUMENT DETAIL

Monument(s) Found: (Condition and Source)
1" x 66" I.P. WITH STEEL PLATE SIGN AT TOP
MARKED "1/4 S13/14" FOUND LOOSE ON
GROUND. SIGN MEASURES 9 1/2" x 5" AND IS
ERRONEOUSLY MARKED AS AT RIGHT.

1/4 S 13/14

Accessories Found: ONE OBT FOUND INTACT A
10" NOW 23" ROTTED CEDAR SNAG, 35 FT. TALL, WITH EVIDENCE
OF PREVIOUSLY OPENED BLAZE, BEARS S 31° E, 2.7 FT (PER RECORD)
38" LAUREL NOW A ROTTED AND BROKEN STUMP BEARS S 70° W, 130 FT (PER RECORD)

24" FIR OBT NOW 30" FALLEN STUMP; CENTER OF ROOTHOLE IS REASONABLE
WITH ORIGINAL BEARING AND DISTANCE.

NW MARKHAM LAUREL NOW A ROOTHOLE NEAR RECORD BEARING AND DIST.

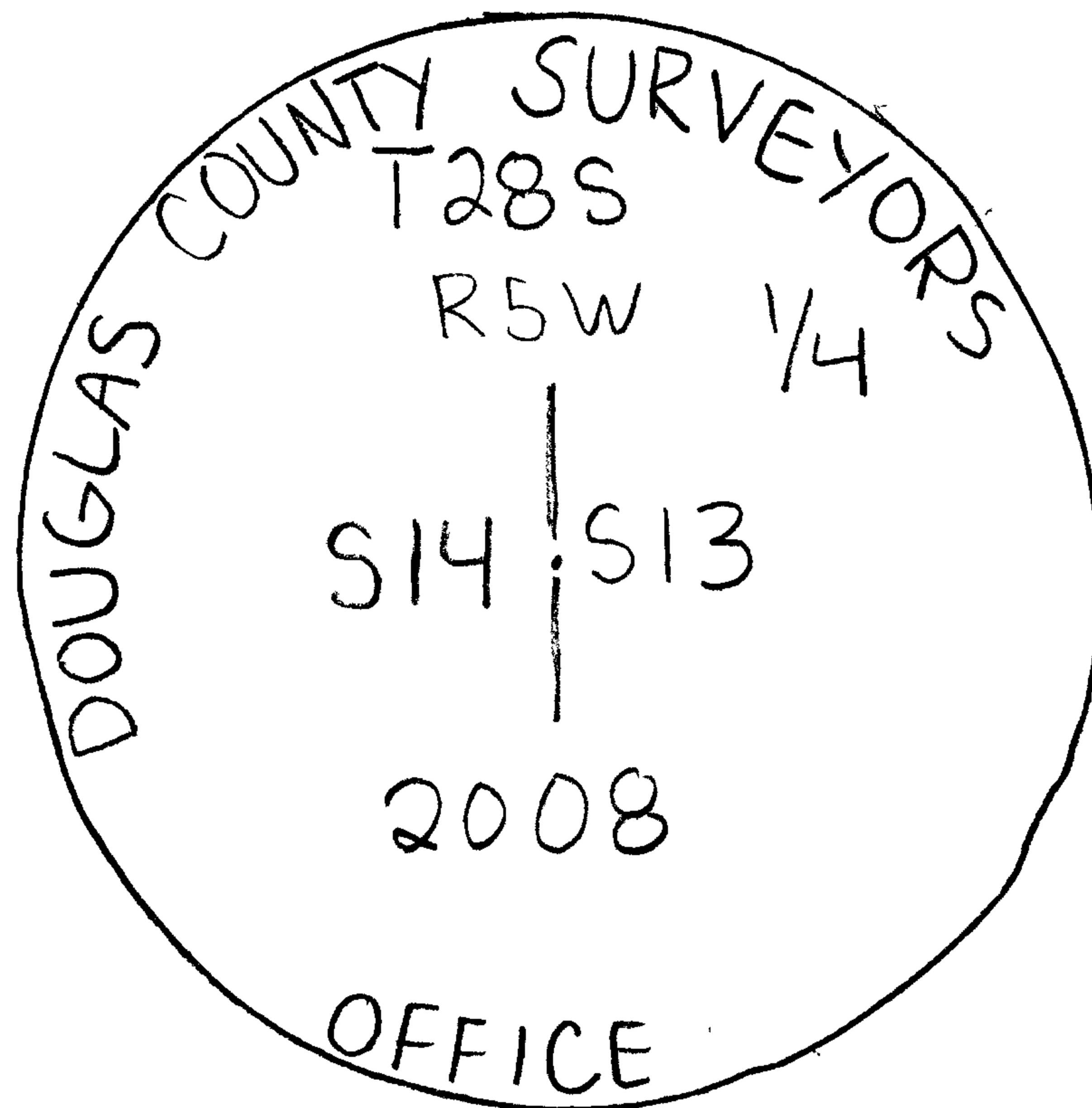
NO EXISTING FENCE COR. FOUND NORTH 130 FEET. CALL TO RIDGE-TOP
TO WEST IS REASONABLE.

RENEWAL

Monument Set (Procedure and Description)

1 IN. OD.I.P, 2 3/8 IN BRASS CAP (MARKED AS AT RIGHT) FIRMLY SET, PROTRUDING 8 INCHES ABOVE GROUND.

Monument Detail



New Accessories

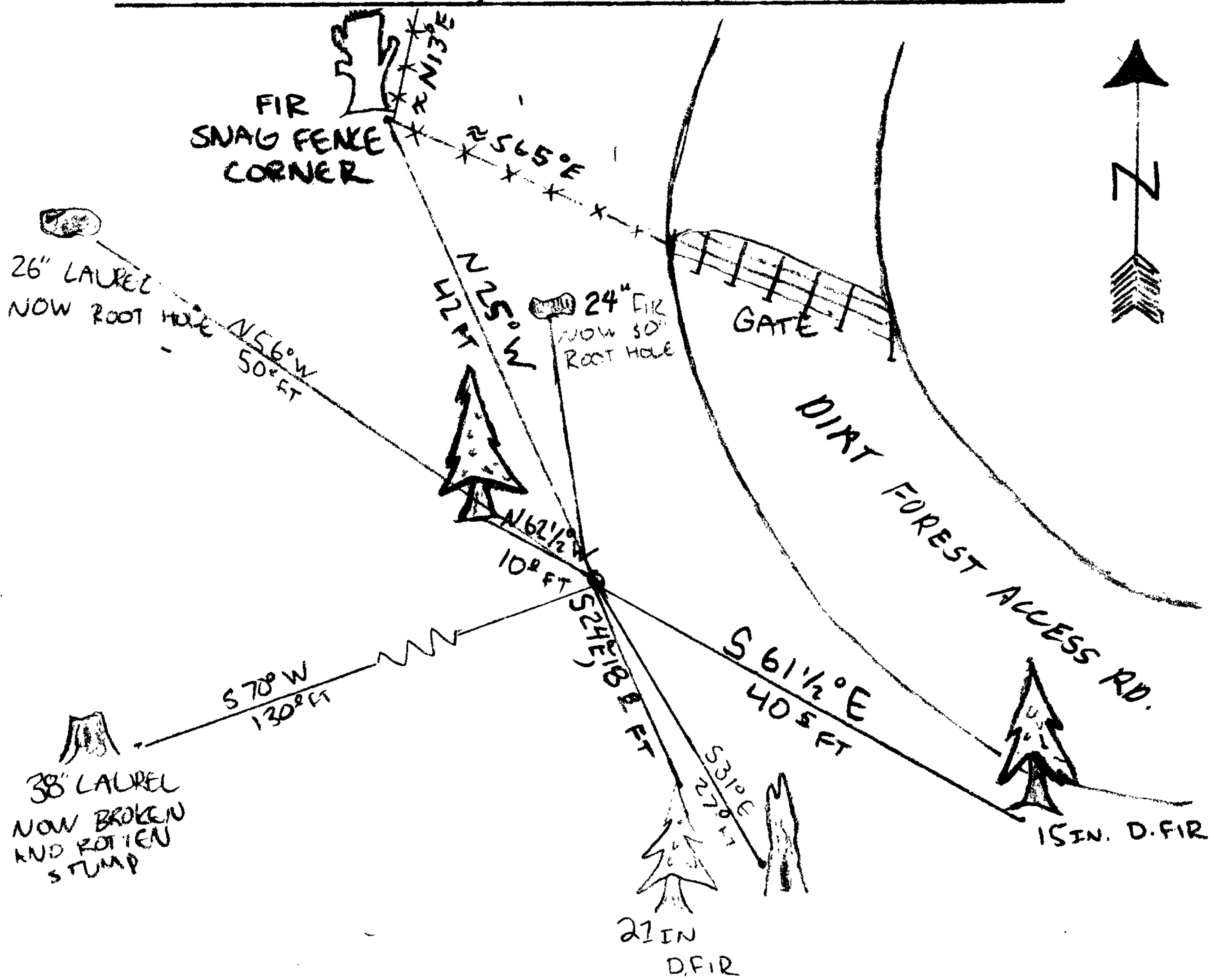
15 IN. D.FIR BEARS S 61 1/2° E, 40 2 FT; SCRIBED "1/4 S13 CS 13T" ON A DOUBLE BLAZE.

21 IN. D.FIR BEARS S 24° E, 18 2 FT; SCRIBED "1/4 S13 CS 13T" ON A DOUBLE BLAZE.

18 IN D.FIR BEARS N 62 1/2° W 10 2 FT; SCRIBED "1/4 S14 CS 13T" ON A DOUBLE BLAZE.

MONUMENT DESCRIBED IN 1963 RENEWAL SET 1 2 FT, WEST FROM BRASS CAP AND STANDS 4 1/2 FT TALL

Sketch of Monument, Accessories, and General Area



Location & Comments

CORNER IS IN OPEN MIXED FOREST, ON GENTLE EAST SLOPE.

Comp. Declin. 16 1/4° E

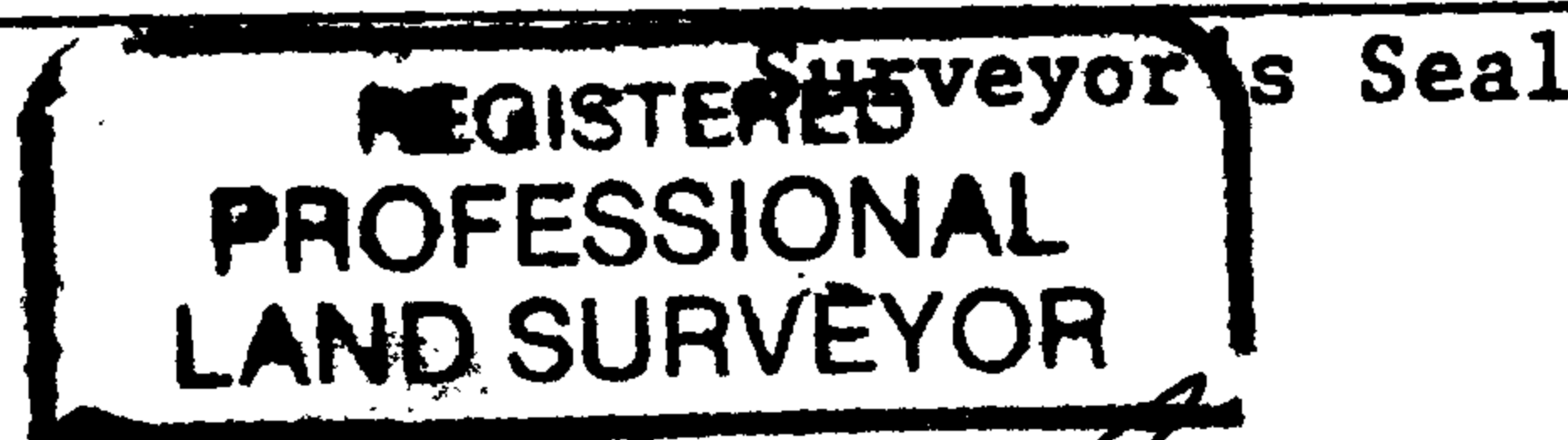
Agency D.C.S.O

Party Chief STEPHEN J. FLAUSE

Notekeeper KODY INDA

Witnesses *Stephen John Flause*

Address



By me or my agent RENEWAL 6-30-10

