

GOVERNMENT CORNER RESTORATION FORM

Date: 7/24/2008 By: JC

Township 28S Range 5W Sec. 12

County DOUGLAS This survey consists of:

State OR

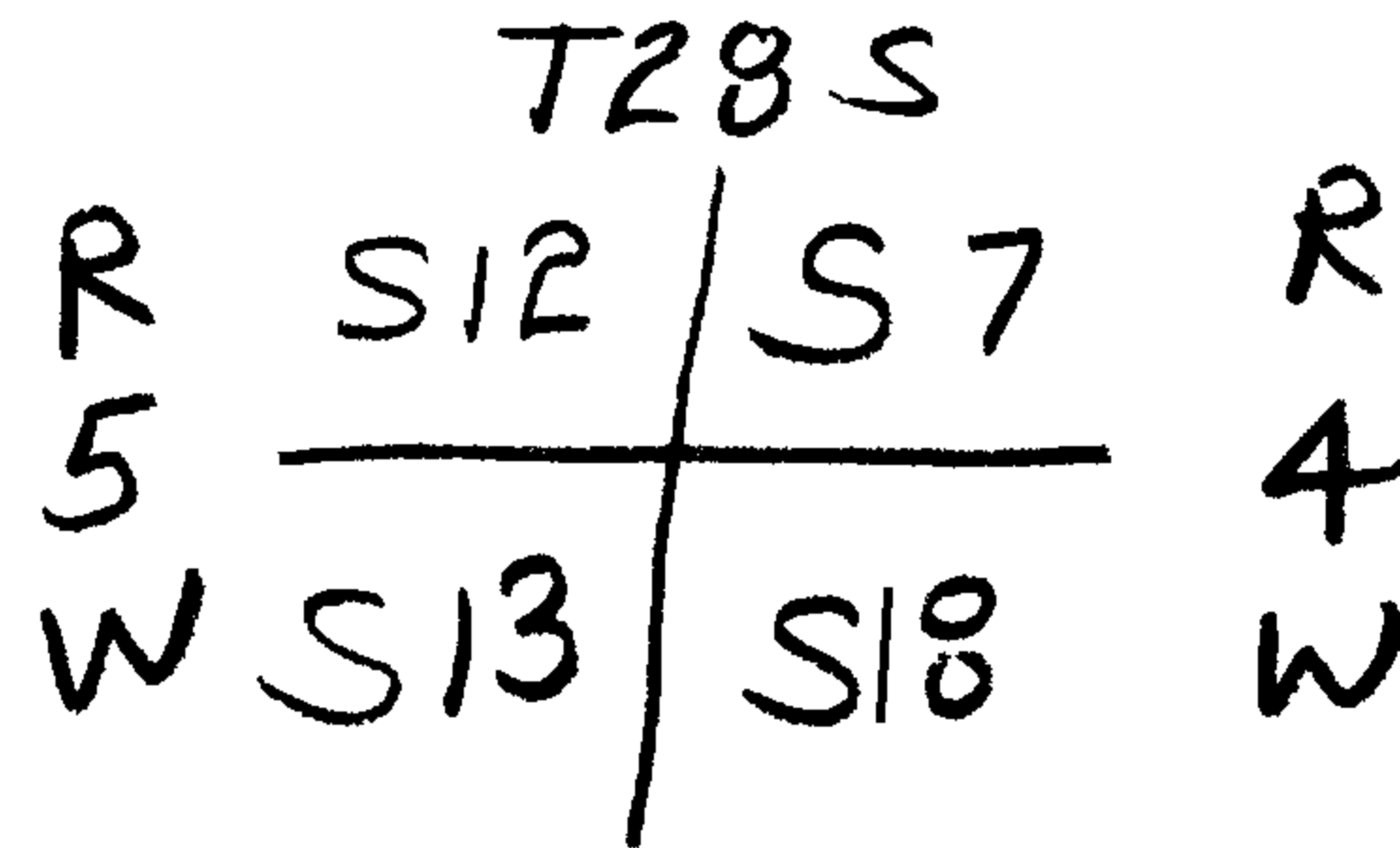
Date 7-16-08

No. 700500

Map: _____

Narrative: _____

Corner Designation



Corner Rpt: 67/25-63
4 PGS

DOUGLAS COUNTY

Condition: Surveyed Only

Not Found

Renewed

Unrecorded

Surveyed In

Referenced Out

Previous Renewals 1957, 1961 + 1967 DCSO ; 1974 BLM

MONUMENT DETAIL

Monument(s) Found: (Condition and Source)

DCSO WIT. COR NOT FOUND

1974 BLM W.C. 3/4" BRASS CAP ON A
2 1/2" O.D. I.P. PROTRUDES 5"
OUT OF A LOOSE CIRCLE OF STONES

1974 BLM RM 3/4" BRASS CAP ON A
1/2" O.D. I.P.

US DEPT. OF THE INTERIOR
WC
T 28S
R5W | S12 | S7 | R4W
S13 | S18
1974
BUR. OF LAND MANAGEMENT

POSITION OF BLM MONUMENTS ARE
QUESTIONABLE. THEY HAVE A POOR
RELATIONSHIP WITH EACH OTHER
AND DON'T FIT WELL WITH THE
1/4 BETWEEN S13/S18. NEITHER
IS USED TO CALCULATE THE CORNER
POSITION

Accessories Found:

CALCULATED CORNER POSITION:

- 45" DIA 4 FT HIGH ROTTED D. FIR STUMP WITH AXE MARKS
BEARS S 33° E, 44.2 FT OBT
- 6" NOW 23" DIA D. FIR WE OPEN AND FIND PORTION OF
50 YEAR OLD BLAZE WITH ILLEGIBLE SCRIBE MARKS
BEARS N 88 1/4° W, 138.8 FT (1957 REC N 84 1/2° W 138.8 FT)
- BLM BC/IP WIT. COR BEARS S 3 1/2° E, 56.33 FT
1974 (REC. 50° 04' E, 20.46 FT.)
- BLM BC/IP REF-MON. BEARS S 71° E 39.13 FT
- 11" NOW 23" DIA NEARLY DEAD D. FIR WE OPEN AND FIND
1974 BLAZE WITH ILLEGIBLE SCRIBING BEARS
S 83 1/2° W 135.5 FT. FROM BLM WIT. COR THIS BT
BEARS N 73 1/2° W 143.9 FT (REC. N 72 1/2° W 143.9 FT)
THIS BT'S POSITION SUGGESTS THAT BLM WIT. COR HAS NOT MOVED SINCE 1974

NOTE REC BRG + DIST BETWEEN BLM BC/IP IS
N 38 1/2° E, 59.4 FT WE FIND BC/IP RELATIONSHIP
IS N 38° E, 59.8 FT.

C.S. File No 67/25-63

RENEWAL

Monument Detail

Monument Set (Procedure and Description)

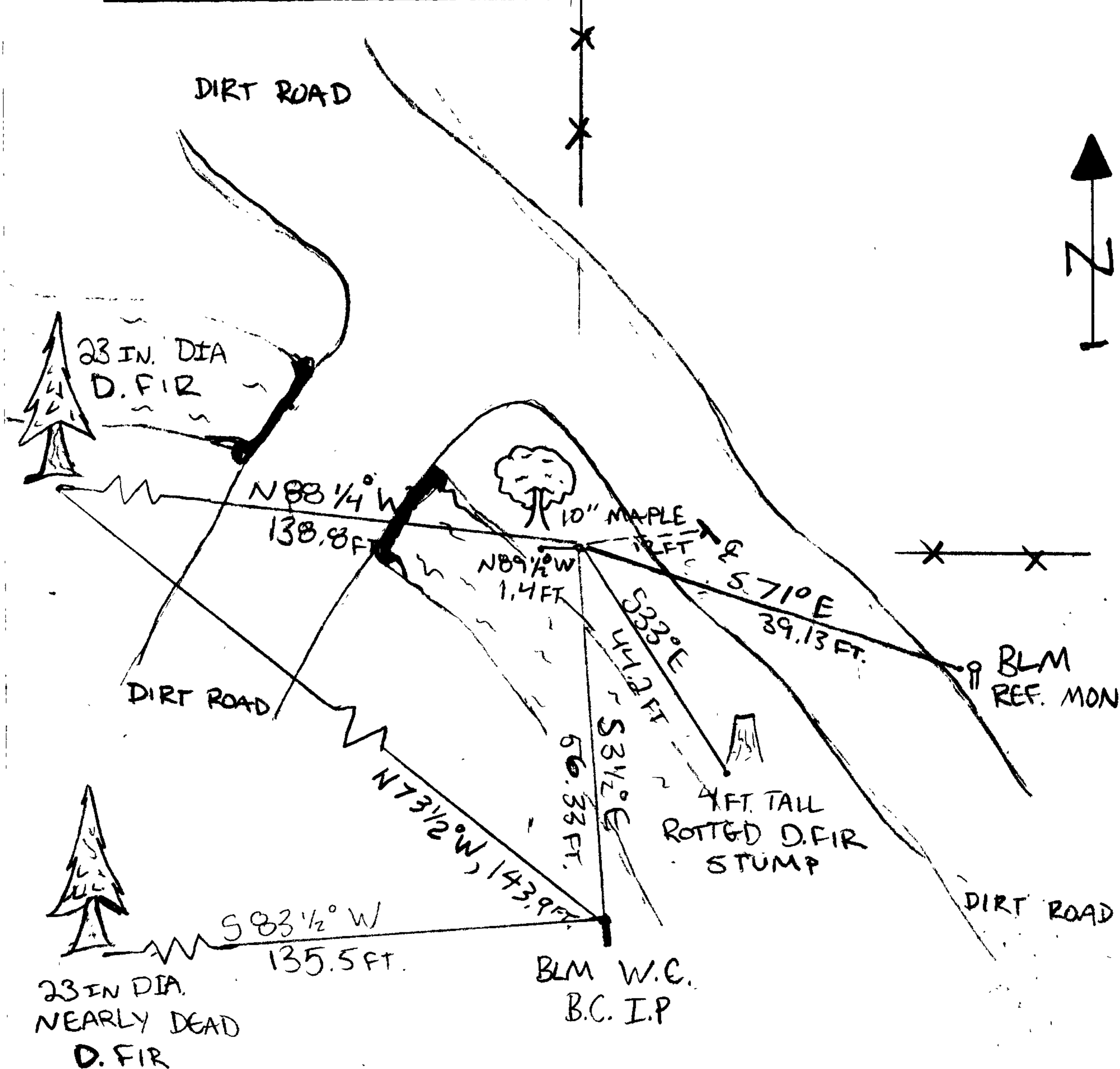
5/8" BY 60" LONG IRON ROD
 WITH DCSO ALUM. CAP
 IS SET AT POSITION DETERMINED
 BY DISTANCE - DISTANCE INTERSECT
 FROM 1. REMAINING OBT STUMP
 AND 1957 DCSO BT. DISTANCE
 TO 1957 BT IS PER 1957 RENEWAL.
 THIS SOLUTION AGREES WELL WITH
 REC. BEARING AND DISTANCE TO THE
 OBT, POOR BEARING TO 1957 BT
 BUT GOOD DISTANCE. CORNER POSITION
 LINES UP WELL WITH OLD FENCE
 LINES RUNNING NORTH AND EAST.
 (NOTE CORNER WAS AT A FENCE
 CORNER IN 1957) 1/2" PROTRUSION
 9" OUT OF GROUND.

12 | 7
 13 | 18
 2008

New Accessories

10" MAPLE DOUBLE BLAZED AND SCRIBED "SIRCS BT"
 BEARS N89 1/2° W, 1.4 FT.

Sketch of Monument, Accessories, and General Area



Location & Comments

1/4 COR OF SO⁹4W
 2591.44 FT BLM 1974
 RECORD S0°04'E 2583.2 FT

SEE NARRATIVE

Comp. Declin. 16 1/4° E
 Agency DCSO
 Party Chief STEPHEN J FLAUSCH
 Notekeeper
 Witnesses KODY INDA
 CALCULATIONS
 RANDY SMITH

Address

Surveyor's Seal

REGISTERED
 PROFESSIONAL
 LAND SURVEYOR

Randall W. Smith
 RENEWAL 6-30-2010

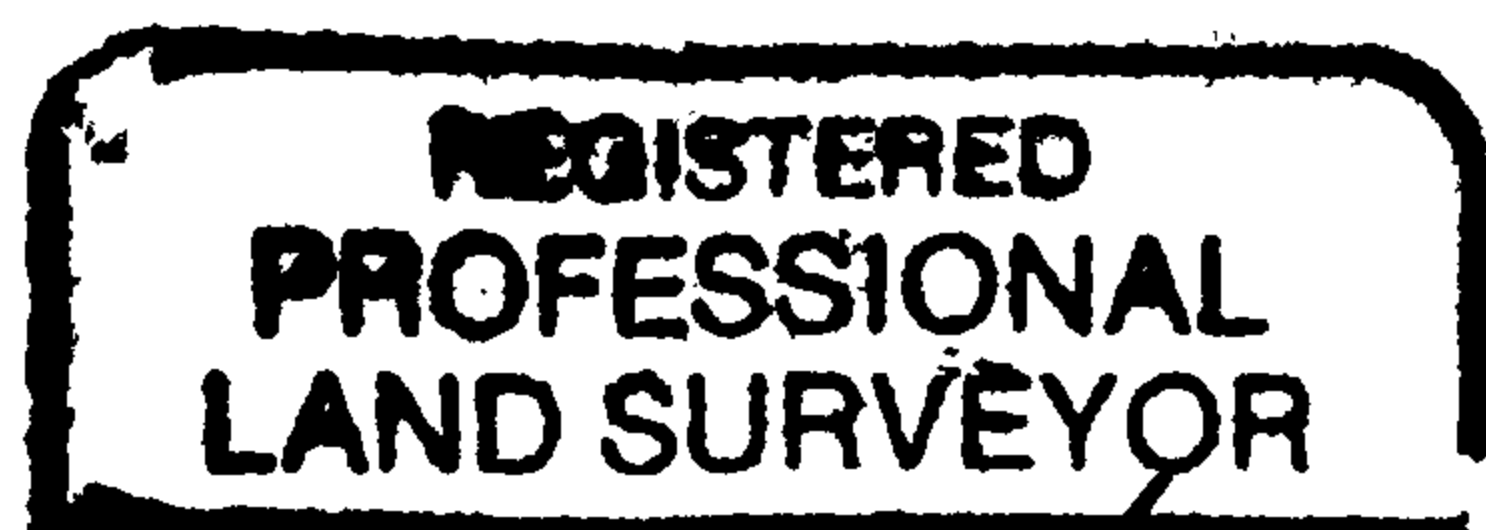
OREGON
 JULY 25, 1990
 RANDALL W. SMITH
 2489

NARRATIVE

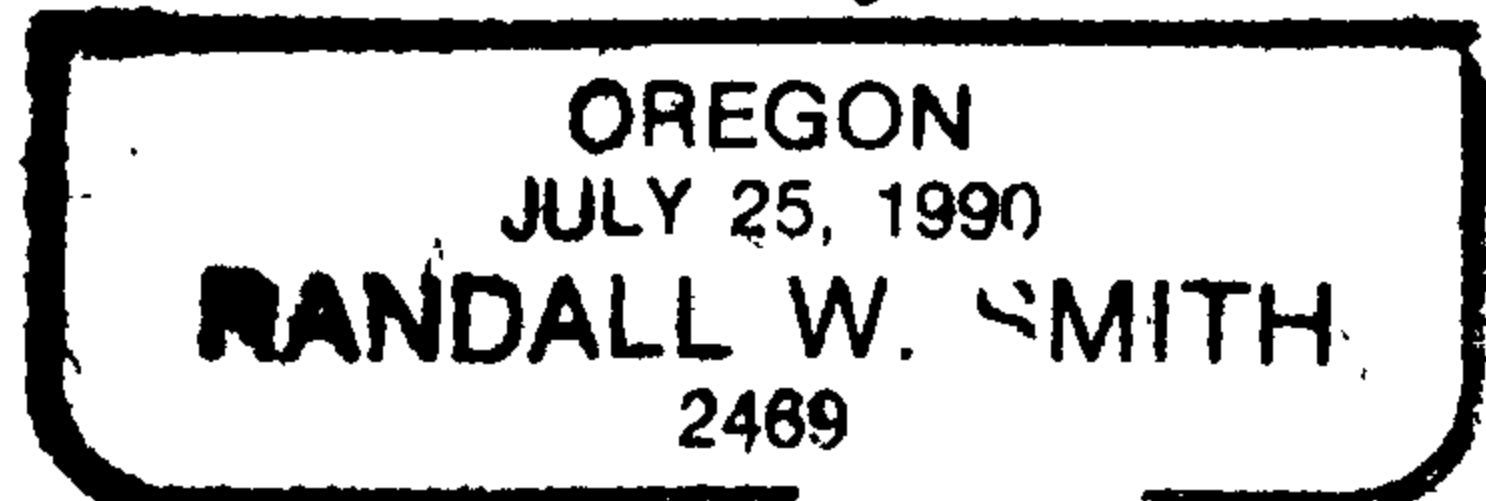
The south east corner of Section 12, Township 28 South, Range 5 West W.M. in Douglas County Oregon was reestablished on July 16, 2008. Numerous solutions were examined. After careful analyses the corner was set at record distance-distance intersect from one original bearing tree and one 1957 DCSO renewal bearing tree. This position fits well with intersecting old portion of north and east running fence lines, record bearing and distance to original bearing tree and record distance to the 1957 DCSO bearing tree.

A thorough historical examination of this corner was under taken by my self while analyzing the errors and problems created and perpetuated through the renewals of this corner since 1957. I believe that the corner was properly set in 1957 from one remaining original bearing tree (see signed statement by Milton in CS file 49/21), fence corner and an unrecorded monument that were in agreement. The NW renewal bearing tree bearing was in all likelihood written down or taken in error. I believe that the bearing to the 1957 fir bearing tree should be N87 ½°W, 138.8 ft. (1957 rec. N84 ½°W, 138.8). Note that in 1967 DCSO renewal the 1957 brass cap/ iron pipe was found out of ground and the corner was calculated using the errant bearing and a distance of N84 ½°W, 136.8 ft. The DCSO W.C. set in 1967 would reflect a corner position of approximately 7 ¼ feet south of its original position, this errant corner position was also used by the BLM in 1974. In 1974 the BLM set two monuments that have multiple problems and do not agree with each other. They were not used in the calculation of this corner.

Calculations: Randy Smith
Field crew: Stephen Flause and Kody Inda



Randy W. Smith



RENEWAL 6-30-2010

FROM CALC. CORNER
 1/4 CORNER BEARS
 S0°04'W 2591.44'
 1974 BLM RECORD
 S0°04'E 2583.9

