

GOVERNMENT CORNER RESTORATION FORM

FILED

Date: 6/17/2008 By: JC

This survey consists of:

Township 26 S Range 3 W Sec. 35 County DOUGLAS Map:

State OREGON Date MARCH 2008 No. 520100

Narrative: Corner Rpt: 67/25-54

Corner Designation

DOUGLAS COUNTY SURVEYOR

Condition Report Only

Not Found

Renewed

Unrecorded

Surveyed In

Referenced Out

Previous Renewals BLM 1981 RESURVEY

MONUMENT DETAIL

Monument(s) Found: (Condition and Source)

U.S. CADASTRAL SURVEY

A 3/4 INCH DIAMETER BLM BRASS CAP MARKED AS AT RIGHT ON A 2 1/2 INCH OUTSIDE DIAMETER IRON PIPE IS FIRMLY SET WITH TOP LEANING APPROX. 1 3/4 FEET SOUTHWESTERLY FROM PLUMB. TOP OF MONUMENT IS APPROX. 10 INCHES OUT OF GROUND AND STEM PROTRUDES FROM TRAIL. MONUMENT PROBABLY DISTURBED BY PASSING ATV'S.

W 1/16 S 35 52

1958

BUREAU OF LAND MANAGEMENT

Accessories Found:

ACCESSORIES MEASURED FROM PLUMB. POSITION OF MON.

ONE 1958 ORIGINAL BT FOUND.

A PINE, 18 INS. DIAM, NOW A 30 INCH D.B.H. PONDEROSA PINE, WITH A FULLY HEALED DOUBLE BLAZE, BEARS N20°E, 120.8 FEET DISTANT (AS PER 1958 RECORD FOR BEARING AND DISTANCE; DOES NOT AGREE WITH 1981 BEARING)

NO EVIDENCE OF SE TWIN OAK; AREA WAS CLEARED FOR FIREWOOD.

C.S. File No 67/25-54

RENEWAL

Monument Detail

Monument Set (Procedure and Description)

PLUMB POSITION OF FOUND B.C. MONUMENT IS REFERENCED OUT. MONUMENT REMOVED AND HOLE DEEPENED. MONUMENT IS REESTABLISHED AT THE REFERENCED OUT PLUMB POSITION AND IS NOW FIRMLY AND PLUMBLY SET PROTRUDING APPROX. 1 INCH ABOVE GROUND.

N/A

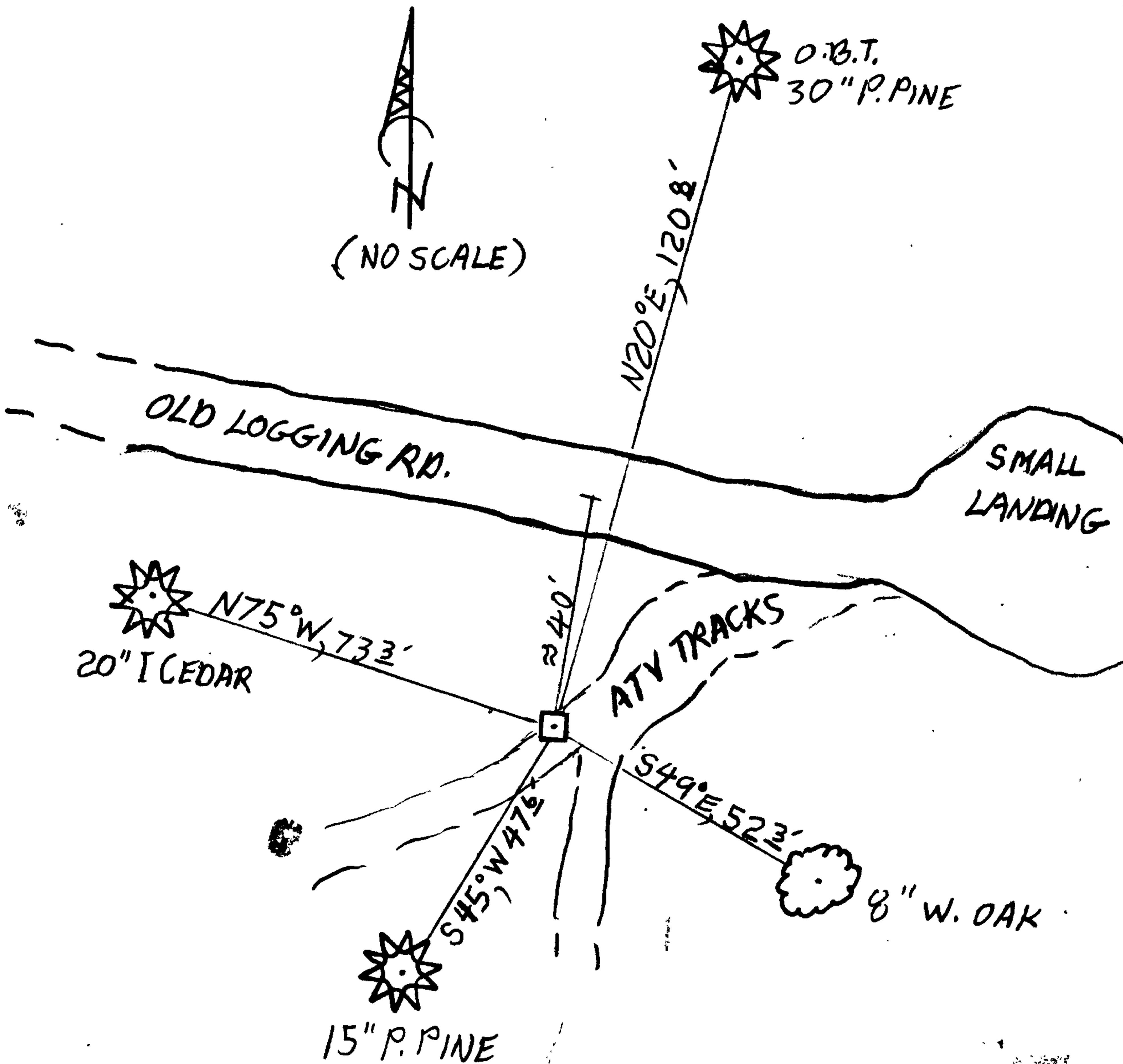
New Accessories

AN 8" D.B.H. WHITE OAK DOUBLE BLAZED AND SCRIBED "W 1/16 S2 CS BT" BEARS S49°E, 52.3 FEET DISTANT.

A 15" D.B.H. PONDEROSA PINE DOUBLE BLAZED AND SCRIBED "W 1/16 S2 CS BT" BEARS S45°W, 47.6 FEET DISTANT.

A 20" D.B.H. INCENSE CEDAR DOUBLE BLAZED AND SCRIBED "W 1/16 S35 CS BT" BEARS N75°W, 73.3 FEET DISTANT.

Sketch of Monument, Accessories, and General Area



Location & Comments

MONUMENT IS ON SPARSELY FORESTED S-W SLOPE APPROXIMATELY 300 FEET NORTH FROM THUNDER MOUNTAIN RD. (BLM ROAD 342)

Comp. Declin. 16'14" E

Agency DCSD

Party Chief STEPHEN JOHN FLAUSE

Notekeeper Stephen John Flause

Witnesses KODY D. INDA

Address

Surveyor's Seal

REGISTERED PROFESSIONAL LAND SURVEYOR

Randall W. Smith  
RENEWAL 6-30-08

OREGON  
JULY 25, 1990  
RANDALL W. SMITH  
2480