

FILED

GOVERNMENT CORNER RESTORATION FORM

Date: 5/19/2008 By: LC

Township 27S Range 5W Sec. _____

County DOUGLAS

This survey consists of:

State OR

Date APRIL 28, 2008

No. 045050

Narrative: _____

Corner Rpt: 67/25-46

Corner Designation

NW COR DLC 46

DOUGLAS COUNTY

SURVEYOR

Condition Report Only

Not Found

Renewed

Unrecorded

Surveyed In

Referenced Out

MONUMENT DETAIL

Previous Renewals 1935, 1968

Monument(s) Found: (Condition and Source)

MONUMENT WAS REFERENCED OUT
IN FALL OF 2004 DUE TO STREET
IMPROVEMENTS.

Accessories Found:

NO PREVIOUS ACCESSORIES REMAINING.

C.S. File No 67/25-46

RENEWAL

737 712

Monument Detail

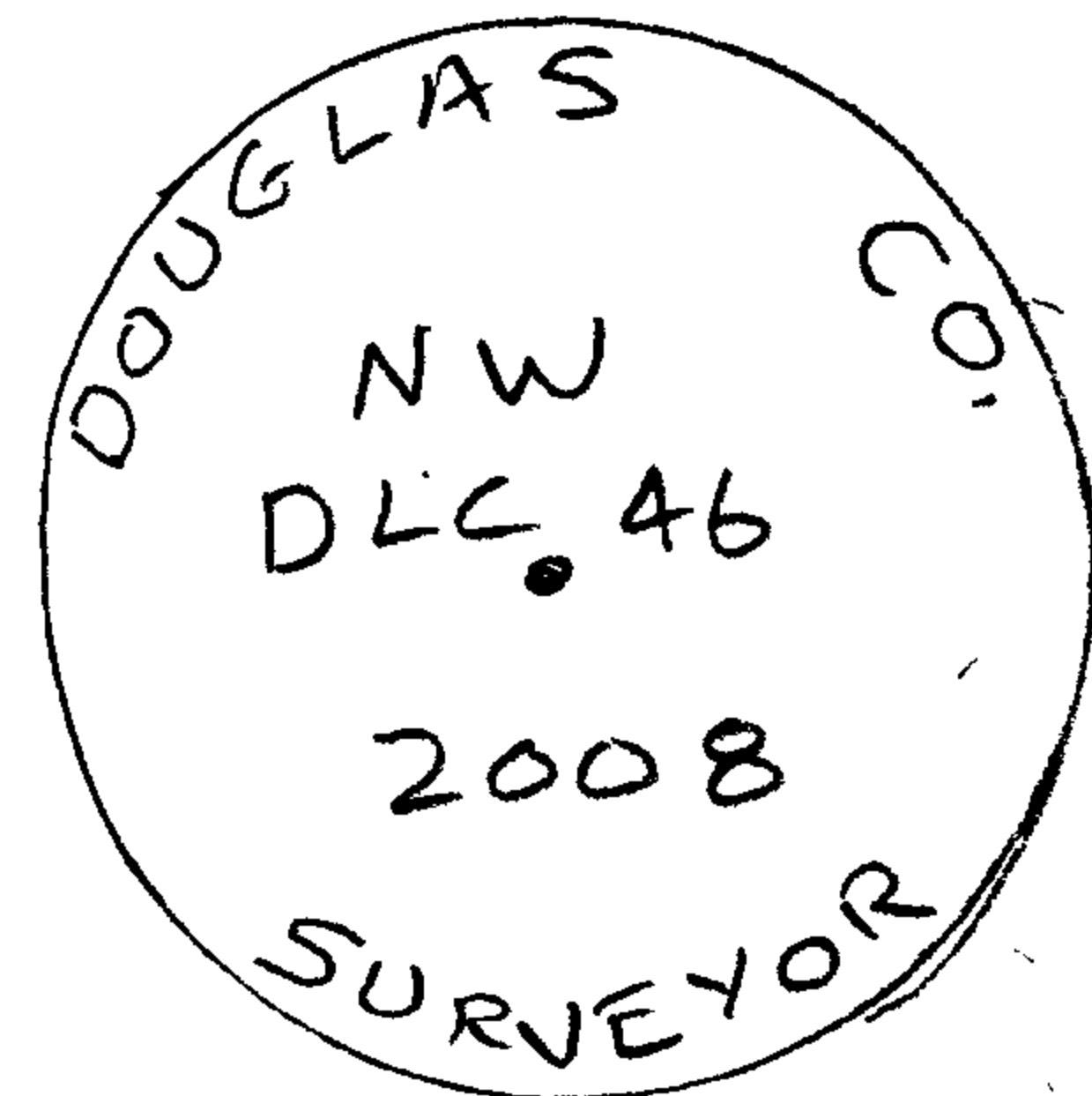
Monument Set (Procedure and Description)

D.C.S.O. REFERENCED OUT D.L.C. MONUMENT BUT OUR REF. POINTS WERE SCRAPED OUT BY ROAD MAINTENANCE ON DOUGLAS AVE.

D.L.C. MONUMENT WAS TIED BY A.A. SURVEYING IN 2004 WHEN SURVEYING SOMERSET CT. SUBD. (VOL 21 PG. 45). SUBSEQUENT CONSTRUCTION DESTROYED SAID MONUMENT. DATA WAS OBTAINED FROM A.A. SURVEYING SHOWING THE RELATIONSHIP OF D.L.C. CORNER TO CERTAIN LOT CORNERS OF SAID VOL. 21 PG. 45. CORNER WAS RE-ESTABLISHED USING THEIR DATA.

AT CORNER POINT SET 5/8" x 30" IRON ROD WITH 1/2" DIA. ALUM. CAP MKD "DOUGLAS CO. SURVEYOR NW DLC 46 2008" PROJECTS 1" ABOVE GROUND.

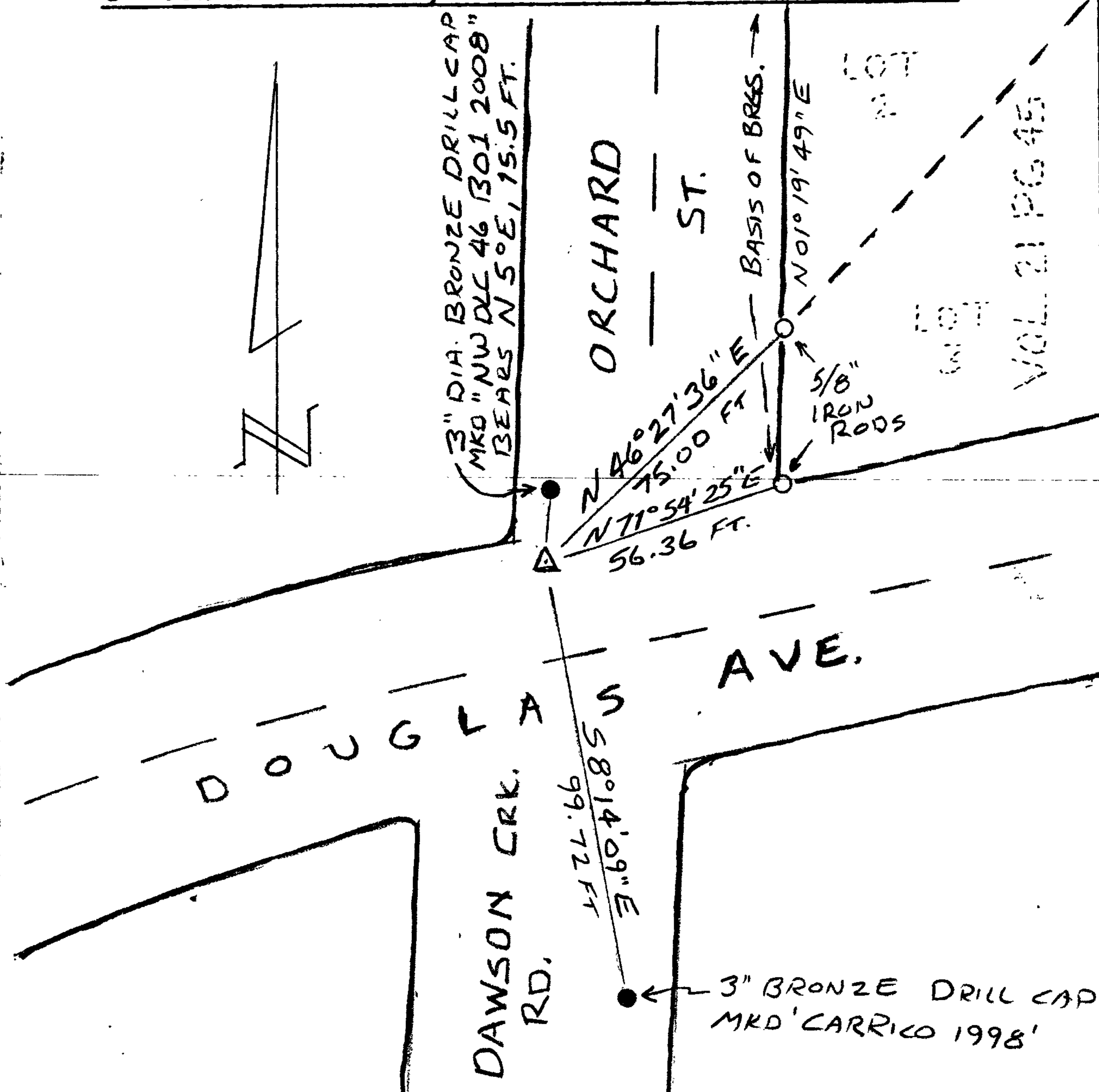
NOTE: MON. MAY AGAIN BE DESTROYED DUE TO FUTURE SIDEWALK DEVELOPMENT.



New Accessories

- 3" DIA. BRONZE DRILL CAP STAMPED "DOUGLAS CO. SURVEYORS OFFICE NW DLC 46 B012008" BEARS N 5° E, 15.5 FT.
- 3" DIA. BRONZE DRILL CAP STAMPED "CARRICO 1998" SET NE CORNER OF BRIDGE BEARS S 8° 14' 09" E, 99.72 FT.
- 5/8" DIA. I.R. W/PLASTIC CAP MKD. "AA SURVEYING" AT SW COR LOT 3, VOL 21 PG 45A BEARS N 71° 54' 25" E, 56.36 FT.
- 5/8" DIA. I.R. - NO CAP AT MOST SOUTHERLY CORNER LOT 2, VOL 21 PG 45A BEARS N 46° 27' 36" E 75.00 FT. NOTE: BEARINGS & DISTANCES TO NEW ACCESSORIES ARE BASED ON VOL. 21 PG. 45

Sketch of Monument, Accessories, and General Area



CORNER LIES NEAR NW CORNER OF INTERSECTION DOUGLAS AVE. ORCHARD ST. AND DAWSON CREEK RD.

Comp. Declin. 16 1/4° E
Agency D.C.S.O.
Party Chief S. FLAUSE
Notekeeper J. PIKE
Witnesses

Address

Surveyor's Seal

REGISTERED PROFESSIONAL LAND SURVEYOR

Randall W. Smith
RENEWAL 6-30-08

OREGON
JULY 25, 1990
RANDALL W. SMITH
2499